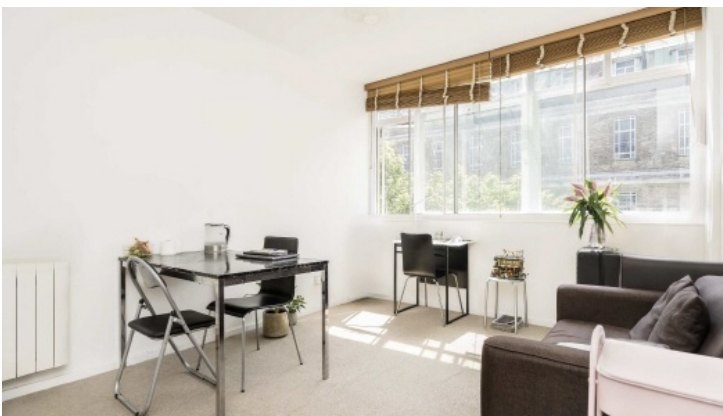


Frank Harris & Co.



Clare Court, WC1H

£2,800 pcm

A well-presented two bedroom apartment in this portered Art Deco style block a short walk from Russell Sq. Station. Features include two double bedrooms, open plan Kitchen/reception & modern kitchen & bathroom.

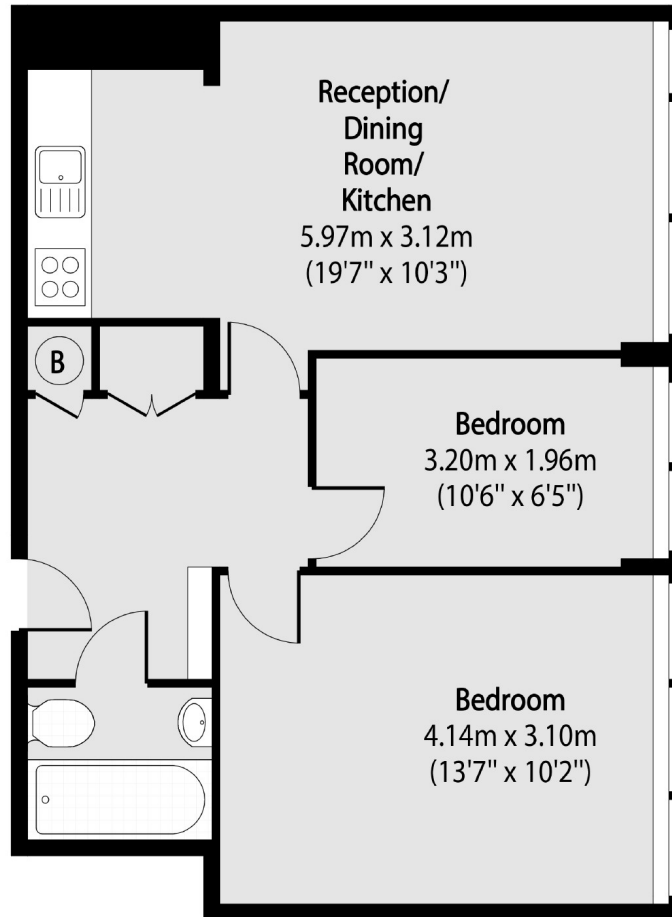


Clare Court is located only 0.1 mile to the large Waitrose, selection of shops, restaurants, and cinema of the Brunswick Centre. It's 0.3 miles to both King's Cross Station and Russell Square Station.

- Two double-bedrooms • Porter • 4th floor with lift •
- Built-in storage • Modern kitchen • Furnished •



Frank Harris & Co.



Total area (approx): 47.85 sq m (515 sq. ft)

Frank Harris & Co. Bloomsbury and Kings Cross

81 Marchmont Street,

London, WC1N 1AL

020 7387 0077

bloomsburylettings@frankharris.co.uk

Energy Rating: C. We aim to make our particulars both accurate and reliable. However they are not guaranteed; nor do they form part of an offer or contract. If you require clarification on any points then please contact us, especially if you're traveling some distance to view. Please note that appliances and heating systems have not been tested and therefore no warranties can be given as to their good working order.

