



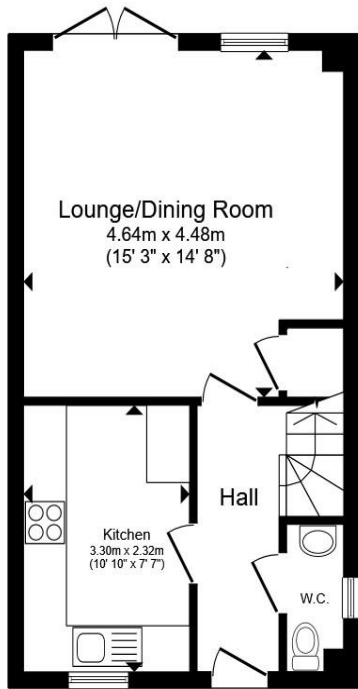
Bunting Close,HEMEL HEMPSTEAD HP3 0FX

welcome to

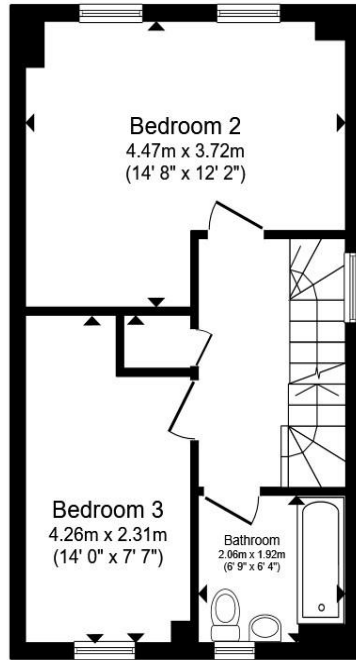
Bunting Close, HEMEL HEMPSTEAD

Located in the popular and sought after Aspen Park Development is this well presented three bedroom Town House offering spacious living accommodation, master with ensuite and garage with off-street parking for two cars. Call to book a viewing today.

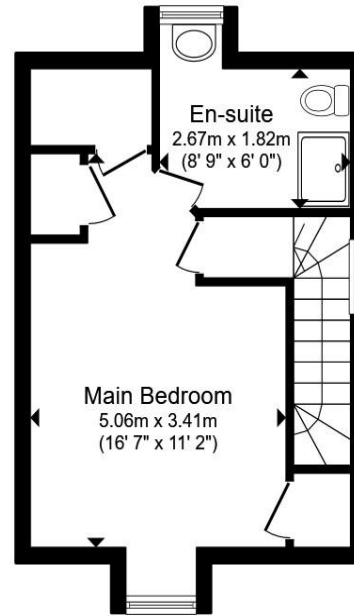




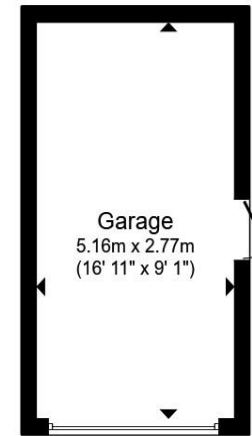
Ground Floor



First Floor



Second Floor



Garage

- Entrance Hall**
- Cloakroom**
- Lounge / Dining Room**
- Kitchen**
- First Floor Landing**
- Bedroom Two**
- Bedroom Three**
- Bathroom**
- Second Floor Landing**
- Bedroom One**
- En-Suite**
- Outside**
- Rear Garden**
- Garage With Parking**
- Two Allocated Parking Spaces**

Total floor area 115.5 m² (1,243 sq.ft.) approx

This floor plan is for illustrative purposes only. It is not drawn to scale. Any measurements, floor areas (including any total floor area), openings and orientation are approximate. No details are guaranteed, they cannot be relied upon for any purpose and they do not form part of any agreement. No liability is taken for any error, omission or misstatement. A party must rely upon its own inspection(s). Powered by www.propertybox.io



welcome to

Bunting Close, HEMEL HEMPSTEAD

- Two Allocated Off Street Parking Spaces
- Three Bedroom Town House
- Garage With Power
- Spacious Living Accommodation
- Master With En-Suite

Tenure: Freehold EPC Rating: C
Council Tax Band: E

offers over
£500,000



Please note the marker reflects the
postcode not the actual property

view this property online [brownandmerry.co.uk/Property/HHD110195](https://www.brownandmerry.co.uk/Property/HHD110195)



Property Ref:
HHD110195 - 0005

1. MONEY LAUNDERING REGULATIONS Intending purchasers will be asked to produce identification documentation at a later stage and we would ask for your co-operation in order that there is no delay in agreeing the sale. 2. These particulars do not constitute part or all of an offer or contract. 3. The measurements indicated are supplied for guidance only and as such must be considered incorrect. Potential buyers are advised to recheck measurements before committing to any expense. 4. We have not tested any apparatus, equipment, fixtures or services and it is in the buyers interest to check the working condition of any appliances. 5. Where an EPC, or a Home Report (Scotland only) is held for this property, it is available for inspection at the branch by appointment. If you require a printed version of a Home Report, you will need to pay a reasonable production charge reflecting printing and other costs. 6. We are not able to offer an opinion either written or verbal on the content of these reports and this must be obtained from your legal representative. 7. Whilst we take care in preparing these reports, a buyer should ensure that his/her legal representative confirms as soon as possible all matters relating to title including the extent and boundaries of the property and other important matters before exchange of contracts.

Brown & Merry is a trading name of Sequence (UK) Limited which is registered in England and Wales under company number 4268443, Registered Office is Cumbria House, 16-20 Hockliffe Street, Leighton Buzzard, Bedfordshire, LU7 1GN. VAT Registration Number is 500 2481 05.


brown & merry



01442 232400



HemelHempstead@brownandmerry.co.uk



57 Marlowes, HEMEL HEMPSTEAD,
Hertfordshire, HP1 1LE



[brownandmerry.co.uk](https://www.brownandmerry.co.uk)