

Guide Price £289,500



## 37 Meadow View, Uffculme, Cullompton, Devon, EX15 3DS

- No onward chain
- Large sitting/dining room with patio door
- Bathroom with white suite
- Driveway parking and garage
- Short walk to the village amenities
- 2 double bedrooms
- Kitchen overlooking the garden
- Gas central heating and uPVC double glazing
- Front and rear lawn gardens
- Exeter and Taunton 30 minutes' drive

**Sales, Lettings, Mortgages:**

Bampton 01398 332006 | Cullompton 01884 32100 | Tiverton 01884 253500

[\\*Watch the Seddons Video Tour\\*](#)

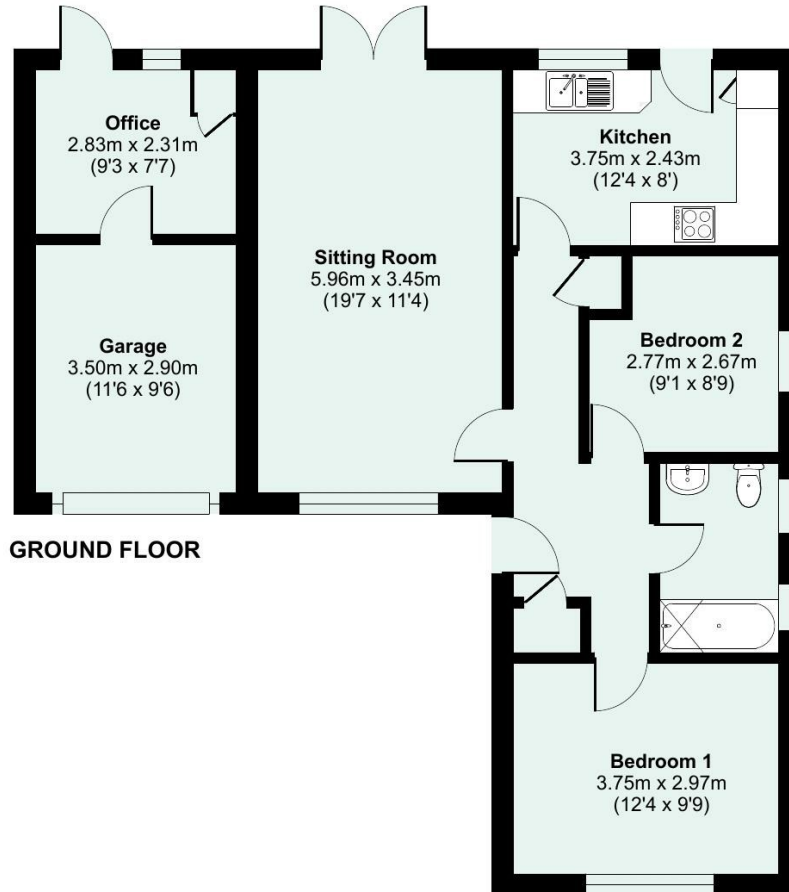
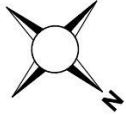
Lying in a popular, small close, this detached bungalow offers comfortable, easy to maintain accommodation with a garage, gardens and parking. Good village amenities, local bus services nearby and quick access to the motorway.

Approximate Area = 688 sq ft / 63.9 sq m

Garage = 182 sq ft / 16.9 sq m

Total = 870 sq ft / 80.8 sq m

For identification only - Not to scale



GROUND FLOOR

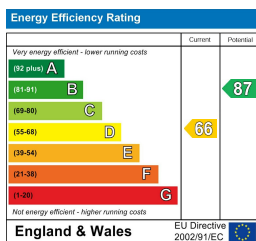
Floor plan produced in accordance with RICS Property Measurement 2nd Edition, Incorporating International Property Measurement Standards (IPMS2 Residential). © ncthecom 2026. Produced for Seddon Estate Agents LLP. REF: 1467971



## Council Tax Band

D

## EPC Rating



## Viewings

Viewings by arrangement only. Call 01884 32100 to make an appointment.