



Pinkmove

Thornbury Park

Offers in the region of £200,000

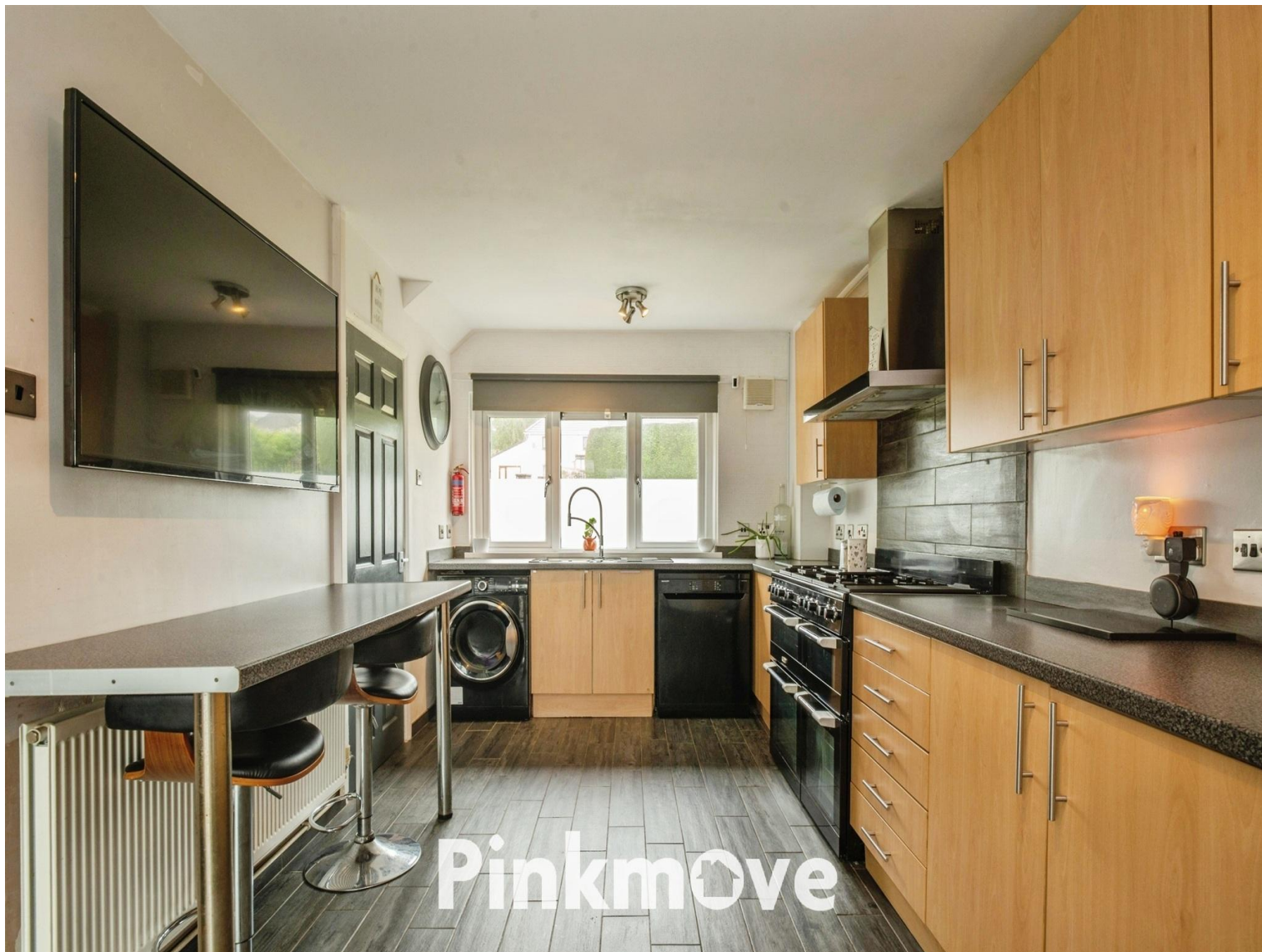
- Three-bedroom mid-terrace property
- Kitchen/dining room with breakfast bar
- Two double bedrooms with built-in storage
- Ground floor WC
- Enclosed rear patio garden
- Excellent transport links nearby
- Ideal first-time buy or investment opportunity
- EPC Rating: C



 3  1  2

Pinkmove

01633 746088
team@pinkmove.co.uk



Pinkmove

About the property

Situated in the sought-after area of Rogerstone, this three-bedroom mid-terrace property offers spacious living accommodation and excellent potential for improvement, making it an ideal opportunity for first-time buyers, families, or investors.

The ground floor comprises an entrance porch leading into a hallway, a convenient cloakroom/WC, and a generous lounge to the front. To the rear is a well-proportioned kitchen/dining room, featuring a breakfast bar and ample space for family living, with access to a bright conservatory overlooking the garden.

To the first floor are three well-proportioned bedrooms, with both double bedrooms benefiting from built-in storage, along with a modern shower room.

Externally, the property offers low-maintenance front and rear gardens, with a spacious enclosed rear patio—ideal for outdoor seating and entertaining.

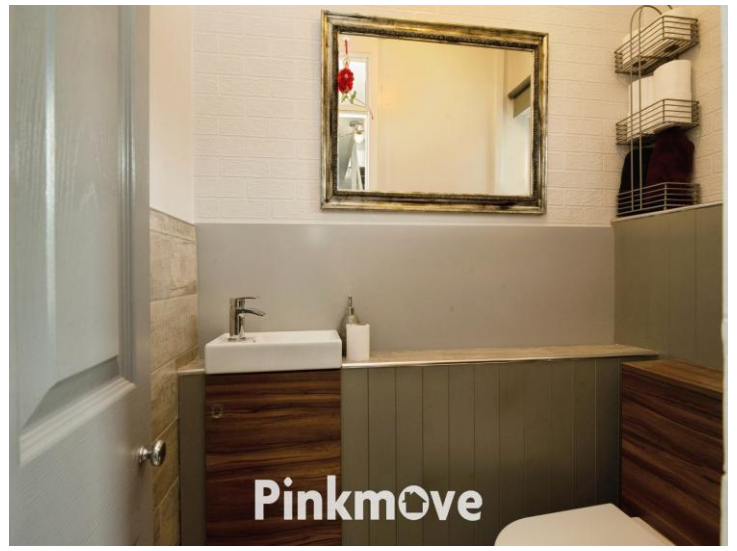
Conveniently located close to local schools, amenities, Rogerstone train station, and with easy access to the M4 motorway, this property is perfect for commuters.



Pinkmove



Pinkmove



Accommodation

Lounge

Kitchen/Dining Room

Conservatory

Wc

Bedroom 1

Bedroom 2

Bedroom 3

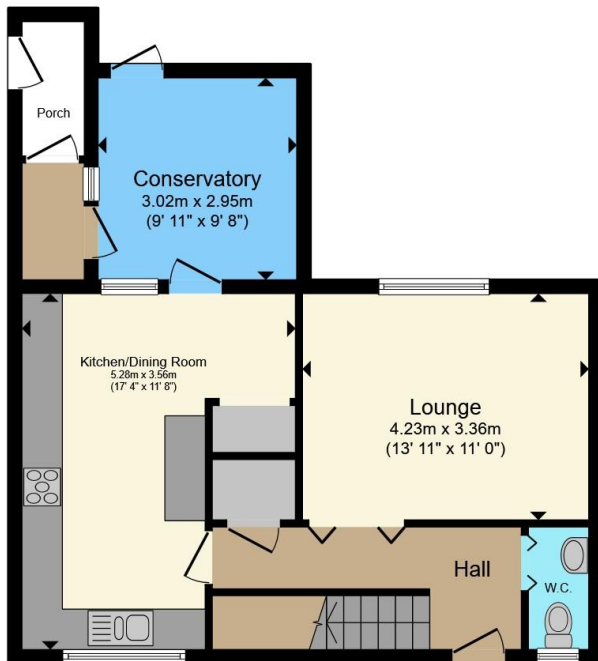
Shower Room

01633 746088

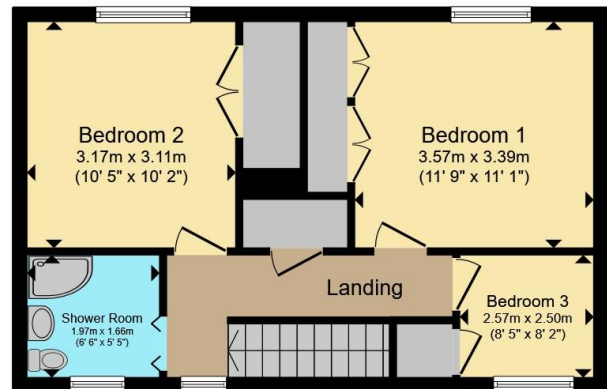
team@pinkmove.co.uk

Pinkmove

Floorplan



Ground Floor



First Floor

Total floor area 100.4 sq.m. (1,081 sq.ft.) approx

This floor plan is for illustrative purposes only. It is not drawn to scale. Any measurements, floor areas (including any total floor area), openings and orientation are approximate. No details are guaranteed, they cannot be relied upon for any purpose and they do not form part of any agreement. No liability is taken for any error, omission or misstatement. A party must rely upon its own inspection(s). Powered by www.focalagent.com

Pinkmove

Important Information

Note while we endeavour to make our sales details accurate and reliable, if there is any point which is of particular interest to you, please contact the office and we will be pleased to confirm the position for you. We have not personally tested any apparatus, equipment, fixtures, fittings or services and cannot verify they are in working order or fit for their purposes. Nothing in these particulars is intended to indicate that carpets or curtains, furnishings or fittings, electrical goods (whether wired or not). Gas fires or light fittings or any other fixtures not expressly included form part of the property offered for sale. This computer generated Floorplan, if applicable, is intended as a general guide to the layout and design of the property. It is not to scale and should not be relied upon for dimensions. Tenure: We cannot confirm the tenure of the property as we have not had access to the legal documents. The buyer is advised to obtain verification from their solicitor or surveyor.

Peter Alan Limited is registered in England and Wales under company number 2073153, Registered Office is Cumbria House, 16-20 Hockliffe Street, Leighton Buzzard, Bedfordshire, LU7 1GN. VAT Registration Number is 500 2481 05. For activities relating to regulated mortgages and non-investment insurance contracts, Peter Alan Limited is an appointed representative of Connells Limited which is authorised and regulated by the Financial Conduct Authority. Connells Limited's Financial Services Register number is 302221. Most buy-to-let

