



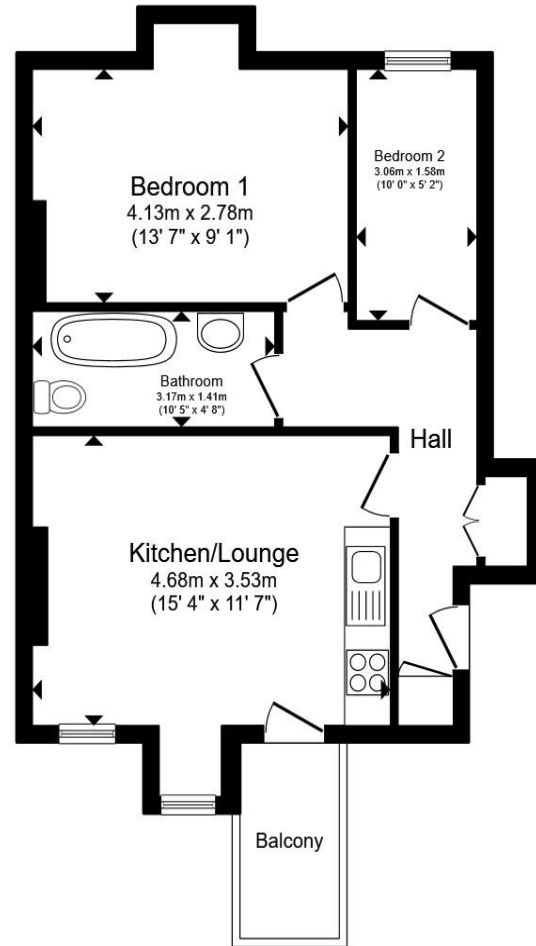
**Sea Road, Bexhill-On-Sea TN40 1JL**

**welcome to**

**Sea Road, Bexhill-On-Sea**

Wonderfully positioned by Bexhill Seafront and within 0.1 miles to the Train Station - this superb TOP-FLOOR APARTMENT boasts a PRIVATE BALCONY. Additional benefits include a SHARE OF FREEHOLD with a lease in excess of 990 years, communal garden and fantastic internal decorative order...





### Entrance Hall

### Kitchen/Living Room

15' 4" x 11' 7" ( 4.67m x 3.53m )

### Bedroom One

13' 7" x 9' 1" ( 4.14m x 2.77m )

### Bedroom Two

10' x 5' 2" ( 3.05m x 1.57m )

### Bathroom

Total floor area 47.8 m<sup>2</sup> (515 sq.ft.) approx

This floor plan is for illustrative purposes only. It is not drawn to scale. Any measurements, floor areas (including any total floor area), openings and orientation are approximate. No details are guaranteed, they cannot be relied upon for any purpose and they do not form part of any agreement. No liability is taken for any error, omission or misstatement. A party must rely upon its own inspection(s). Powered by [www.propertybox.io](http://www.propertybox.io)



welcome to

## Sea Road, Bexhill-On-Sea

- Two Bedrooms
- No Onward Chain
- Top Floor Seafront Apartment
- Share of Freehold with 990+ Year Lease
- Private Balcony From Living Room

Tenure: Leasehold EPC Rating: C

Council Tax Band: A Service Charge: 900.00

Ground Rent: Ask Agent

This is a Leasehold property with details as follows; Term of Lease 999 years from 24 Jun 2023. Should you require further information please contact the branch. Please Note additional fees could be incurred for items such as Leasehold packs.

guide price

**£150,000**



Please note the marker reflects the postcode not the actual property

**view this property online** [fox-and-sons.co.uk/Property/BOS113141](https://fox-and-sons.co.uk/Property/BOS113141)



Property Ref:  
BOS113141 - 0007

1. MONEY LAUNDERING REGULATIONS Intending purchasers will be asked to produce identification documentation at a later stage and we would ask for your co-operation in order that there is no delay in agreeing the sale. 2. These particulars do not constitute part or all of an offer or contract. 3. The measurements indicated are supplied for guidance only and as such must be considered incorrect. Potential buyers are advised to recheck measurements before committing to any expense. 4. We have not tested any apparatus, equipment, fixtures or services and it is in the buyers interest to check the working condition of any appliances. 5. Where an EPC, or a Home Report (Scotland only) is held for this property, it is available for inspection at the branch by appointment. If you require a printed version of a Home Report, you will need to pay a reasonable production charge reflecting printing and other costs. 6. We are not able to offer an opinion either written or verbal on the content of these reports and this must be obtained from your legal representative. 7. Whilst we take care in preparing these reports, a buyer should ensure that his/her legal representative confirms as soon as possible all matters relating to title including the extent and boundaries of the property and other important matters before exchange of contracts.

  
fox & sons



**01424 224243**



[BexhillonSea@fox-and-sons.co.uk](mailto:BexhillonSea@fox-and-sons.co.uk)



1 Devonshire Square, BEXHILL-ON-SEA, East  
Sussex, TN40 1AB



**fox-and-sons.co.uk**