



**Connells**

Maw Close  
Basingstoke



### Property Description

A beautifully presented and naturally bright three-bedroom family home, situated in the highly sought-after area of Old Hatch Warren. This well-maintained property offers spacious accommodation throughout and has been tastefully updated to create a modern and welcoming home.

Upon entering, you are welcomed by a generous lounge filled with natural light, providing the perfect space to relax and unwind. The property benefits from a separate kitchen leading through to a dining room, ideal for family meals and entertaining, alongside the convenience of a utility room and downstairs cloakroom. The first floor offers three well-proportioned bedrooms and a stunning, recently updated four-piece family bathroom, finished to a high standard and featuring a separate bath and walk-in shower, creating a luxurious space for everyday living.



Located in the ever-popular Old Hatch Warren, the property enjoys a peaceful residential setting with excellent access to local schools, shops, amenities, countryside walks, and transport links, including easy access to Basingstoke town centre and the M3. An excellent opportunity for first-time buyers, growing families, or those looking to move into one of Basingstoke's most desirable locations.

## Porch

## Lounge

Double glazed window to front

## Kitchen/Diner

Double glazed french doors to rear, double glazed window to rear, space for dishwasher, integrated electric oven with gas hob and extractor fan, space for fridge-freezer

## Utility Room

Space for washing machine, space for tumble-dryer

## W/C

Frosted double glazed window to front, low level w/c, pedestal hand wash basin

## Bedroom 1

Double glazed window to front, built in wardrobe

## Bedroom 2

Double glazed window to rear

## Bedroom 3

Double glazed window to front

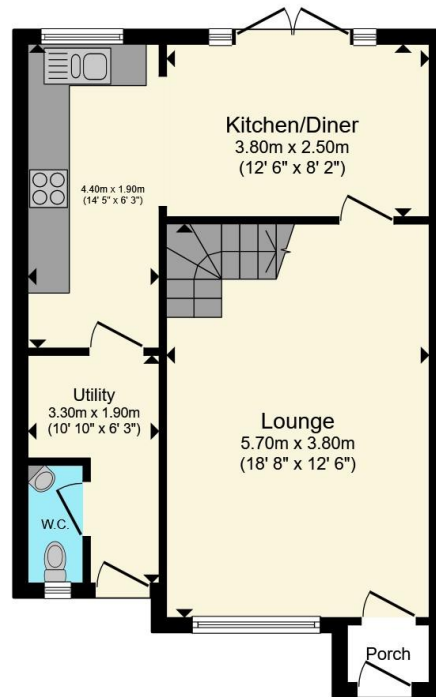
## Bathroom

Frosted double glazed window to rear, enclosed panel bath, pedestal hand wash basin, low level w/c, shower cubicle.

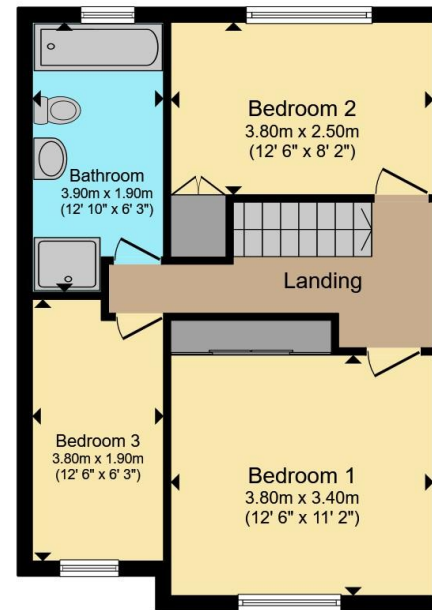








**Ground Floor**



**First Floor**

Total floor area 94.3 m<sup>2</sup> (1,015 sq.ft.) approx

This floor plan is for illustrative purposes only. It is not drawn to scale. Any measurements, floor areas (including any total floor area), openings and orientation are approximate. No details are guaranteed, they cannot be relied upon for any purpose and they do not form part of any agreement. No liability is taken for any error, omission or misstatement. A party must rely upon its own inspection(s). Powered by [www.propertybox.io](http://www.propertybox.io)



To view this property please contact Connells on

**T 01256 398237**

**E [basinstokesouth@connells.co.uk](mailto:basinstokesouth@connells.co.uk)**

56 Broadmere Road Beggarwood  
BASINGSTOKE RG22 4AQ

EPC Rating: C Council Tax  
Band: C

Tenure: Freehold

**view this property online [connells.co.uk/Property/KSH105893](http://connells.co.uk/Property/KSH105893)**



1. MONEY LAUNDERING REGULATIONS Intending purchasers will be asked to produce identification documentation at a later stage and we would ask for your co-operation in order that there will be no delay in agreeing the sale. 2. These particulars do not constitute part or all of an offer or contract. 3. The measurements indicated are supplied for guidance only and as such must be considered incorrect. Potential buyers are advised to recheck measurements before committing to any expense. 4. We have not tested any apparatus, equipment, fixtures, fittings or services and it is in the buyers interest to check the working condition of any appliances.

Connells Residential is registered in England and Wales under company number 1489613, Registered Office is Cumbria House, 16-20 Hockliffe Street, Leighton Buzzard, Bedfordshire, LU7 1GN. VAT Registration Number is 500 2481 05.

**See all our properties at [www.connells.co.uk](http://www.connells.co.uk) | [www.rightmove.co.uk](http://www.rightmove.co.uk) | [www.zoopla.co.uk](http://www.zoopla.co.uk)**

Property Ref: KSH105893 - 0002