



ST. GEORGES SQUARE
PIMLICO

JACKSON-STOPS 

ST. GEORGES SQUARE PIMLICO, SW1V

ASKING PRICE: £1,600 PER WEEK

Situated on the prestigious St. Georges Square, an impressive apartment which has been tastefully refurbished throughout.

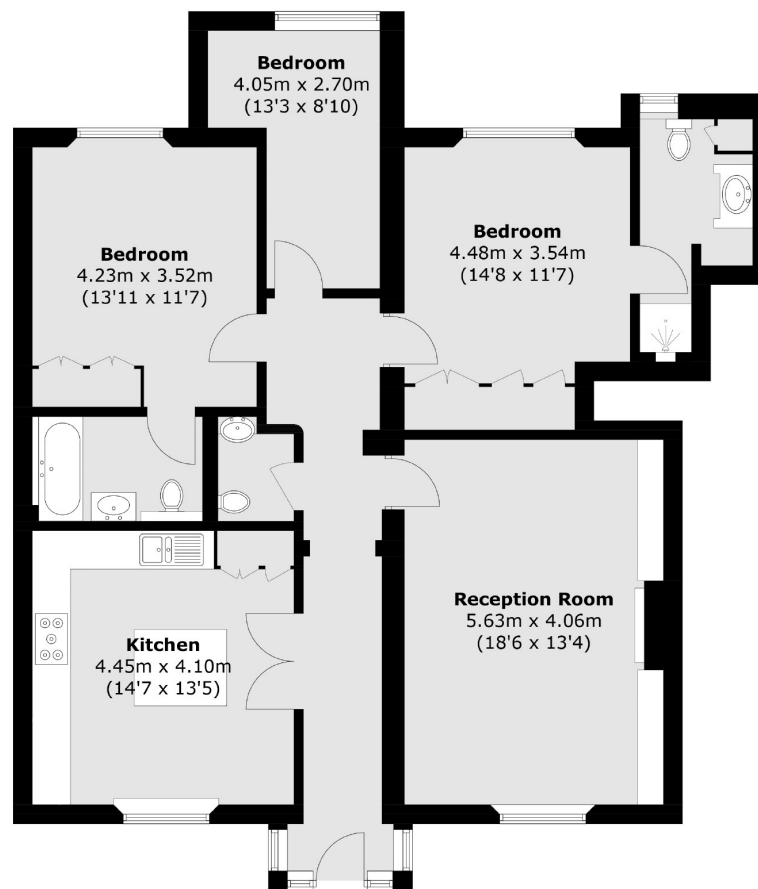
The property has been designed to the highest specification and beautifully furnished. The property offers two double bedrooms, a third bedroom or study, spacious reception, an eat in kitchen and guest WC. Just 427 feet from Pimlico Underground Station, 0.7 miles from Vauxhall Station, 0.8 miles from Victoria Station and 1 miles from St. James's Park and Battersea Park.



KEY FEATURES

- Three Bedrooms
- Two Bathrooms
- Kitchen
- Reception
- WC
- Tax Band: G





Ground Floor

Total area (approx.): 112.1 sq. m (1,206.6 sq. ft)

Energy Rating: C. We aim to make our particulars both accurate and reliable. However they are not guaranteed; nor do they form part of an offer or contract. If you require clarification on any points then please contact us, especially if you are travelling some distance to view. Please note that appliances and heating systems have not been tested and therefore no warranties can be given as to their good working order.

ASKING PRICE: £1,600 PER WEEK

PIMLICO

020 7828 4243

pimlicolettings@jackson-stops.com

jackson-stops.co.uk

JACKSON-STOPS 