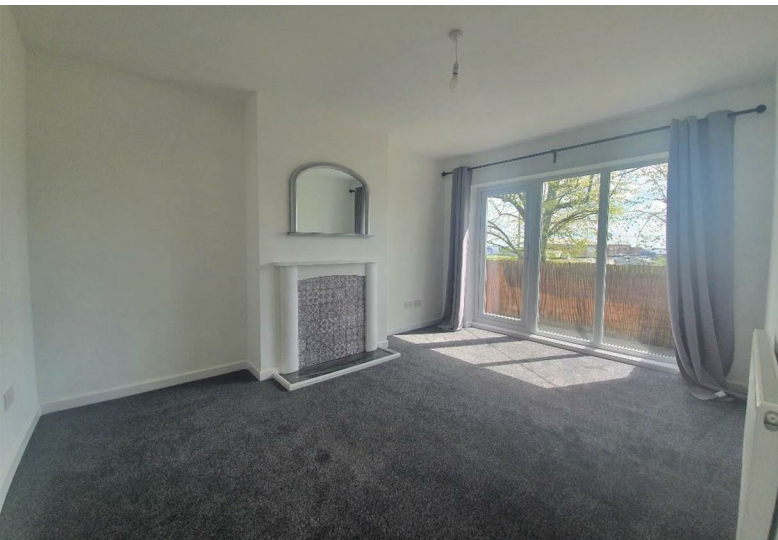




 x2

 x1

 x1



**Selsey Close
Stone House Estate
£800 Per Calendar Month**



This well-presented two-bedroom first-floor maisonette is ideally situated in the south of Coventry, offering excellent access to key road links including the A45 and A46, as well as wider motorway networks, making it a great choice for commuters. A range of local amenities, shops, schools and green spaces are also conveniently close by.

The accommodation briefly comprises an entrance hallway leading to a spacious lounge with direct access to a private balcony, perfect for relaxing. There are two generously sized double bedrooms, a modern bathroom, and a fitted kitchen complete with an integrated electric oven and hob.

Further benefits include double glazing, gas central heating, and an external garden area.

This property offers comfortable, practical living in a

- EPC Rating: C
- First Floor Maisonette
- Unfurnished
- Lounge With Balcony Access
- Fitted Kitchen With Integrated Electric Oven & Hob
- Bathroom With Shower
- Rear Garden & Garage Access
- Double Glazing & Gas Central Heating
- Convenient Location
- Council Tax Band: A



PLEASE NOTE: General Information

We have been informed by the vendor that the tenure of the property is . However, you are recommended to have this information verified by your legal advisor at the earliest opportunity. All measurements are approximate and quoted in metric and are for general guidance only and whilst every attempt has been made to ensure accuracy, they must not be relied on. The fixture, fittings and appliances referred to have not been tested and therefore no guarantee can be given that they are in working order. Internal photos are produced for internal general information and it must not be inferred that any item would be included within the sale.

Elite Property

Sterling House, 112 Walsgrave Road, Stoke, Coventry, West Midlands, CV2 4ED

Tel: 024 7665 2200

www.eliteproperty.co

