



Hall Road, NW8 £1,950 Per Month

Available to Let- is this bright and well-presented studio apartment on the lower ground floor of a popular purpose-built block in St John's Wood.

The property comprises a fully fitted kitchen, spacious studio room, and modern bathroom. Heating and hot water are included in the rent, and the property is offered furnished. Residents also benefit from attractive communal gardens. Ideally located within walking distance of St John's Wood and Maida Vale stations, as well as a wide range of local shops, cafés, and restaurants.

- AVAILABLE TO LET NOW - FURNISHED
- A spacious studio apartment
- Offering 315 sq ft of internal accommodation
- Well-maintained communal gardens
- Close to St John's Wood (Jubilee Line - Zone 2)
- Council: Westminster (C) Deposit: £2,134

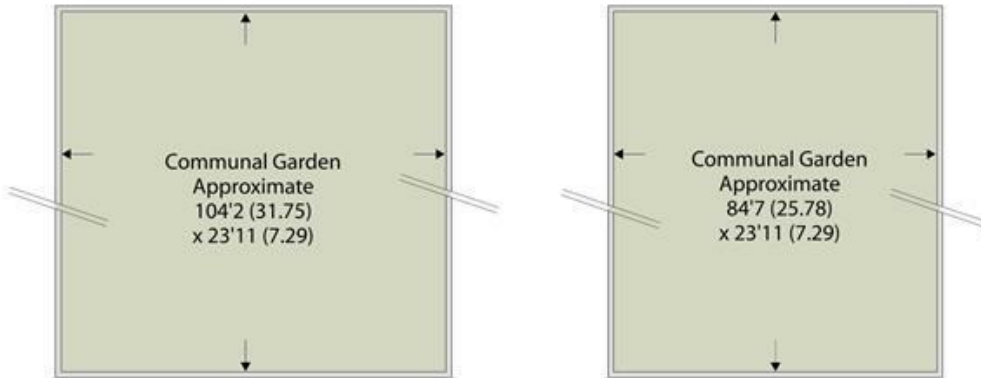


020 8450 9377 - 020 8459 1133
rentals@cameronsstiff.co.uk

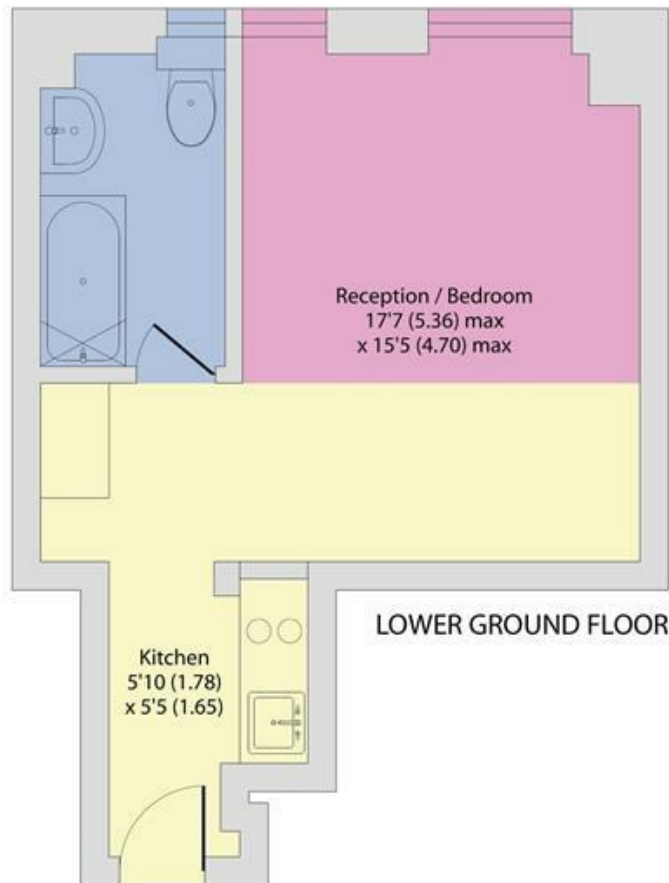
Grove Hall Court, Hall Road, London, NW8

Approximate Area = 315 sq ft / 29 sq m

For identification only - Not to scale



EPC: C
Ref: 18080959



 Floor plan produced in accordance with RICS Property Measurement 2nd Edition, Incorporating International Property Measurement Standards (IPMS2 Residential). © nichecom 2025. Produced for Camerons Stiff & Co. REF: 846772

