



117 Croydon Road

London, SE20 7TT

£2,250 Per Month

Welcome to this stunning newly refurbished three double-bedroom Victorian conversion, ideally located in Anerley. This spacious and elegant property offers a perfect blend of period charm and modern living, with beautiful updates throughout.

This property boasts three generously sized double bedrooms, each filled with natural light, alongside two separate reception rooms that provide ample space for entertaining or relaxing. The two modern bathrooms are finished to a high standard, complementing the contemporary refurbishment seen throughout the flat, which includes updated flooring, fixtures, and fittings. Additionally, residents will enjoy sole use of a rear garden, perfect for outdoor living.

Located in the heart of Anerley, this property is perfectly positioned for easy access to local amenities, schools, and transport links, including Anerley and Penge West stations for convenient commuting into Central London.

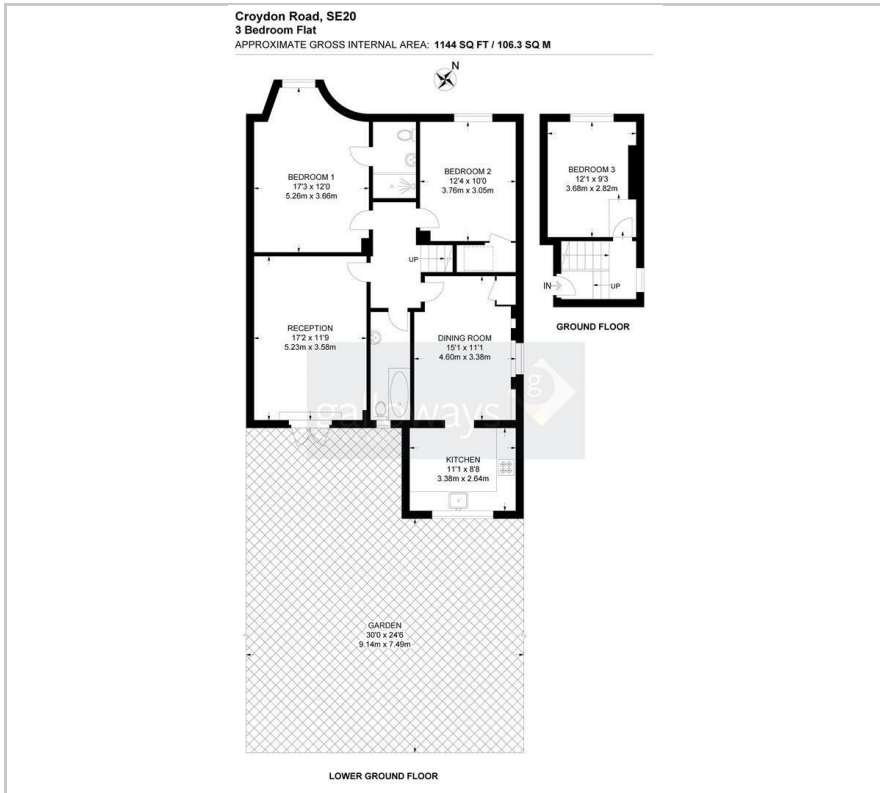
Viewing

Please contact our Galloways Penge Office on 020 8778 1120 if you wish to arrange a viewing appointment for this property or require further information.

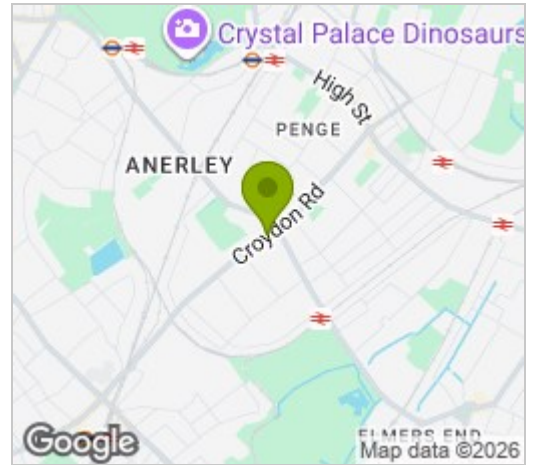
- THREE DOUBLE BEDROOMS
- TWO SEPARATE RECEPTION ROOMS
- SPLIT LEVEL LOWER GROUND FLOOR FLAT
- MODERN STYLISH KITCHEN
- BATHROOM AND EN-SUITE WITH SHOWER
- DIRECT ACCESS TO SOLE USE REAR GARDEN
- 12 MINUTES WALK TO ANERLEY STATION
- 10 MINUTE WALK TO BIRKBECK TRAM STOP
- 21 MINUTES WALK TO CRYSTAL PALACE PARK
- (ALL WALKING TIMES ESTIMATED VIA GOOGLE MAPS)



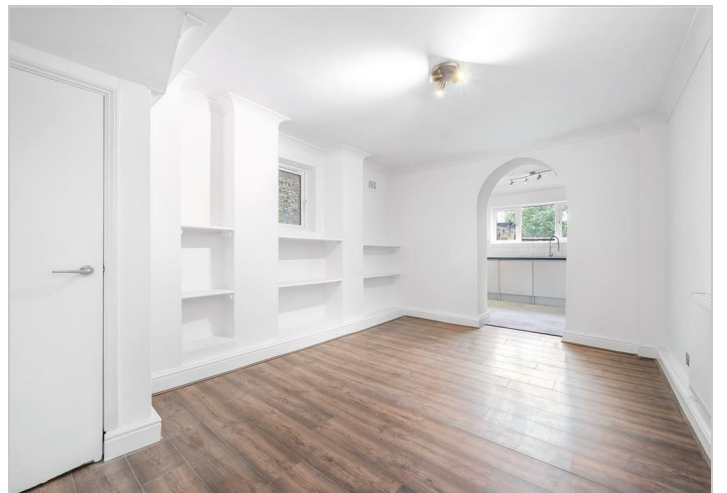
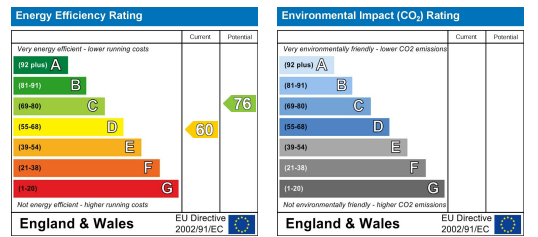
Floor Plan



Area Map



Energy Efficiency Graph



These particulars, whilst believed to be accurate are set out as a general outline only for guidance and do not constitute any part of an offer or contract. Intending purchasers should not rely on them as statements of representation of fact, but must satisfy themselves by inspection or otherwise as to their accuracy. No person in this firm's employment has the authority to make or give any representation or warranty in respect of the property.