



Connells

Greenfield
Welwyn Garden City



Property Description

This modern three bedroom semi-detached home is positioned in a sought-after West Side location, enjoying an elevated outlook over greenery.

The property offers a bright and well-presented interior throughout, with a modern kitchen diner creating a lovely sociable space for family living. There are three good-sized bedrooms, along with a separate bathroom and WC.

Externally, the home benefits from a large shed, providing excellent storage or potential for hobby use. Ideally located close to good schools and local amenities, this would make a fantastic family home.



Kitchen

16' 1" x 14' 2" (4.90m x 4.32m)

Lounge

15' 11" x 10' 2" (4.85m x 3.10m)

Bedroom 1

14' 1" x 8' 9" (4.29m x 2.67m)

Bedroom 2

10' x 8' (3.05m x 2.44m)

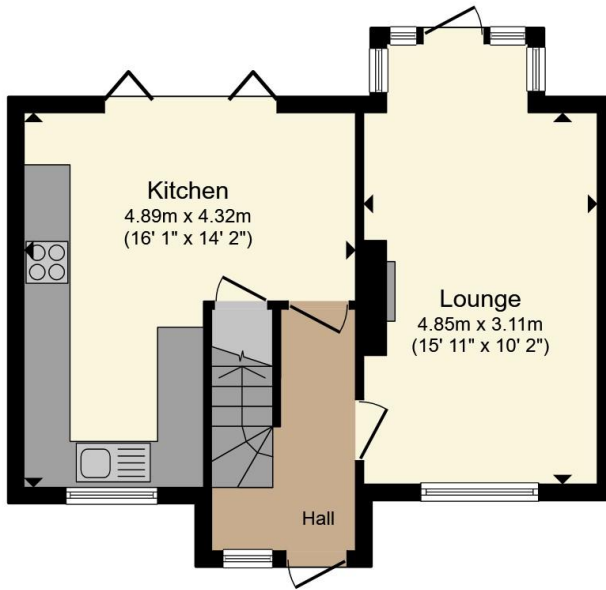
Bedroom 3

10' 10" x 6' 10" (3.30m x 2.08m)

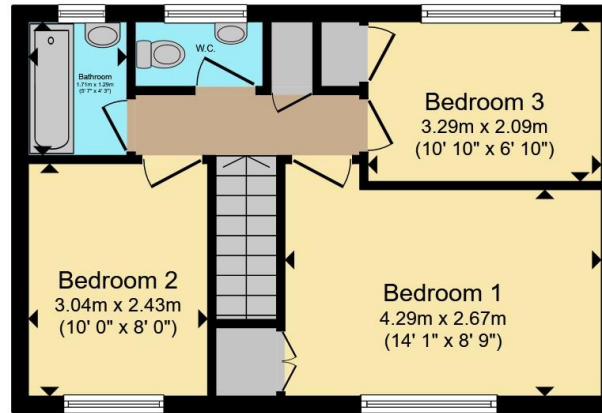
Bathroom

5' 7" x 4' 3" (1.70m x 1.30m)





Ground Floor



First Floor

Total floor area 76.1 m² (819 sq.ft.) approx

This floor plan is for illustrative purposes only. It is not drawn to scale. Any measurements, floor areas (including any total floor area), openings and orientation are approximate. No details are guaranteed, they cannot be relied upon for any purpose and they do not form part of any agreement. No liability is taken for any error, omission or misstatement. A party must rely upon its own inspection(s). Powered by www.propertybox.io



To view this property please contact Connells on

T 01707 322 903

E welwyngardencity@connells.co.uk

38 Wigmores North
WELWYN GARDEN CITY AL8 6PH

EPC Rating: C Council Tax
Band: D

view this property online connells.co.uk/Property/WWY307696

Tenure: Freehold



1. MONEY LAUNDERING REGULATIONS Intending purchasers will be asked to produce identification documentation at a later stage and we would ask for your co-operation in order that there will be no delay in agreeing the sale. 2. These particulars do not constitute part or all of an offer or contract. 3. The measurements indicated are supplied for guidance only and as such must be considered incorrect. Potential buyers are advised to recheck measurements before committing to any expense. 4. We have not tested any apparatus, equipment, fixtures, fittings or services and it is in the buyers interest to check the working condition of any appliances.

Connells Residential is registered in England and Wales under company number 1489613, Registered Office is Cumbria House, 16-20 Hockliffe Street, Leighton Buzzard, Bedfordshire, LU7 1GN. VAT Registration Number is 500 2481 05.

See all our properties at www.connells.co.uk | www.rightmove.co.uk | www.zoopla.co.uk

Property Ref: WWY307696 - 0010