



Manor Road, TW2

£350,000

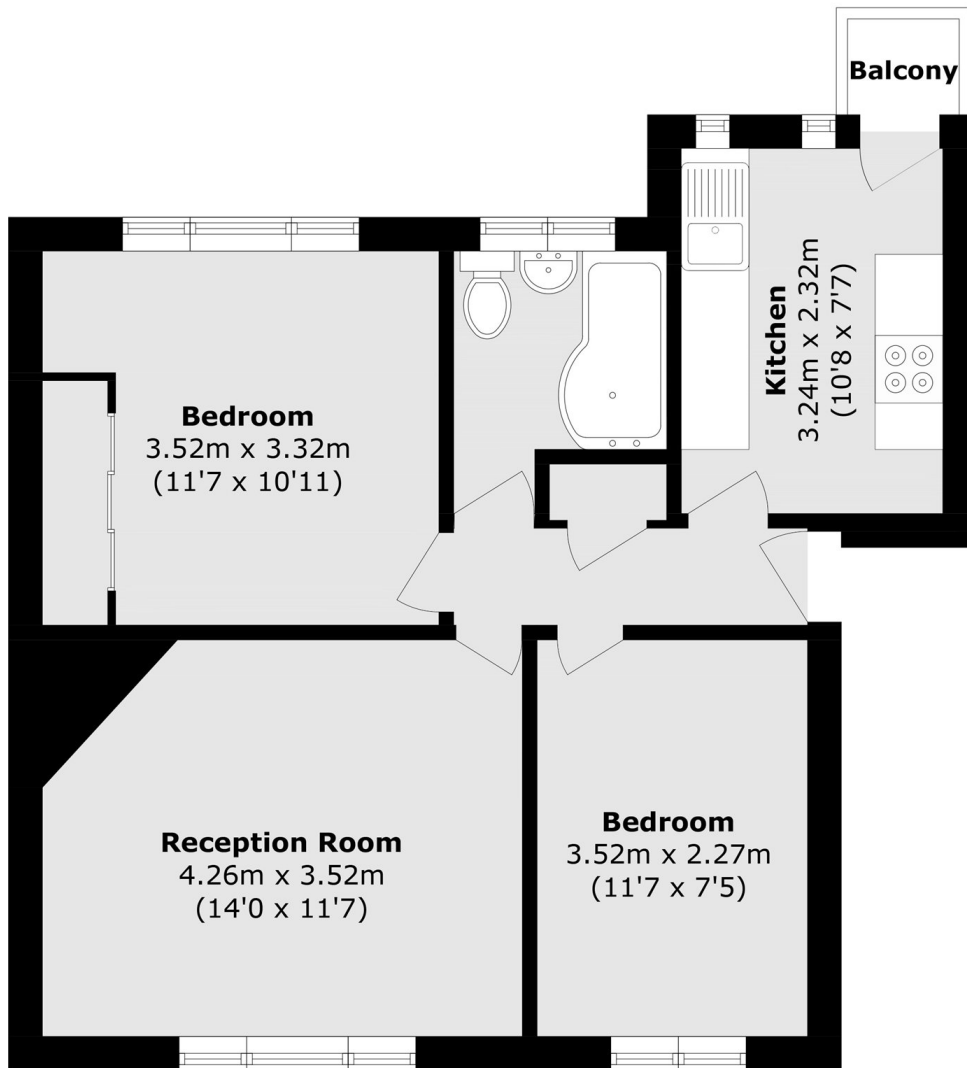
Well-presented first-floor apartment overlooking communal gardens, featuring two double bedrooms, a spacious reception room, modern kitchen and bathroom, balcony, residents' parking, no onward chain, and direct access to communal grounds and Crane Park.

Manor Court is a popular residential development which is close to excellent schools such as Waldegrave Girls and Trafalgar School. Twickenham Green and the high street are less than a mile away.

- Well Presented • Two Double Bedrooms • First Floor •
- No Chain • Long Lease • Popular Location •

SNELLERS

ESTATE AGENTS



Total area (approx.): 52.2 sq. m (561.8 sq. ft)
Balcony area (approx.): 0.8 sq. m (8.6 sq. ft)

Snellers Twickenham Sales
64-66 Heath Road
Twickenham
TW1 4BX
020 8892 5555
twickenhamsales@snellers.co.uk

Energy Rating: C We aim to make our particulars both accurate and reliable. However they are not guaranteed; nor do they form part of an offer or contract. If you require clarification on any points then please contact us, especially if you're traveling some distance to view. Please note that appliances and heating systems have not been tested and therefore no warranties can be given as to their good working order