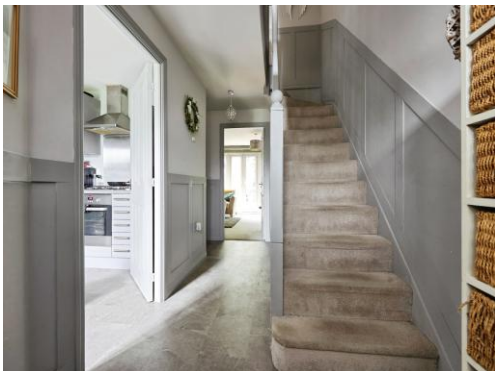




Connells

Wagstaff Way
Salisbury



Property Description

A stylish and well-maintained property featuring a contemporary fitted kitchen and well presented throughout. Set within a neat frontage on Wagstaff Way, Salisbury. With accommodation set over three floors this four bedroom house includes an en-suite to bedroom one, cloakroom and low maintenance garden.

Conveniently located close to local amenities and transport links to Salisbury City Centre and train station.

Entrance Hall

Access to kitchen, lounge and cloakroom, stairs to first floor landing and storage cupboard.

Lounge

13' 11" x 12' 7" (4.24m x 3.84m)
French doors to rear garden.

Kitchen

12' 4" x 7' 4" (3.76m x 2.24m)
Comprising wall and base units with work surfaces over, drainer sink unit with mixer tap, integrated oven, inset gas hob with stainless steel hood over, space for washing machine, dishwasher and fridge/freezer, breakfast bar and front aspect.

Cloakroom

Comprising wash hand basin with mixer taps and WC.

First Floor Landing

Access to bedroom two and four and bathroom, stairs to second floor landing.

Bedroom Two

13' 11" x 12' 8" (4.24m x 3.86m)
Rear aspect.

Bedroom Four

9' 5" x 7' 2" (2.87m x 2.18m)
Front aspect.

Bathroom

Comprising a panel enclosed bath with shower over and glass screen, pedestal wash hand basin with mixer tap and WC.

Second Floor Landing

Door to bedrooms one and three, storage cupboard.

Bedroom One

13' 11" x 12' 7" (4.24m x 3.84m)
Rear aspect.

En-Suite

Comprising shower unit, wash hand basin and WC.

Bedroom Three

13' 11" x 9' 2" (4.24m x 2.79m)
Front aspect.

Outside

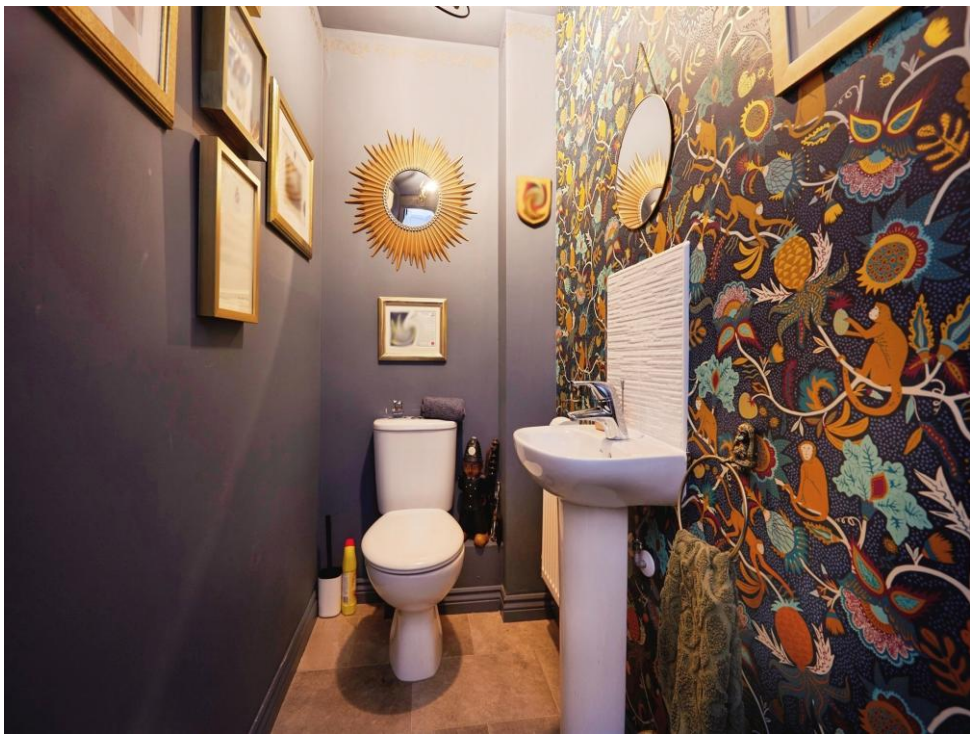
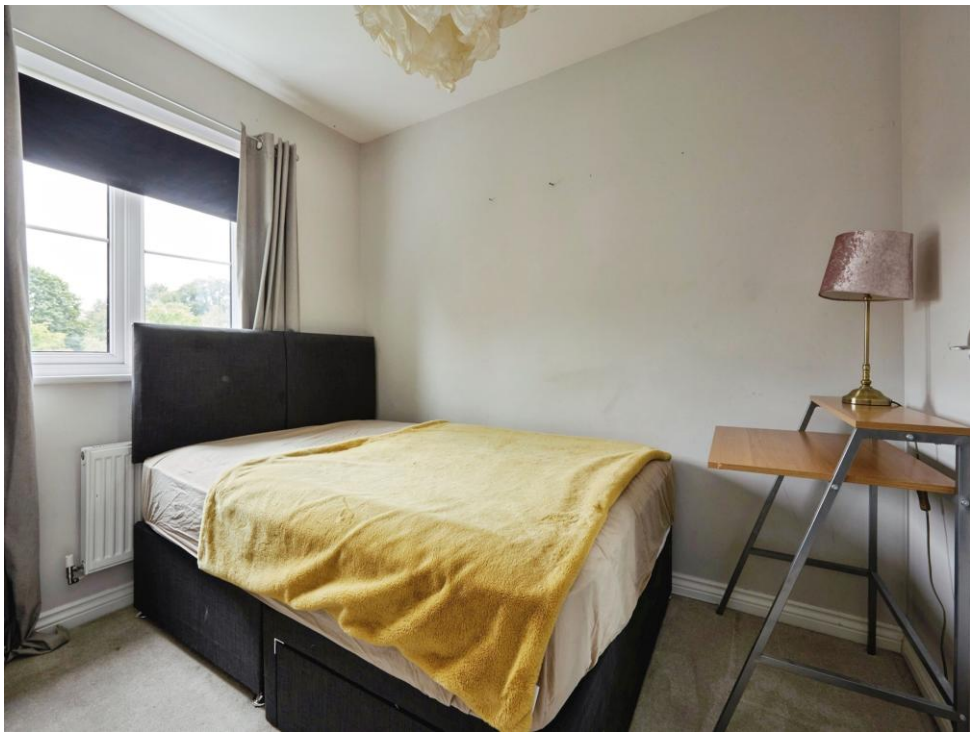
Rear Garden

This low maintenance landscaped garden offers a patio seating area leading from the lounge French doors with path to the rear. Climber plants, mature shrubs and a wooden planter border the garden. Artificial grass leads to the raised decked area currently housing a hot tub and timber pergola. Other features include timber shed, gated side access and water butt.

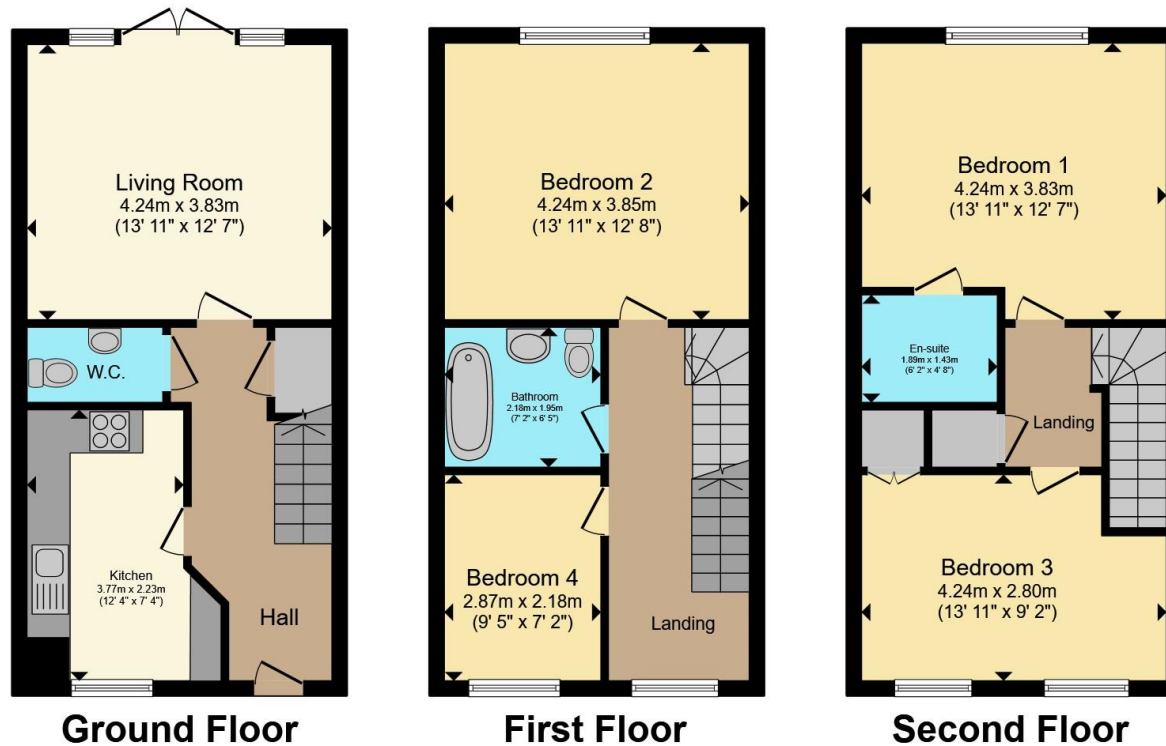
Parking

Two allocated parking spaces.









Total floor area 112.7 m² (1,213 sq.ft.) approx

This floor plan is for illustrative purposes only. It is not drawn to scale. Any measurements, floor areas (including any total floor area), openings and orientation are approximate. No details are guaranteed, they cannot be relied upon for any purpose and they do not form part of any agreement. No liability is taken for any error, omission or misstatement. A party must rely upon its own inspection(s). Powered by www.propertybox.io



To view this property please contact Connells on

T 01722 328 562
E salisbury@connells.co.uk

46-50 Castle Street
 Salisbury SP1 3TS

EPC Rating: C Council Tax
 Band: D

Tenure: Freehold

view this property online connells.co.uk/Property/SAL308475



1. MONEY LAUNDERING REGULATIONS Intending purchasers will be asked to produce identification documentation at a later stage and we would ask for your co-operation in order that there will be no delay in agreeing the sale. 2. These particulars do not constitute part or all of an offer or contract. 3. The measurements indicated are supplied for guidance only and as such must be considered incorrect. Potential buyers are advised to recheck measurements before committing to any expense. 4. We have not tested any apparatus, equipment, fixtures, fittings or services and it is in the buyers interest to check the working condition of any appliances.

Connells Residential is registered in England and Wales under company number 1489613, Registered Office is Cumbria House, 16-20 Hockliffe Street, Leighton Buzzard, Bedfordshire, LU7 1GN. VAT Registration Number is 500 2481 05.

See all our properties at www.connells.co.uk | www.rightmove.co.uk | www.zoopla.co.uk

Property Ref: SAL308475 - 0007