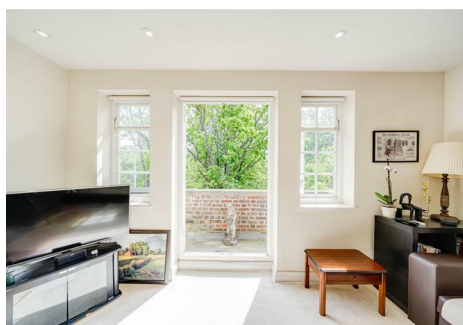
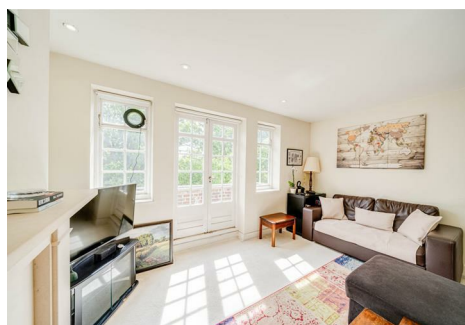


est 1979

Jeremy
Leaf & Co.



Lyttelton Court, Lyttelton Road, London

£430,000

- 2 spacious bedrooms
- Contemporary bathroom
- 2 Balconies
- Bright reception room
- Close to local amenities
- Viewings are highly recommended

98 High Road, London, N2 9EB
020 8444 5222

eastfinchley@jeremyleaf.co.uk
<https://www.jeremyleaf.co.uk/>

Lyttelton Road, London, N2 0ED

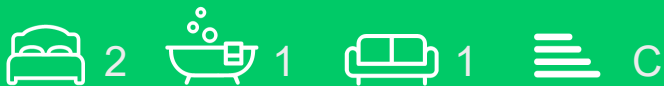
A charming two-bedroom flat situated on the desirable Lyttelton Road, offering a perfect blend of urban convenience and tranquil living.

This property represents an excellent opportunity for first-time buyers, small families, or buy-to-let investors seeking a well-located London retreat.

The accommodation comprises a welcoming reception room, thoughtfully designed to provide an inviting space for both relaxation and entertaining. The flat features two well-proportioned bedrooms and a smartly configured layout that maximises the available floor space. The interior is completed by a stylish, contemporary bathroom finished to a high standard.

Ideally positioned for the local amenities of the area, the property is just a short walk from a variety of independent shops, cafes, and green open spaces. This location is perfect for those looking to enjoy the vibrancy of the city while maintaining a peaceful home environment.

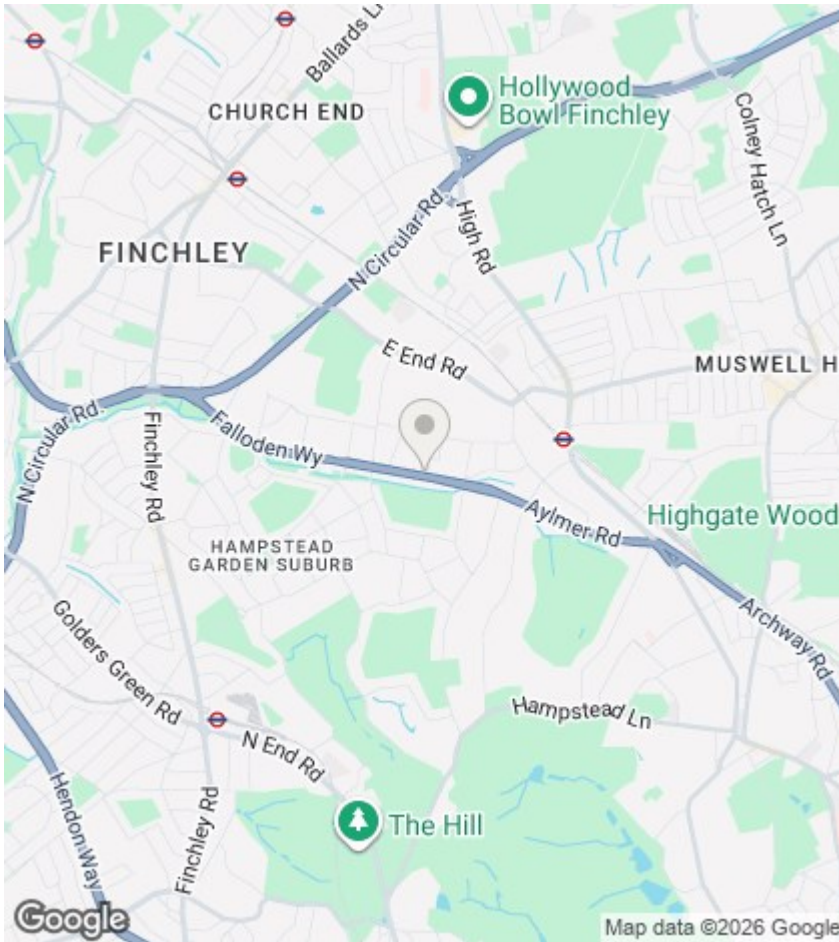
Viewing is highly recommended to appreciate the space and location on offer.



Council Tax Band: D







Directions

Viewings

Viewings by arrangement only. Call 020 8444 5222 to make an appointment.

EPC Rating:

C

| Energy Efficiency Rating | | Current | Potential |
|---|---|-------------------------|-----------|
| Very energy efficient - lower running costs | | | |
| (92 plus) | A | | |
| (81-91) | B | | |
| (69-80) | C | 70 | 77 |
| (55-68) | D | | |
| (39-54) | E | | |
| (21-38) | F | | |
| (1-20) | G | | |
| Not energy efficient - higher running costs | | | |
| England & Wales | | EU Directive 2002/91/EC | |

