

for sale

£300,000



Harrier Drive Finberry Ashford TN25 7GR

A beautifully presented two-bedroom home situated in the sought-after Finberry development, Harrier Drive.



Harrier Drive Finberry Ashford TN25 7GR

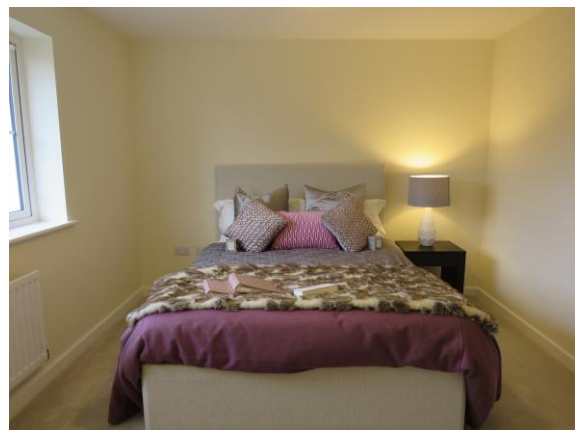
Cloakroom/Wc

Lounge Area

17' 2" x 13' 7" (5.23m x 4.14m)

Kitchen Area

12' 4" x 6' 3" (3.76m x 1.91m)



First Floor

Bedroom 1

13' 7" x 10' 6" (4.14m x 3.20m)

Bedroom 2

13' 6" x 8' 1" (4.11m x 2.46m)

Bathroom

Outside

Allocated Parking

Rear Garden

Agents Note

'The Vendor advises that they pay £100 every quarter for management charges'



To view this property please contact Connells on

T 01233 502020
E parkfarm@connells.co.uk

Unit 3 Moatfield Meadow Kingsnorth
ASHFORD TN23 3LU

Property Ref: PFM406900 - 0002

Tenure:Freehold EPC Rating: C

Council Tax Band: C

view this property online
[connells.co.uk/Property/PFM406900](https://www.connells.co.uk/Property/PFM406900)



1. MONEY LAUNDERING REGULATIONS Intending purchasers will be asked to produce identification documentation at a later stage and we would ask for your co-operation in order that there will be no delay in agreeing the sale. 2. These particulars do not constitute part or all of an offer or contract. 3. The measurements indicated are supplied for guidance only and as such must be considered incorrect. Potential buyers are advised to recheck measurements before committing to any expense. 4. We have not tested any apparatus, equipment, fixtures, fittings or services and it is in the buyers interest to check the working condition of any appliances.

Connells Residential is registered in England and Wales under company number 1489613, Registered Office is Cumbria House, 16-20 Hockliffe Street, Leighton Buzzard, Bedfordshire, LU7 1GN. VAT Registration Number is 500 2481 05.

see all our properties at www.connells.co.uk | www.rightmove.co.uk | www.zoopla.co.uk