



Connells

Florence Park Road
Oxford



Property Description

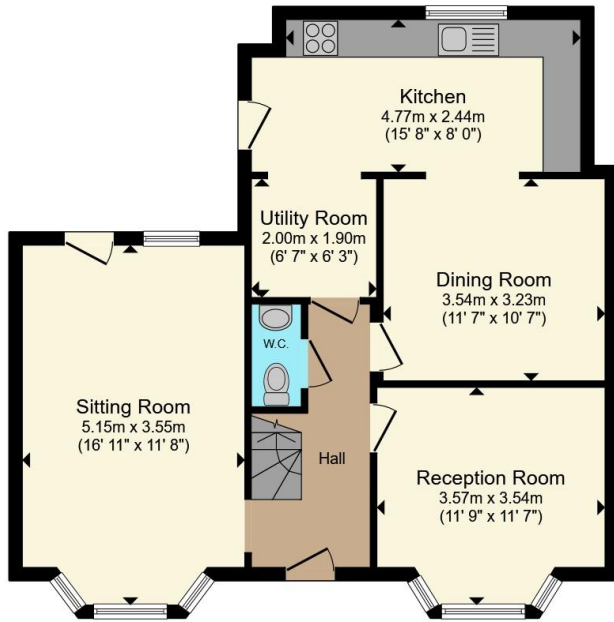
Upon entering the property, a welcoming hallway provides access to the principal ground floor accommodation. To the left is a bay-fronted sitting room with a door opening directly onto the rear garden, while to the right is a second bay-fronted reception room offering a separate living or family space. To the rear of the property is an open-plan kitchen and dining room, creating a practical area for everyday living and entertaining. The kitchen is fitted with a range of wall and base units and has a gas hob, electric oven and is plumbed for a washing machine. Leading off the kitchen is a utility room, which provides additional storage and workspace. The rear garden can also be accessed directly from the kitchen. There is also a ground floor WC situated off the hallway.

Stairs from the hallway lead to the first floor, which comprises four well-proportioned bedrooms. The principal bedroom benefits from an en-suite shower room, while the remaining bedrooms are served by a separate family bathroom.

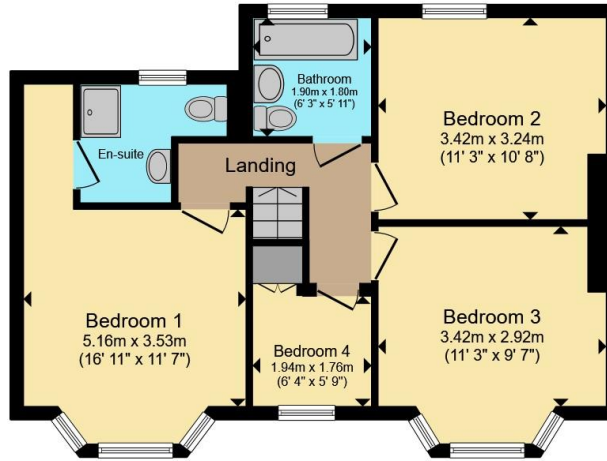
Externally, the property features a front garden, driveway parking for multiple vehicles and a low-maintenance rear garden with gated side access, providing convenient access from the front of the property.

Florence Park Road is located adjacent to the popular Florence Park, with its green open spaces, café, and recreational facilities. Cowley Centre is within easy reach, offering a range of supermarkets, shops, cafés, restaurants and Templars Square Shopping Centre.





Ground Floor



First Floor

Total floor area 125.2 m² (1,347 sq.ft.) approx

This floor plan is for illustrative purposes only. It is not drawn to scale. Any measurements, floor areas (including any total floor area), openings and orientation are approximate. No details are guaranteed, they cannot be relied upon for any purpose and they do not form part of any agreement. No liability is taken for any error, omission or misstatement. A party must rely upon its own inspection(s). Powered by www.propertybox.io



To view this property please contact Connells on

T 01865 748 448
E cowley@connells.co.uk

60 Between Towns Road
 OXFORD OX4 3LR

EPC Rating: Council Tax
 Awaited Band: E

view this property online connells.co.uk/Property/COW310832

Tenure: Freehold



1. MONEY LAUNDERING REGULATIONS Intending purchasers will be asked to produce identification documentation at a later stage and we would ask for your co-operation in order that there will be no delay in agreeing the sale. 2. These particulars do not constitute part or all of an offer or contract. 3. The measurements indicated are supplied for guidance only and as such must be considered incorrect. Potential buyers are advised to recheck measurements before committing to any expense. 4. We have not tested any apparatus, equipment, fixtures, fittings or services and it is in the buyers interest to check the working condition of any appliances.

Connells Residential is registered in England and Wales under company number 1489613, Registered Office is Cumbria House, 16-20 Hockliffe Street, Leighton Buzzard, Bedfordshire, LU7 1GN. VAT Registration Number is 500 2481 05.

See all our properties at www.connells.co.uk | www.rightmove.co.uk | www.zoopla.co.uk

Property Ref: COW310832 - 0002