



Connells

St. Marks Road
Salisbury



Property Description

Situated on the highly regarded St Mark's Road, this elegant three-bedroom period townhouse offers well-proportioned accommodation arranged over three floors and private rear garden. Located inside Salisbury's ring road within walking distance to the City Centre.

Entrance Hall

Door to dining room and lounge, stairs to first floor landing.

Lounge

11' 11" into bay x 11' 4" (3.63m into bay x 3.45m)

Feature chimney breast, bay window to front aspect.

Dining Room

14' 9" x 11' 9" (4.50m x 3.58m)

Feature chimney breast, door to kitchen, under stair storage.

Kitchen

12' 5" x 8' 5" (3.78m x 2.57m)

Comprising wall and base units with work surfaces over, drainer sink unit with mixer taps, space for three appliances, space for cooker unit, door to rear garden, dual aspect to side and rear.

First Floor Landing

Access to bedroom two and three, bathroom, storage cupboard and stairs to second floor.

Bedroom Two

11' 11" x 14' 3" (3.63m x 4.34m)

This bedroom has a partition wall currently in place, with the two rooms measurements being 11,11 x 6,09 and 11,11 x 7,08. Front aspect.

Bedroom Three

11' 11" x 9' 7" (3.63m x 2.92m)

Rear aspect.

Bathroom

Comprising a panel enclosed bath with shower over, wash hand basin, WC, storage cupboards.

Second Floor

Bedroom One

12' 2" x 13' 6" (3.71m x 4.11m)

Front aspect.

Outside

Rear Garden

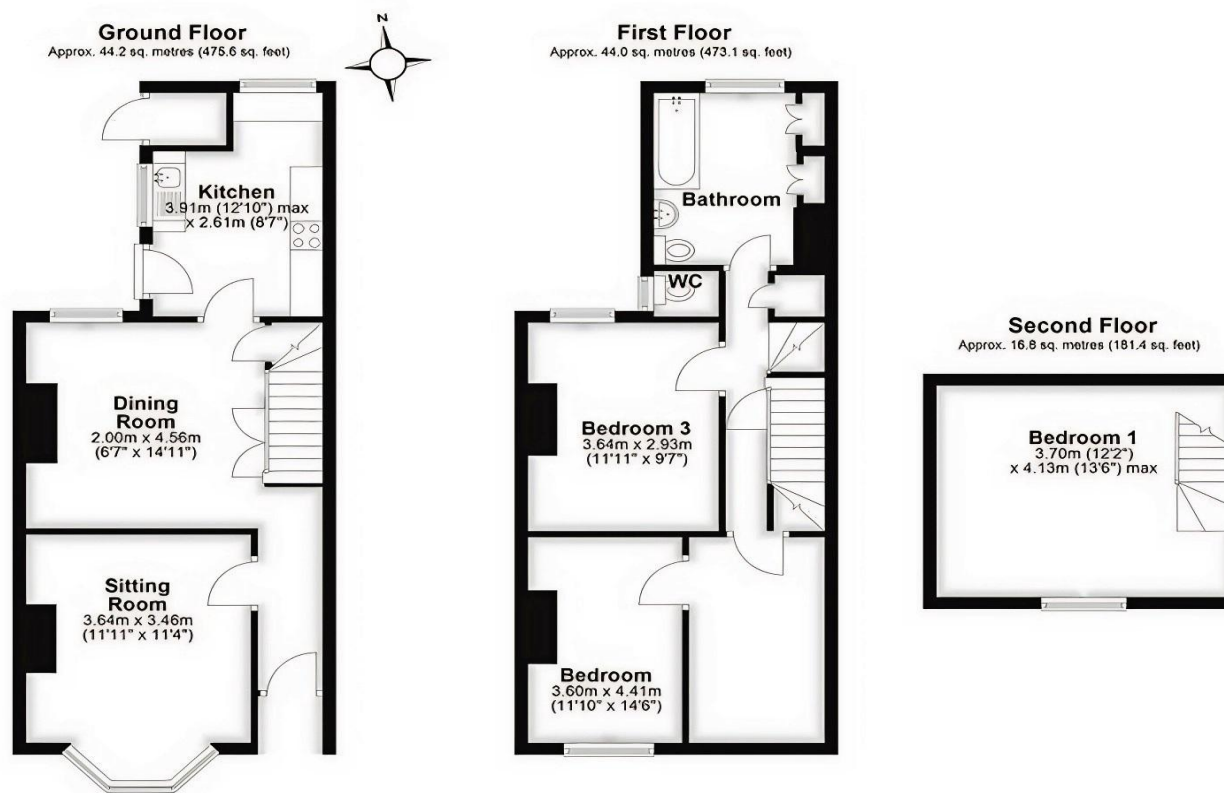
An enclosed garden laid mainly to lawn, a raised decked seating area to the rear offers a ideal place to relax and entertain. With mature shrubs, planted borders and gravelled seating area.

Parking

On street permit parking to the front.







Total area: approx. 105.0 sq. metres (1130.1 sq. feet)

To view this property please contact Connells on

T 01722 328 562

E salisbury@connells.co.uk

46-50 Castle Street
Salisbury SP1 3TS

EPC Rating: D Council Tax
Band: D

Tenure: Freehold

view this property online connells.co.uk/Property/SAL308491



1. MONEY LAUNDERING REGULATIONS Intending purchasers will be asked to produce identification documentation at a later stage and we would ask for your co-operation in order that there will be no delay in agreeing the sale. 2. These particulars do not constitute part or all of an offer or contract. 3. The measurements indicated are supplied for guidance only and as such must be considered incorrect. Potential buyers are advised to recheck measurements before committing to any expense. 4. We have not tested any apparatus, equipment, fixtures, fittings or services and it is in the buyers interest to check the working condition of any appliances.

Connells Residential is registered in England and Wales under company number 1489613, Registered Office is Cumbria House, 16-20 Hockliffe Street, Leighton Buzzard, Bedfordshire, LU7 1GN. VAT Registration Number is 500 2481 05.

See all our properties at www.connells.co.uk | www.rightmove.co.uk | www.zoopla.co.uk

Property Ref: SAL308491 - 0003