





## Property Description

A charming One-Bedroom Maisonette situated within the sought-after and private setting of Tisdale Rise, This well-presented one-bedroom maisonette offers an excellent opportunity for first-time buyers, downsizers, or investors alike.

The property features a bright and welcoming living room, alongside a separate kitchen providing practical space for everyday cooking. The bathroom is fitted with both bath and shower facilities, catering to convenience and comfort. The generously sized double bedroom offers ample room for furnishings and storage, creating a peaceful retreat within the home.

Externally, the property benefits from a picturesque and private front lawn, perfect for relaxing or enjoying the outdoor space. There is also allocated parking for one car, adding to the ease of living.

Tisdale Rise is known for its friendly, neighbourly community atmosphere, while being just a short drive from Kenilworth town centre, with its excellent range of amenities, shops, and transport links.

## Living Room

Spacious living room with useful storage area off the main front door and overlooking front aspect of property onto quiet cul-de-sac and front lawn

## Kitchen

Separate kitchen with plenty of cupboard and storage space

## Main Bathroom

A 3 piece bathroom with bath and shower facilities including wc and wash basin

## Bedroom

Generously sized bedroom overlooking rear aspect of the property

## Garden

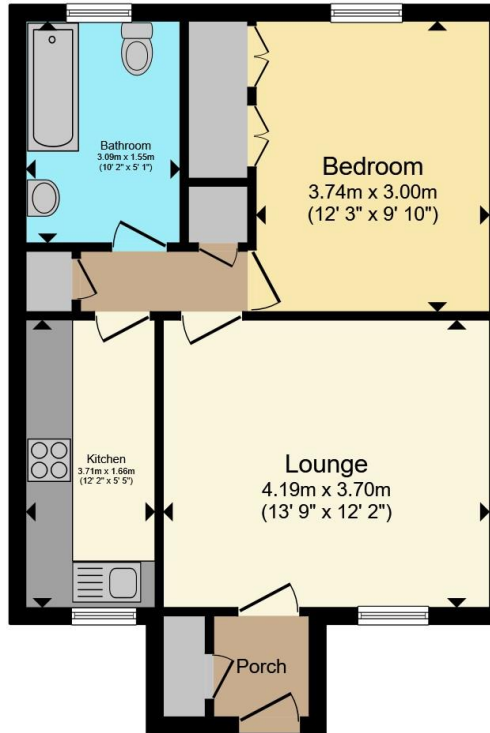
Beautifully kept private front garden area, perfect for sitting out in a quiet spot within the development

## Allocated Parking

Allocated parking space for 1 car







Total floor area 47.5 m<sup>2</sup> (511 sq.ft.) approx

This floor plan is for illustrative purposes only. It is not drawn to scale. Any measurements, floor areas (including any total floor area), openings and orientation are approximate. No details are guaranteed, they cannot be relied upon for any purpose and they do not form part of any agreement. No liability is taken for any error, omission or misstatement. A party must rely upon its own inspection(s). Powered by [www.propertybox.io](http://www.propertybox.io)



To view this property please contact Atkinson Stilgoe on

**T 01926 857 461**  
**E [kenilworth@atkinsonstilgoe.co.uk](mailto:kenilworth@atkinsonstilgoe.co.uk)**

29 Warwick Road

Kenilworth, Leamington Spa

We are awaiting further details about the term of the lease. For further information please contact the branch. Please note additional fees could be incurred for items such as Leasehold packs.

**view this property online [atkinsonstilgoe.co.uk/Property/KEN305561](http://atkinsonstilgoe.co.uk/Property/KEN305561)**

EPG Rating:  
Awaited

Council Tax  
Band: B

Service Charge: Ask  
Agent

Ground Rent:  
Ask Agent



Tenure: Leasehold



1. MONEY LAUNDERING REGULATIONS Intending purchasers will be asked to produce identification documentation at a later stage and we would ask for your co-operation in order that there will be no delay in agreeing the sale. 2. These particulars do not constitute part or all of an offer or contract. 3. The measurements indicated are supplied for guidance only and as such must be considered incorrect. Potential buyers are advised to recheck measurements before committing to any expense. 4. We have not tested any apparatus, equipment, fixtures, fittings or services and it is in the buyers interest to check the working condition of any appliances.

Atkinson Stilgoe is a trading name of Connells Residential which is registered in England and Wales under company number 1489613, Registered Office is Cumbria House, 16-20 Hockliffe Street, Leighton Buzzard, Bedfordshire, LU7 1GN. VAT Registration Number is 500 2481 05.

See all our properties at [www.atkinsonstilgoe.co.uk](http://www.atkinsonstilgoe.co.uk) | [www.rightmove.co.uk](http://www.rightmove.co.uk) | [www.zoopla.co.uk](http://www.zoopla.co.uk)

Property Ref: KEN305561 - 0005