



**Taylor Close, Waterlooville PO7 5GE**

**welcome to**

## **Taylor Close, Waterloooville**

Five bed detached home in quiet cul-de-sac near Stakes Rd, with driveway, garage and private garden. Lounge, modern kitchen/diner, utility, WC, ground floor bed/office, en-suite to master bed. Close to amenities, schools and transport.

### **Entrance Hall**

Carpet flooring, radiator.

### **Lounge**

Double glazed window to front aspect with wooden shutters. Carpet flooring, radiator.

### **Study / Bedroom 5**

Double glazed window to front aspect. Carpet flooring, radiator.

### **Kitchen / Diner**

Double glazed window to rear aspect. Double glazed doors to rear garden. Range of wall and base units with work surface over incorporating one and a half bowl sink unit. Built-in low level oven and gas hob with extractor hood over. Space for fridge/freezer and dishwasher, radiator, vinyl flooring. Door to utility room and WC.

### **Utility Room**

Double glazed door to rear garden. Space for washing machine and tumble dryer. Radiator. Door to cloakroom.

### **Cloakroom**

Double glazed window to side aspect. Low level WC, wash hand basin, vinyl flooring, radiator.

### **First Floor Landing**

Double glazed window to side aspect. Airing cupboard, carpet flooring, access to loft space.

### **Bedroom One**

Double glazed window to rear aspect with shutters. Carpet flooring, radiator. Door to en-suite.

### **En-Suite**

Double glazed window to rear aspect. Shower cubicle, low level WC, pedestal wash hand basin. Vinyl flooring, radiator.

### **Bedroom Two**

Double glazed window to front aspect with shutters. Carpet flooring, radiator.

### **Bedroom Three**

Double glazed window to front aspect with shutters. Carpet flooring, radiator.

### **Bedroom Four**

Double glazed window to front aspect with shutters. Carpet flooring, radiator.

### **Bathroom**

Double glazed window to rear aspect. Panel enclosed bath with shower over, low level WC, pedestal wash hand basin. Vinyl flooring, radiator.

### **Outside**

#### **Front**

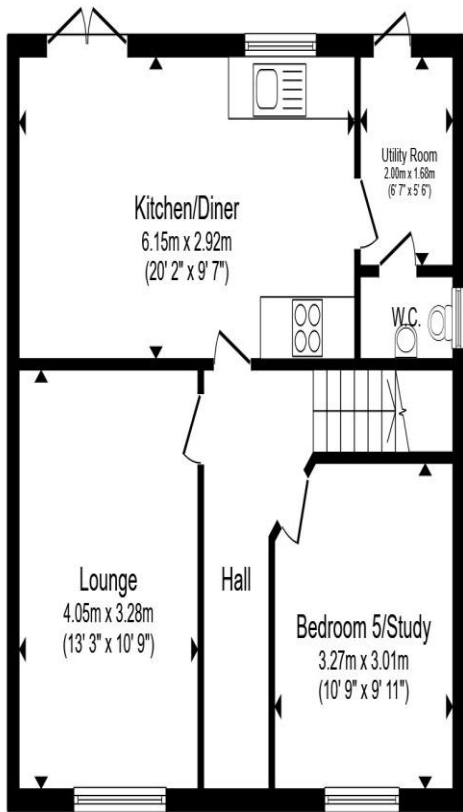
Off road parking for two cars. Garage. Pedestrian gate to rear garden.

#### **Garage**

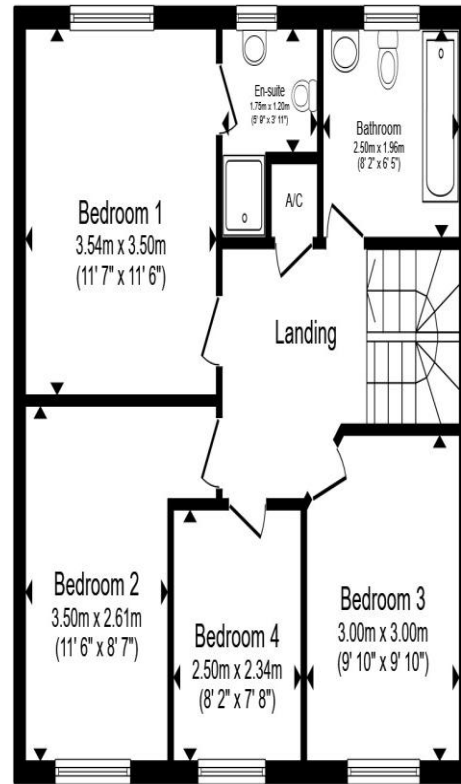
Up and over door, power and light.

#### **Rear Garden**

Laid to lawn and patio. Personal door to garage. Enclosed by panel fencing.



**Ground Floor**



**First Floor**

Total floor area 112.4 m<sup>2</sup> (1,210 sq.ft.) approx

This floor plan is for illustrative purposes only. It is not drawn to scale. Any measurements, floor areas (including any total floor area), openings and orientation are approximate. No details are guaranteed, they cannot be relied upon for any purpose and they do not form part of any agreement. No liability is taken for any error, omission or misstatement. A party must rely upon its own inspection(s). Powered by [www.propertybox.io](http://www.propertybox.io)



**welcome to**  
**Taylor Close,**  
**Waterlooville**

- Five Bed Detached House
- Cul-De-Sac Location
- Driveway & Garage
- Utility & WC
- En-Suite to Master Bed

Tenure: Freehold EPC Rating: B  
Council Tax Band: F

guide price

**£475,000**



**view this property online** [fox-and-sons.co.uk/Property/WLV109769](https://fox-and-sons.co.uk/Property/WLV109769)



Property Ref:  
WLV109769 - 0002

1. MONEY LAUNDERING REGULATIONS Intending purchasers will be asked to produce identification documentation at a later stage and we would ask for your co-operation in order that there is no delay in agreeing the sale. 2. These particulars do not constitute part or all of an offer or contract. 3. The measurements indicated are supplied for guidance only and as such must be considered incorrect. Potential buyers are advised to recheck measurements before committing to any expense. 4. We have not tested any apparatus, equipment, fixtures or services and it is in the buyers interest to check the working condition of any appliances. 5. Where an EPC, or a Home Report (Scotland only) is held for this property, it is available for inspection at the branch by appointment. If you require a printed version of a Home Report, you will need to pay a reasonable production charge reflecting printing and other costs. 6. We are not able to offer an opinion either written or verbal on the content of these reports and this must be obtained from your legal representative. 7. Whilst we take care in preparing these reports, a buyer should ensure that his/her legal representative confirms as soon as possible all matters relating to title including the extent and boundaries of the property and other important matters before exchange of contracts.

Fox & Sons is a trading name of Sequence (UK) Limited which is registered in England and Wales under company number 4268443, Registered Office is Cumbria House, 16-20 Hockliffe Street, Leighton Buzzard, Bedfordshire, LU7 1GN. VAT Registration Number is 500 2481 05.

fox & sons



**023 9226 2447**



[Waterlooville@fox-and-sons.co.uk](mailto:Waterlooville@fox-and-sons.co.uk)



81B London Road, WATERLOOVILLE,  
Hampshire, PO7 7ES



**[fox-and-sons.co.uk](https://fox-and-sons.co.uk)**