

SNELLERS

ESTATE AGENTS



Sonning Gardens, TW12

£425,000

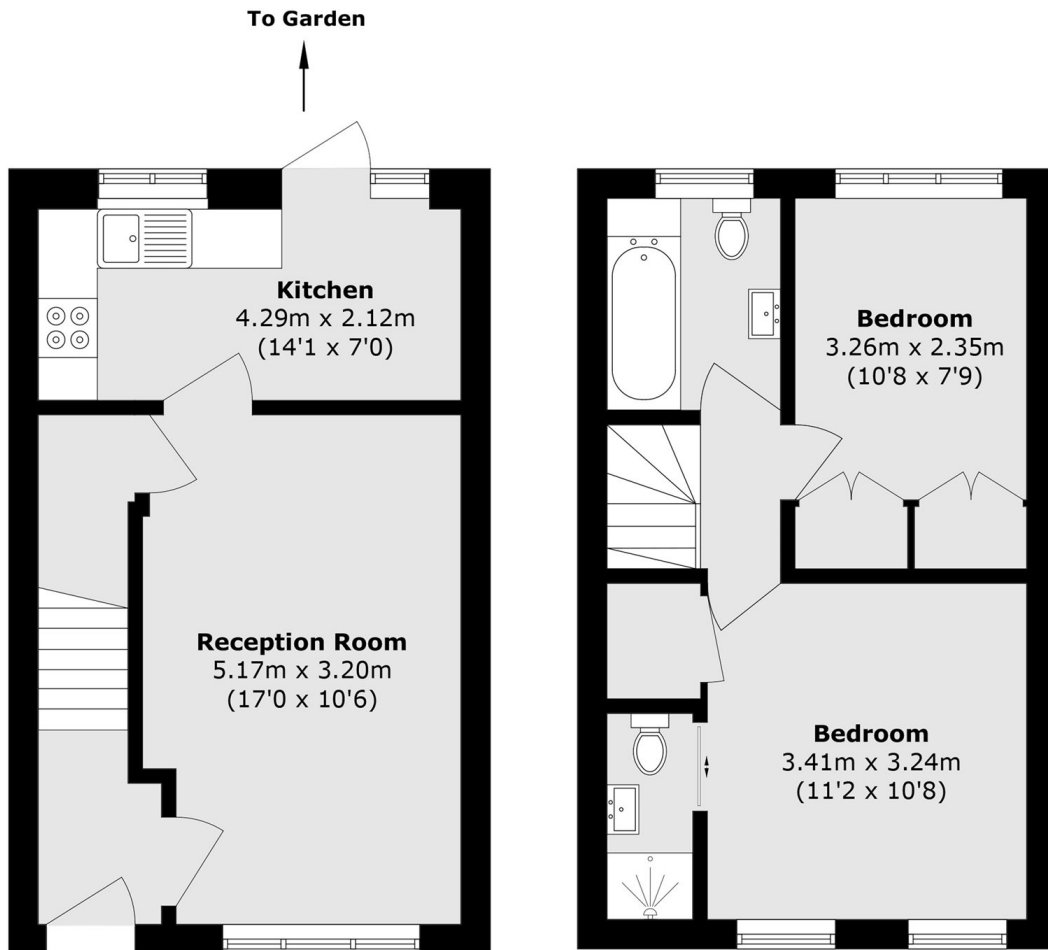
A beautifully presented, two double bedroom two bathroom family home including allocated parking, a private garden and the added bonus of no onward chain. The property would suit first time buyers, professionals, families or investors.

Sonning Gardens is ideally located for a number of schools and the recreational amenities of Hampton Common and Hatherop Park. The property is conveniently positioned for a local Sainsbury's Superstore, Hampton Station, Hampton Pool and Royal Bushy Park.

- Two Double Bedrooms • Two Bathrooms • Private Garden •
- Quiet Cul-De-Sac • Allocated Parking • No Chain •

SNELLERS

ESTATE AGENTS



Ground Floor

First Floor

Total area (approx.): 62.8 sq. m (675.9 sq. ft)

Snellers Hampton Hill Sales
197-201 High Street
Hampton Hill
TW12 1NL
020 8783 0083
hamptonsales@snellers.co.uk

Energy Rating: We aim to make our particulars both accurate and reliable. However they are not guaranteed; nor do they form part of an offer or contract. If you require clarification on any points then please contact us, especially if you're traveling some distance to view. Please note that appliances and heating systems have not been tested and therefore no warranties can be given as to their good working order