



Newlay Wood Avenue, Horsforth Leeds LS18 4LN

welcome to

Newlay Wood Avenue, Horsforth Leeds

'Guide Price £270,000 - £280,000' Offered with no onward chain, this 2 double bedroom dormer bungalow offers flexible living accommodation with great potential. Featuring a bay-fronted lounge, fitted kitchen, dining area & a spacious first floor bedroom, plus well-kept gardens, driveway and garage.



Newlay Wood Avenue

Offered with no onward chain, this two double bedroom dormer bungalow is situated in a popular Horsforth location, close to local amenities and excellent transport links. Sure to appeal to a wide range of buyers, the property offers fantastic potential and versatile living accommodation, briefly comprising: a fitted kitchen, dining area, lounge with bay window, double bedroom, bathroom, and separate WC to the ground floor. The first floor provides a further generously sized double bedroom.

Externally, the property benefits from well-stocked and spacious front and rear gardens, along with a gated driveway and garage, offering ample off-street parking and storage. Early internal viewing is highly recommended to fully appreciate the space and potential on offer.

Ground Floor

Kitchen

An external side door opens into the kitchen, which is fitted with a range of wall and base units with work surfaces over, a stainless steel sink unit with mixer tap, and tiled walls. There is plumbing for a washing machine, space for a freestanding fridge freezer and cooker, as well as a wall-mounted boiler. Window to the rear with views over the garden. An internal door leads through to...

Inner Hallway

The hallway provides access to all remaining ground floor rooms.

Dining Room

A versatile space, ideal for use as a dining room, featuring a radiator, windows to the front and side, and stairs rising to the first floor bedroom.

Lounge

A lovely spacious reception room with radiator and bay window to the front with lovely views.

Bedroom

A double bedroom to the ground floor with radiator and window to the rear

Bathroom

The bathroom comprises a fitted bath with overhead shower, vanity sink unit, tiled walls and window.

Separate Wc

low flush wc and window

First Floor

Bedroom

A great sized double bedroom to the first floor offering a range of fitted wardrobes and drawers, radiator and window to the rear with lovely views.

Outside

To the front of the property, there is excellent kerb appeal, with a mature and well-stocked garden. A gated driveway to the side provides off-street parking.

To the rear, there is an attractive and well-maintained garden, predominantly laid to lawn with mature borders, paved seating areas, fenced boundaries, and a greenhouse.

Garage

The property benefits from a garage at the end of the driveway providing ample storage.



view this property online williamhbrown.co.uk/Property/HFT107576



welcome to

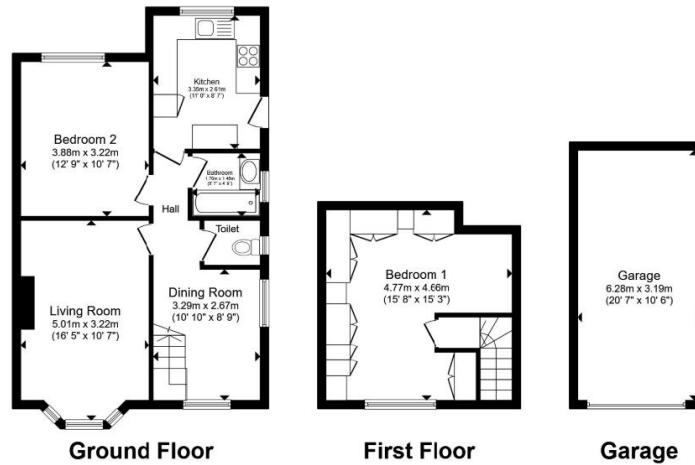
Newlay Wood Avenue, Horsforth Leeds

- No onward chain
- Two double bedroom dormer bungalow
- Versatile living accommodation with great potential
- Spacious first floor bedroom
- Well-maintained gardens

Tenure: Freehold EPC Rating: D
Council Tax Band: C

guide price

£270,000 - £280,000



Total floor area 95.6 m² (1,029 sq.ft.) approx
This floor plan is for illustrative purposes only. It is not drawn to scale. Any measurements, floor areas (including any total floor area), openings and orientation are approximate. No details are guaranteed, they cannot be relied upon for any purpose and they do not form part of any agreement. No liability is taken for any error, omission or misstatement. A party must rely upon its own inspection(s). Powered by www.propertybox.io


william
h brown



Please note the marker reflects the
postcode not the actual property

view this property online [williamhbrown.co.uk/Property/HFT107576](https://www.williamhbrown.co.uk/Property/HFT107576)



Property Ref:
HFT107576 - 0004

1. MONEY LAUNDERING REGULATIONS Intending purchasers will be asked to produce identification documentation at a later stage and we would ask for your co-operation in order that there is no delay in agreeing the sale. 2. These particulars do not constitute part or all of an offer or contract. 3. The measurements indicated are supplied for guidance only and as such must be considered incorrect. Potential buyers are advised to recheck measurements before committing to any expense. 4. We have not tested any apparatus, equipment, fixtures or services and it is in the buyers interest to check the working condition of any appliances. 5. Where an EPC, or a Home Report (Scotland only) is held for this property, it is available for inspection at the branch by appointment. If you require a printed version of a Home Report, you will need to pay a reasonable production charge reflecting printing and other costs. 6. We are not able to offer an opinion either written or verbal on the content of these reports and this must be obtained from your legal representative. 7. Whilst we take care in preparing these reports, a buyer should ensure that his/her legal representative confirms as soon as possible all matters relating to title including the extent and boundaries of the property and other important matters before exchange of contracts.

William H Brown is a trading name of Sequence (UK) Limited which is registered in England and Wales under company number 4268443, Registered Office is Cumbria House, 16-20 Hockliffe Street, Leighton Buzzard, Bedfordshire, LU7 1GN. VAT Registration Number is 500 2481 05.


william h brown



0113 258 3476



Horsforth@williamhbrown.co.uk



110-112 New Road Side, Horsforth, Leeds,
West Yorkshire, LS18 4QB



[williamhbrown.co.uk](https://www.williamhbrown.co.uk)