



Junction Way, Thrapston  
**£200,000 Freehold**

**Sharman  
Quinney**

# Key Features



- End Terrace Modern Home -Two Double Bedrooms
- Situated in a quiet location
- No Onward Chain
- Ideal Starter Home
- Ground floor cloaks/w.c., fitted kitchen

In brief the property is arranged over two floors and comprises: - Hallway with cupboard, cloakroom/w.c, lounge, /diner, attractive fitted kitchen incorporating with some fitted appliances including Fridge Freezer, oven, stainless steel hob. Stainless steel sink. SPACE for washing machine, work tops. The first floor offers Two Double bedrooms and a family three-piece bathroom, with bath and a shower over.

A secure, enclosed rear garden with timber fencing, landscaped to patio and paving with grass inlay and timber tool shed. Gated access to the side. Viewings are highly recommended.

Entrance Hall: - Enter via double glazed door, stairs rising to the first landing. The flooring is carpeted in grey. There's a useful storage cupboard, downstairs W.c. Doorways leads from



the hallway to the lounge /dining room and further door leads to the kitchen.

The Lounge/Dining Room: - Double glazed window and French doors to rear elevation. The kitchen, is fitted with a modern range of stylish wall and base units with works surfaces over, inset stainless steel sink and drainer, built in oven with four ring gas hob and extractor over, integrated fridge/freezer, space and plumbing for washing machine, double glazed window to front elevation.

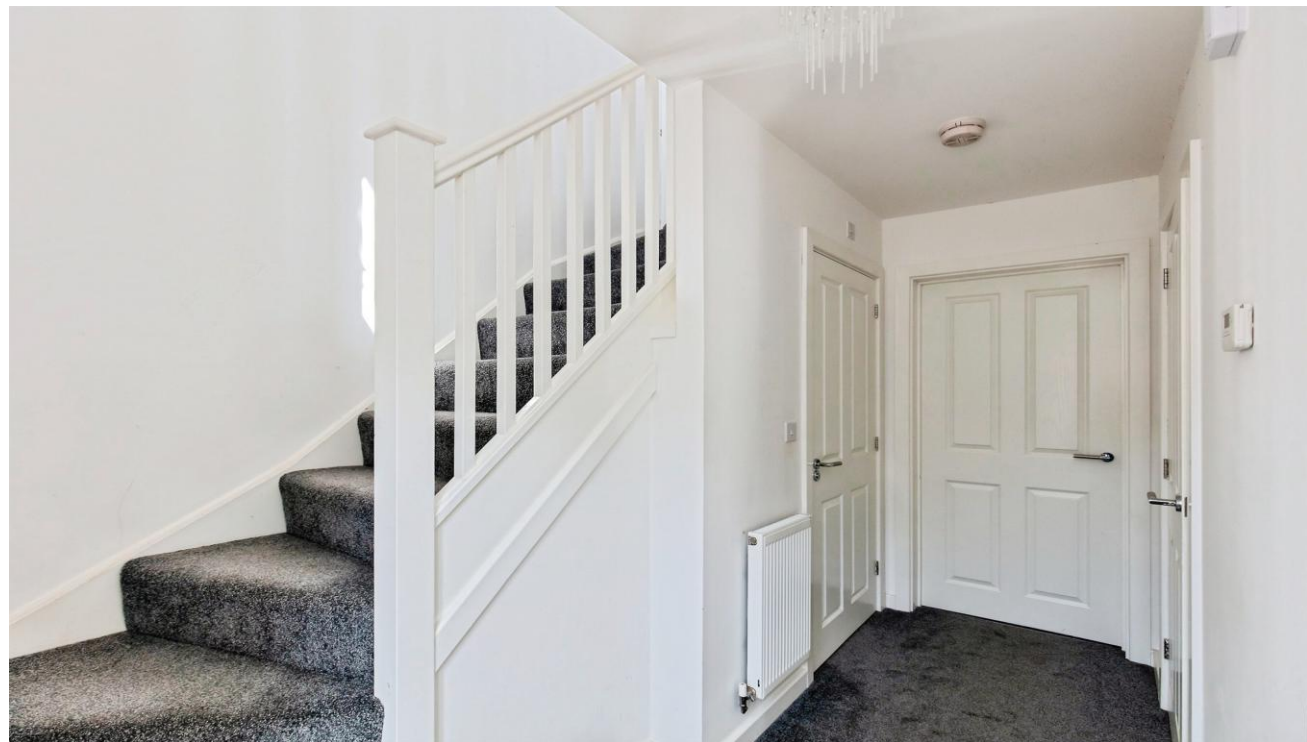
The first Floor Landing is a good space with built in airing cupboard housing the boiler. To the ceiling, there's a loft access and doors to rooms. Bedroom One features a double-glazed window to rear elevation, and double width fitted wardrobe. Bedroom Two has a window to rear elevation.

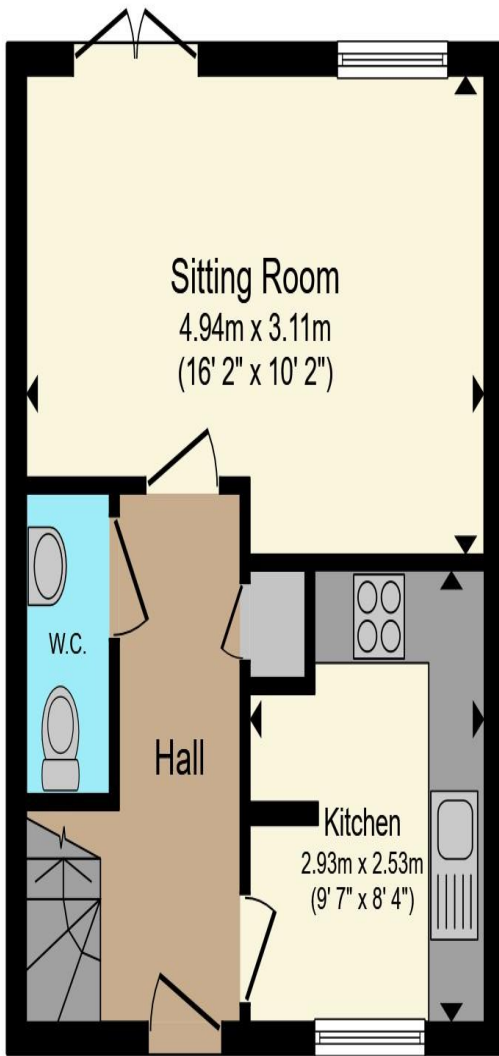
Bathroom: - Fitted with a three-piece suite comprising of low-level, w.c, wash hand basin, bath with shower over and glass shower screen, tiled splashbacks, double glazed obscured window to front elevation.

#### Outside

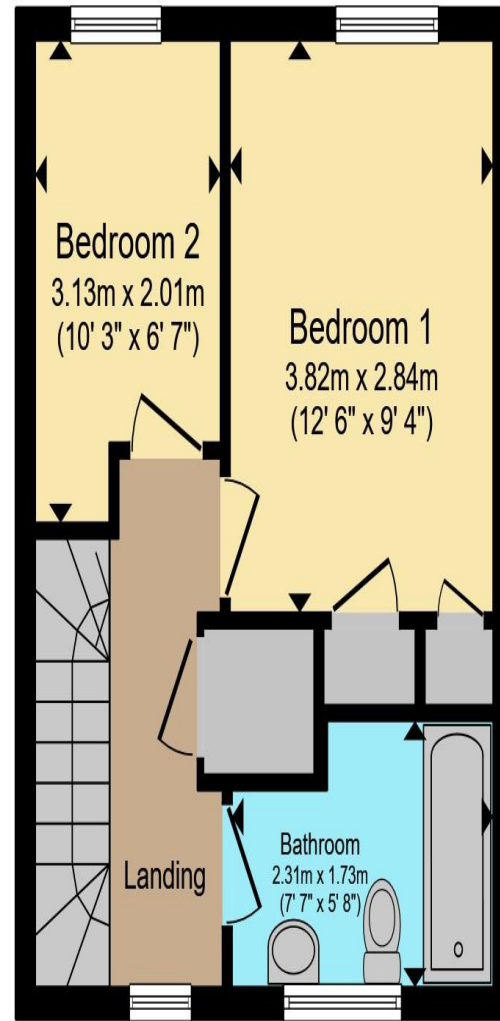
Front: - Small but pleasant open format front garden

Rear: - The rear garden is enclosed with timber fencing, patio area set immediately to the rear of the property with landscaping to paved patio and paving leading to the gate and to a timber store shed, with small, grassed inlay in between. The gated access to the rear gives access toward the dedicated numbered parking bay, in the small





**Ground Floor**



**First Floor**

Total floor area 60.6 m<sup>2</sup> (653 sq.ft.) approx

This floor plan is for illustrative purposes only. It is not drawn to scale. Any measurements, floor areas (including any total floor area), openings and orientation are approximate. No details are guaranteed, they cannot be relied upon for any purpose and they do not form part of any agreement. No liability is taken for any error, omission or misstatement. A party must rely upon its own inspection(s). Powered by [www.propertybox.io](http://www.propertybox.io)

**Sharman  
Quinney**

carpark for residents immediately to the rear.

**Measurements**

**Ground Floor**

Reception Lounge /Dining - 16'2" x 10' 2" (4.94m x 3.11m)

Kitchen- 7'8" x 6' 6" (2.39m x 2.04m)

Guest Cloaks/ w.c.

**First Floor**

Bedroom One 12' 4" x 9' 2" (3.80m x 2.83m to front of double wardrobe )

Bedroom Two 10' 8" x 6' 5" (3.32m x 2.01m)

Bathroom -

**Agents Note**

Freehold. Service charge to the development applies. Please contact us for more information.

To view this property call Sharman Quinney on:  
**01832 735589**

# Selling your property?

Contact us to arrange a **FREE** home valuation.

 01832 735589

 16 High Street, THRAPSTON, Northamptonshire,  
NN14 4JH

 thrapston@sharmanquinney.co.uk

 [www.sharmanquinney.co.uk](http://www.sharmanquinney.co.uk)



 SCAN ME



Sharman Quinney Holdings Limited is registered in England and Wales under company number 4174227, Registered Office is Cumbria House, 16-20 Hockliffe Street, Leighton Buzzard, Bedfordshire, LU7 1GN. VAT Registration Number is 500 2481 05.

1: These particulars do not constitute part or all of an offer or contract. 2: The measurements indicated are supplied for guidance only and as such must be considered incorrect. 3: Potential buyers are advised to recheck the measurements before committing to any expense. 4: Sharman Quinney has not tested any apparatus, equipment, fixtures, fittings or services and it is the buyers interests to check the working condition of any appliances. 5: Sharman Quinney has not sought to verify the legal title of the property and buyers must obtain verification from their legal representative. 6: Intending purchasers will be asked to produce identification documentation at a later stage and we would ask your co-operation in order that there will be no delay in agreeing the sale. Ref: THR103832 - 0002

