



## The Paddock, Stourport-On-Severn DY13 8PA

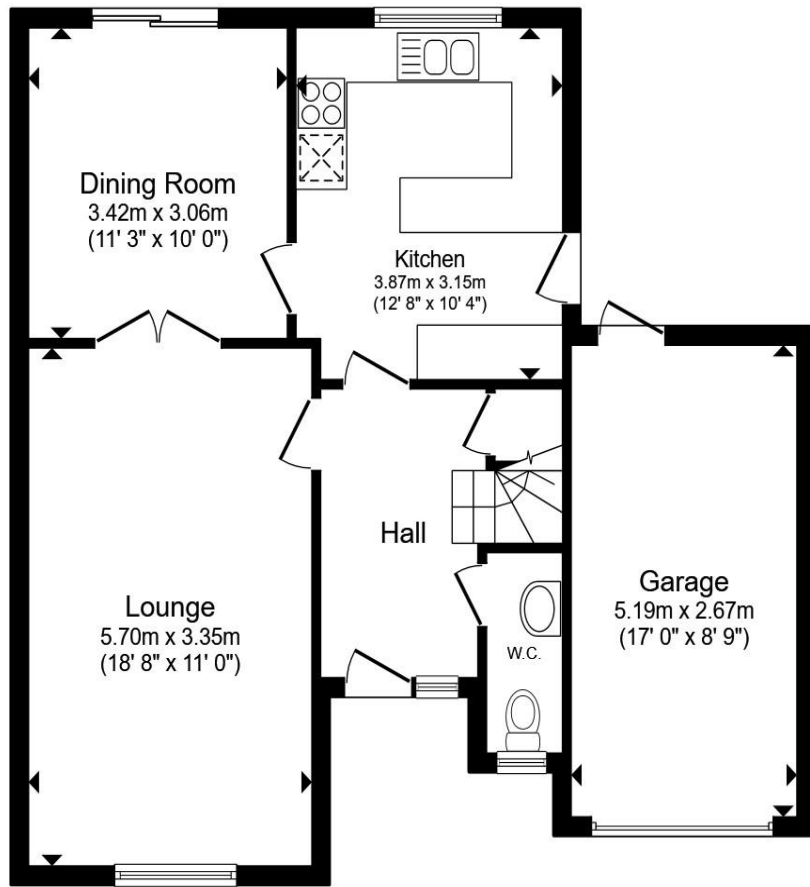
Not for marketing purposes. INTERNAL USE ONLY

**welcome to**

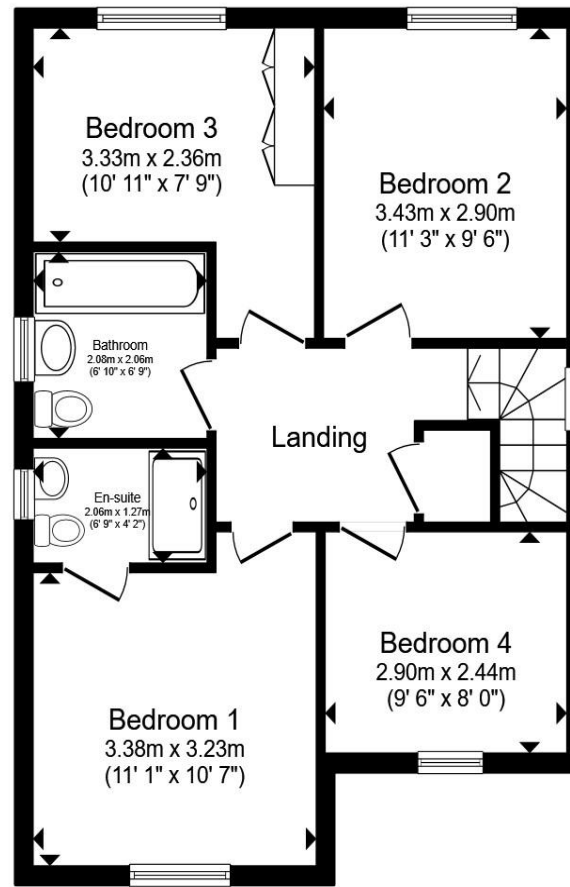
**The Paddock, Stourport-On-Severn**

**\*\*\*FOUR BEDROOM EXECUTIVE DETACHED FAMILY HOME\*\*\*BEAUTIFUL COUNTRYSIDE VIEWS TO THE SIDE AND REAR\*\*\*MASTER BEDROOM WITH AN EN-SUITE\*\*\*QUIET CUL-DE-SAC LOCATION ON A PRIVATE DRIVE\*\*\*EXCELLENT CONDITION\*\*\***





**Ground Floor**



**First Floor**

- Approach**
- Entrance Hallway**
- Cloakroom/WC**
- Lounge**
- Dining Room**
- Kitchen**
- Landing**
- Bedroom One**
- En-Suite**
- Bedroom Two**
- Bedroom Three**
- Bedroom Four**
- Bathroom**
- Rear Garden**
- Garage**
- Agent Note**

Total floor area 121.5 m<sup>2</sup> (1,308 sq.ft.) approx

This floor plan is for illustrative purposes only. It is not drawn to scale. Any measurements, floor areas (including any total floor area), openings and orientation are approximate. No details are guaranteed, they cannot be relied upon for any purpose and they do not form part of any agreement. No liability is taken for any error, omission or misstatement. A party must rely upon its own inspection(s). Powered by [www.propertybox.io](http://www.propertybox.io)



welcome to

## The Paddock, Stourport-On-Severn

- FOUR BEDROOM EXECUTIVE DETACHED FAMILY HOME
- BEAUTIFUL COUNTRYSIDE VIEWS TO SIDE AND REAR
- QUIET CUL-DE-SAC LOCATION ON A PRIVATE DRIVE
- MASTER BEDROOM WITH AN EN-SUITE
- EXCELLENT CONDITION

Tenure: Freehold EPC Rating: Awaited  
Council Tax Band: E

offers over

**£475,000**



Please note the marker reflects the  
postcode not the actual property

check out more properties at [shipways.co.uk](http://shipways.co.uk)



Property Ref:  
KMS115991 - 0004

1. MONEY LAUNDERING REGULATIONS Intending purchasers will be asked to produce identification documentation at a later stage and we would ask for your co-operation in order that there is no delay in agreeing the sale. 2. These particulars do not constitute part or all of an offer or contract. 3. The measurements indicated are supplied for guidance only and as such must be considered incorrect. Potential buyers are advised to recheck measurements before committing to any expense. 4. We have not tested any apparatus, equipment, fixtures or services and it is in the buyers interest to check the working condition of any appliances. 5. Where an EPC, or a Home Report (Scotland only) is held for this property, it is available for inspection at the branch by appointment. If you require a printed version of a Home Report, you will need to pay a reasonable production charge reflecting printing and other costs. 6. We are not able to offer an opinion either written or verbal on the content of these reports and this must be obtained from your legal representative. 7. Whilst we take care in preparing these reports, a buyer should ensure that his/her legal representative confirms as soon as possible all matters relating to title including the extent and boundaries of the property and other important matters before exchange of contracts.

**Not for marketing purposes INTERNAL USE ONLY**



**01562 829900**



[kidderminster@shipways.co.uk](mailto:kidderminster@shipways.co.uk)



4 Carlton House, Marlborough Street,  
KIDDERMINSTER, Worcestershire, DY10 1AY



[shipways.co.uk](http://shipways.co.uk)