



Fairfield Close, offers over £240,000

- Three Bedrooms
- Semi Detached
- Well Presented
- Garage to rear
- EPC Rating: C



 3  1  1



About the property

Situated on the sought-after Fairfield Close in the heart of Blackwood, this well presented three-bedroom semi-detached property offers an excellent opportunity for families, first-time buyers, or those looking to upsize into a spacious and conveniently located home. Ideally positioned within close proximity to Blackwood High Street, the property benefits from easy access to a wide range of local amenities, shops, cafés, schools, and transport links, making it perfectly suited for modern day living.

The accommodation throughout has been maintained to a high standard and offers a welcoming and practical layout. The ground floor provides bright and spacious living accommodation with a comfortable lounge area, ideal for relaxing or entertaining, alongside a well-appointed kitchen and dining space designed for everyday family life. Upstairs, the property boasts three well-proportioned bedrooms along with a family bathroom, offering versatile accommodation for growing families or those working from home.

Externally, the property continues to impress with generous outdoor space including a brick-built summer house, perfect for use as a home office, gym, entertaining area, or additional storage space. A spacious garage further enhances the practicality of the home, providing ample storage or secure parking options.

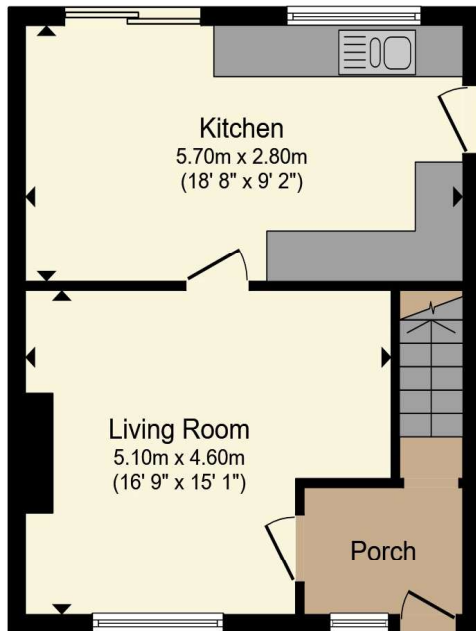


Accommodation

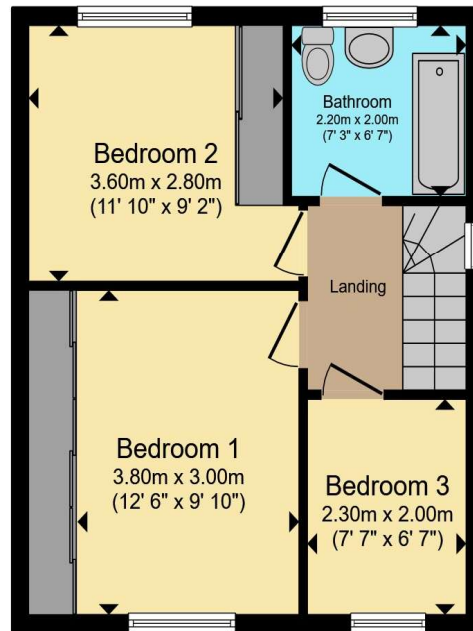
01495 231199

blackwood@peteralan.co.uk

Floorplan



Ground Floor



First Floor

Total floor area 75.9 m² (817 sq.ft.) approx

This floor plan is for illustrative purposes only. It is not drawn to scale. Any measurements, floor areas (including any total floor area), openings and orientation are approximate. No details are guaranteed, they cannot be relied upon for any purpose and they do not form part of any agreement. No liability is taken for any error, omission or misstatement. A party must rely upon its own inspection(s). Powered by www.propertybox.io



Important Information

Note while we endeavour to make our sales details accurate and reliable, if there is any point which is of particular interest to you, please contact the office and we will be pleased to confirm the position for you. We have not personally tested any apparatus, equipment, fixtures, fittings or services and cannot verify they are in working order or fit for their purposes. Nothing in these particulars is intended to indicate that carpets or curtains, furnishings or fittings, electrical goods (whether wired or not). Gas fires or light fittings or any other fixtures not expressly included form part of the property offered for sale. This computer generated Floorplan, if applicable, is intended as a general guide to the layout and design of the property. It is not to scale and should not be relied upon for dimensions. Tenure: We cannot confirm the tenure of the property as we have not had access to the legal documents. The buyer is advised to obtain verification from their solicitor or surveyor.

Peter Alan Limited is registered in England and Wales under company number 2073153, Registered Office is Cumbria House, 16-20 Hockliffe Street, Leighton Buzzard, Bedfordshire, LU7 1GN. VAT Registration Number is 500 2481 05. For activities relating to regulated mortgages and non-investment insurance contracts, Peter Alan Limited is an appointed representative of Connells Limited which is authorised and regulated by the Financial Conduct Authority. Connells Limited's Financial Services Register number is 302221. Most buy-to-let

