



barnard marcus

Bishops House, Wesley Place, Epsom KT18 5FB

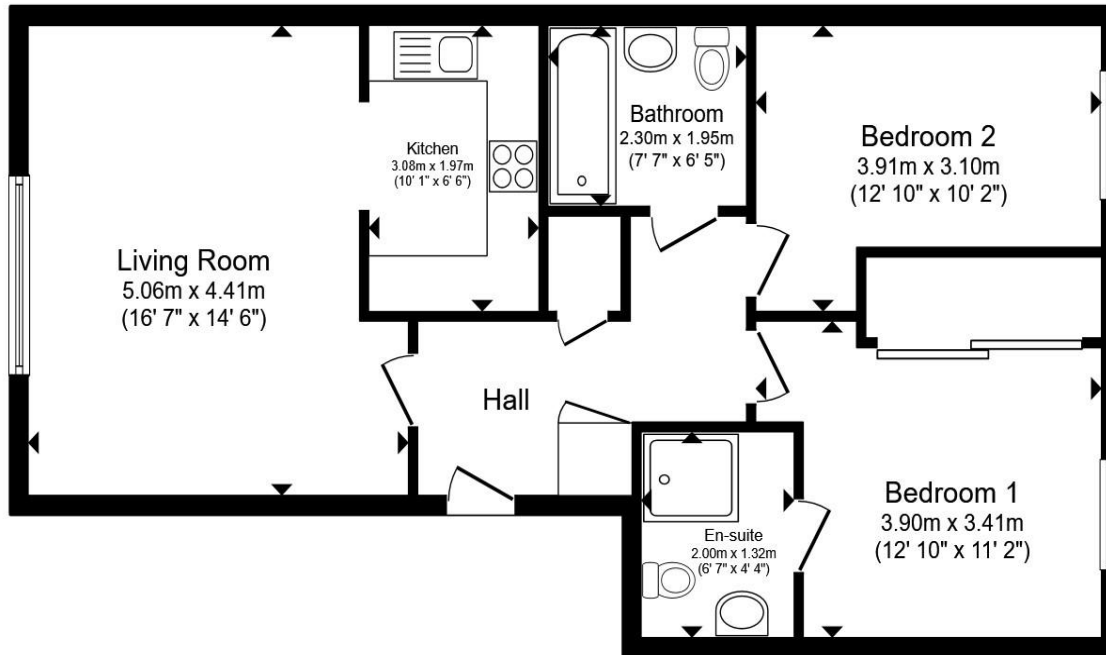


welcome to

Bishops House, Wesley Place, Epsom

A stylish ground floor gem, this modern two bedroom apartment delivers effortless contemporary living just moments from Tattenham Corner station, with allocated parking, secure entry & gas central heating throughout.





Ground Floor

Total floor area 70.9 m² (763 sq.ft.) approx

This floor plan is for illustrative purposes only. It is not drawn to scale. Any measurements, floor areas (including any total floor area), openings and orientation are approximate. No details are guaranteed, they cannot be relied upon for any purpose and they do not form part of any agreement. No liability is taken for any error, omission or misstatement. A party must rely upon its own inspection(s). Powered by www.propertybox.io



This beautifully presented ground floor apartment on Wesley Place offers the perfect blend of modern comfort & everyday convenience.

Built in 2008, the home has been thoughtfully designed to provide contemporary living throughout, making it an ideal choice for first time buyers, downsizers, or investors.

Step inside and you're welcomed by a bright and inviting open plan living space that seamlessly combines the lounge, dining area, and a stylish fitted kitchen complete with integrated appliances. It's a wonderfully sociable layout, perfect for relaxing evenings or entertaining friends. The property features two generous double bedrooms. The primary bedroom enjoys the added luxury of its own en-suite shower room, while a second modern bathroom serves the rest of the home-ideal for guests or busy households. Additional benefits include a secure entry system, gas central heating, & an allocated parking space within a gated rear car park. With over 100 years remaining on the lease, the property offers peace of mind and long term security.

The location is a real highlight. Tattenham Corner station is just a short walk away, providing excellent transport links for commuters. Local amenities are close at hand, and Epsom town centre-with its wide range of shops, restaurants, and services-is conveniently located within approximately four miles.

Stylish, well connected, and ready to move into, this charming apartment is a fantastic opportunity to enjoy modern living.

welcome to

Bishops House, Wesley Place, Epsom

- Ground Floor
- Two Double Bedrooms
- Bathroom & En-Suite
- Modern Fitted Kitchen
- Secure Entry System

Tenure: Leasehold EPC Rating: B

Council Tax Band: D Service Charge: 2160.00

Ground Rent: 250.00

This is a Leasehold property with details as follows; Term of Lease 125 years from 01 Jan 2008. Should you require further information please contact the branch. Please Note additional fees could be incurred for items such as Leasehold packs.

offers over

£325,000



Please note the marker reflects the postcode not the actual property

view this property online [barnardmarcus.co.uk/Property/EPS110217](https://www.barnardmarcus.co.uk/Property/EPS110217)



Property Ref:
EPS110217 - 0003

1. MONEY LAUNDERING REGULATIONS Intending purchasers will be asked to produce identification documentation at a later stage and we would ask for your co-operation in order that there is no delay in agreeing the sale. 2. These particulars do not constitute part or all of an offer or contract. 3. The measurements indicated are supplied for guidance only and as such must be considered incorrect. Potential buyers are advised to recheck measurements before committing to any expense. 4. We have not tested any apparatus, equipment, fixtures or services and it is in the buyers interest to check the working condition of any appliances. 5. Where an EPC, or a Home Report (Scotland only) is held for this property, it is available for inspection at the branch by appointment. If you require a printed version of a Home Report, you will need to pay a reasonable production charge reflecting printing and other costs. 6. We are not able to offer an opinion either written or verbal on the content of these reports and this must be obtained from your legal representative. 7. Whilst we take care in preparing these reports, a buyer should ensure that his/her legal representative confirms as soon as possible all matters relating to title including the extent and boundaries of the property and other important matters before exchange of contracts.

Barnard Marcus is a trading name of Sequence (UK) Limited which is registered in England and Wales under company number 4268443, Registered Office is Cumbria House, 16-20 Hockliffe Street, Leighton Buzzard, Bedfordshire, LU7 1GN. VAT Registration Number is 500 2481 05.



barnard marcus



01372 740911



Epsom@barnardmarcus.co.uk



2 Kings Shade Walk, The Ashley Centre, Epsom, Surrey, KT19 8EB



barnardmarcus.co.uk