



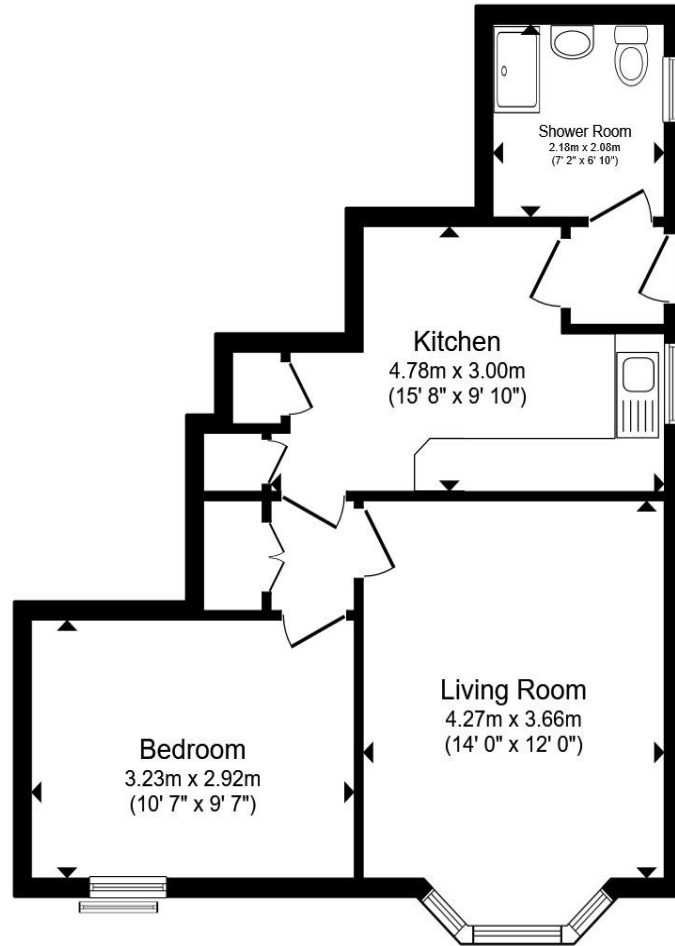
South Elms Silverdale Road, Eastbourne BN20 7EU

welcome to

South Elms Silverdale Road, Eastbourne

A CHAIN FREE one bedroom lower ground floor flat with its own private entrance situated in the sought-after Meads area of Eastbourne. Benefiting from a garage en bloc, communal gardens and a convenient location close to local amenities and the seafront.





Agents Note

Entrance Hall

Lounge

Kitchen

Bedroom

Bathroom

Garage

Communal Gardens

Total floor area 49.9 m² (537 sq.ft.) approx

This floor plan is for illustrative purposes only. It is not drawn to scale. Any measurements, floor areas (including any total floor area), openings and orientation are approximate. No details are guaranteed, they cannot be relied upon for any purpose and they do not form part of any agreement. No liability is taken for any error, omission or misstatement. A party must rely upon its own inspection(s). Powered by www.propertybox.io



welcome to

South Elms Silverdale Road, Eastbourne

- LOWER GROUND FLOOR FLAT
- CHAIN FREE
- GARAGE EN BLOC
- PRIVATE ENTRANCE
- COMMUNAL GARDENS

Tenure: Leasehold EPC Rating: E

Council Tax Band: A Service Charge: 770.00

Ground Rent: 115.00

This is a Leasehold property with details as follows; Term of Lease 129 years from 25 Mar 1977. Should you require further information please contact the branch. Please Note additional fees could be incurred for items such as Leasehold packs.

offers in the region of

£139,950



view this property online fox-and-sons.co.uk/Property/EBN121093



Property Ref:
EBN121093 - 0002

1. MONEY LAUNDERING REGULATIONS Intending purchasers will be asked to produce identification documentation at a later stage and we would ask for your co-operation in order that there is no delay in agreeing the sale. 2. These particulars do not constitute part or all of an offer or contract. 3. The measurements indicated are supplied for guidance only and as such must be considered incorrect. Potential buyers are advised to recheck measurements before committing to any expense. 4. We have not tested any apparatus, equipment, fixtures or services and it is in the buyers interest to check the working condition of any appliances. 5. Where an EPC, or a Home Report (Scotland only) is held for this property, it is available for inspection at the branch by appointment. If you require a printed version of a Home Report, you will need to pay a reasonable production charge reflecting printing and other costs. 6. We are not able to offer an opinion either written or verbal on the content of these reports and this must be obtained from your legal representative. 7. Whilst we take care in preparing these reports, a buyer should ensure that his/her legal representative confirms as soon as possible all matters relating to title including the extent and boundaries of the property and other important matters before exchange of contracts.

Fox & Sons is a trading name of Sequence (UK) Limited which is registered in England and Wales under company number 4268443, Registered Office is Cumbria House, 16-20 Hockliffe Street, Leighton Buzzard, Bedfordshire, LU7 1GN. VAT Registration Number is 500 2481 05.



Please note the marker reflects the postcode not the actual property


fox & sons



01323 410911



Eastbourne@fox-and-sons.co.uk



19 Cornfield Road, EASTBOURNE, East Sussex,
BN21 4QD



fox-and-sons.co.uk