



Connells

Littleworth Road
Cannock



Ground Floor

Reception Room

Having a double glazed front entrance door, double glazed window to the front aspect, stairs to first floor, radiator, ceiling light point, laminate flooring and door to dining room

Dining Room

Having a double glazed window to the rear aspect, radiator, ceiling light point, laminate flooring and open access to the kitchen

Kitchen

Being a fitted kitchen with a range of wall, base and drawer units with laminate work surfaces over and having a sink with drainer, integrated oven with gas hobs and extractor hood over, ceiling spotlights, laminate flooring, double glazed window to the side aspect and door to garden



First Floor

Landing

Having carpeted flooring, ceiling light point, carpeted flooring, loft hatch and doors to bedrooms and bathroom

Bedroom 1

Having a double glazed window to the rear aspect, radiator, ceiling light point and carpeted flooring

Bedroom 2

Having a double glazed window to the front aspect, storage cupboard, radiator, ceiling light point and carpeted flooring

Bathroom

Having a double glazed window to the side aspect, WC, wash hand basin, bath, shower cubicle, part tiled walls, towel radiator, extractor fan, ceiling spotlights and vinyl flooring

Outside

Front

Having a mid-level brick wall with hedging and paved pathway to front entrance door

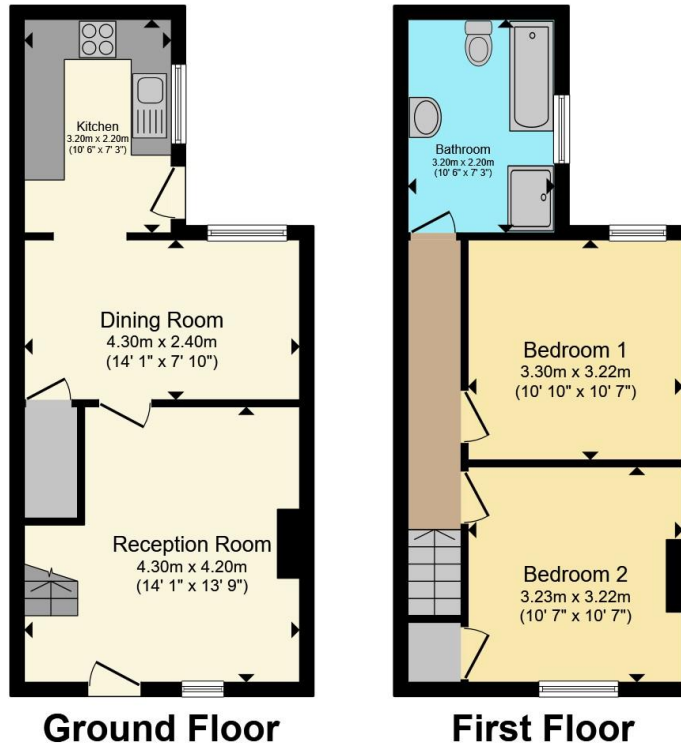
Rear

Having a paved courtyard area with steps leading to the communal parking area









Total floor area 69.2 m² (744 sq.ft.) approx

This floor plan is for illustrative purposes only. It is not drawn to scale. Any measurements, floor areas (including any total floor area), openings and orientation are approximate. No details are guaranteed, they cannot be relied upon for any purpose and they do not form part of any agreement. No liability is taken for any error, omission or misstatement. A party must rely upon its own inspection(s). Powered by www.propertybox.io



To view this property please contact Connells on

T 01543 500923
E cannock@connells.co.uk

10-12 Wolverhampton Road
 CANNOCK WS11 1AH

EPC Rating: C Council Tax Band: A

Tenure: Freehold

[check out more properties at connells.co.uk](http://connells.co.uk)



1. MONEY LAUNDERING REGULATIONS Intending purchasers will be asked to produce identification documentation at a later stage and we would ask for your co-operation in order that there will be no delay in agreeing the sale. 2. These particulars do not constitute part or all of an offer or contract. 3. The measurements indicated are supplied for guidance only and as such must be considered incorrect. Potential buyers are advised to recheck measurements before committing to any expense. 4. We have not tested any apparatus, equipment, fixtures, fittings or services and it is in the buyers interest to check the working condition of any appliances.

Connells Residential is registered in England and Wales under company number 1489613, Registered Office is Cumbria House, 16-20 Hockliffe Street, Leighton Buzzard, Bedfordshire, LU7 1GN. VAT Registration Number is 500 2481 05.

See all our properties at www.connells.co.uk | www.rightmove.co.uk | www.zoopla.co.uk

Property Ref: CNK108829 - 0001