

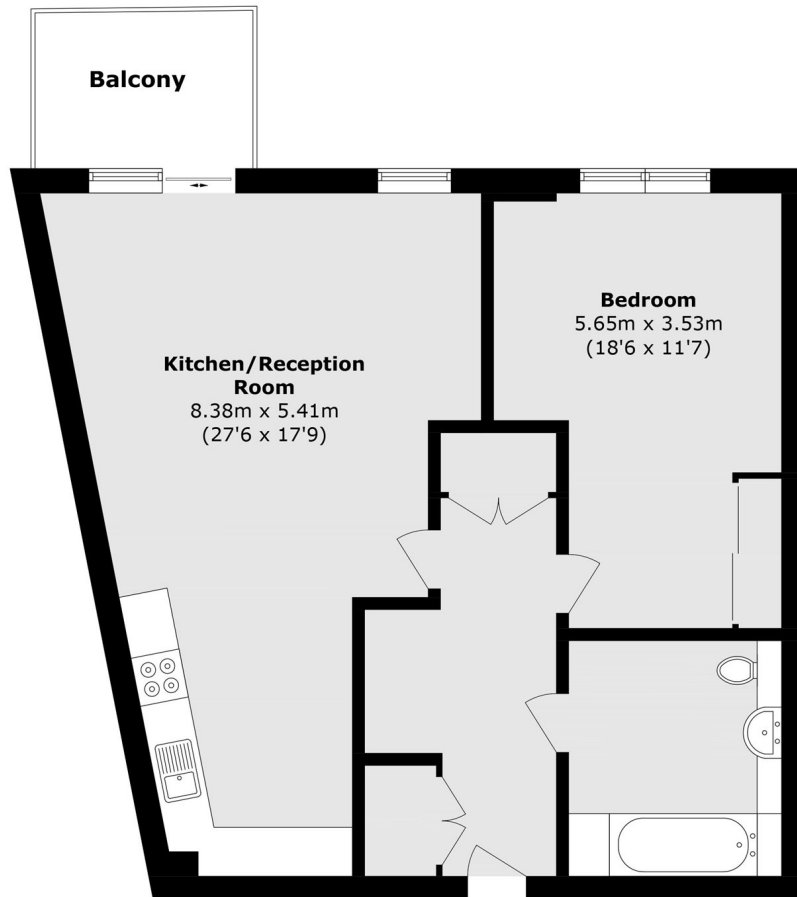


Trinity Way, W3

£375,000

A modern one bedroom second floor apartment located opposite a large park (Trinity Way Open Space). This immaculately presented apartment has a long lease and a large balcony.

Trinity Way is on the borders of Shepherds Bush and just under half a mile from East Acton (Central line) and Acton Central (Overground) stations providing excellent access into town.



Total area (approx.): 70.3 sq. m (756.7 sq. ft)
Balcony area (approx.): 5.1 sq m (54.8 sq. ft)

Robertson Smith & Kempson Acton Sales
137 High Street, Acton,
London, W3 6LY
020 8896 3996
actonsales@robertsonsmithandkempson.co.uk

Energy Rating: B. We aim to make our particulars both accurate and reliable. However they are not guaranteed; nor do they form part of an offer or contract. If you require clarification on any points then please contact us, especially if you're traveling some distance to view. Please note that appliances and heating systems have not been tested and therefore no warranties can be given as to their good working order.