



**CHARLWOOD STREET**  
PIMLICO

**JACKSON-STOPS** 

---

## CHARLWOOD STREET PIMLICO, SW1V

ASKING PRICE: £3,000 PCM

A recently refurbished two bedroom garden flat in Pimlico with private entrance.

The property benefits from a private garden and wooden flooring in the reception. Just 0.3 miles from Pimlico Underground Station, 0.7 miles from Victoria Station and 0.7 miles from Battersea Park.



### KEY FEATURES

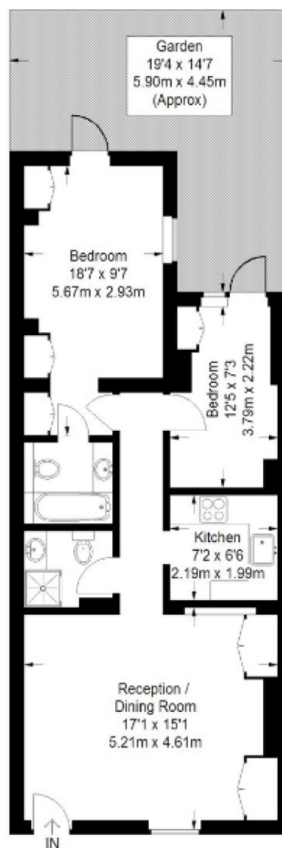
- Two bedrooms
- Two bathrooms
- Kitchen
- Reception
- Garden
- Tax Band: E





## Charlwood Street

Approximate Gross Internal Area  
710 sq ft / 66 sq m



Lower Ground Floor

Not to scale, for guidance only and must not be relied upon as a statement of fact.  
All measurements and areas are approximate only and have been prepared in  
accordance with the current edition of the RICS Code of Measuring Practice.

Energy Rating: D. We aim to make our particulars both accurate and reliable. However they are not guaranteed; nor do they form part of an offer or contract. If you require clarification on any points then please contact us, especially if you are travelling some distance to view. Please note that appliances and heating systems have not been tested and therefore no warranties can be given as to their good working order.

**ASKING PRICE: £3,000 PCM**

PIMLICO

020 7828 4243

pimlicolettings@jackson-stops.com

jackson-stops.co.uk

**JACKSON-STOPS** 