

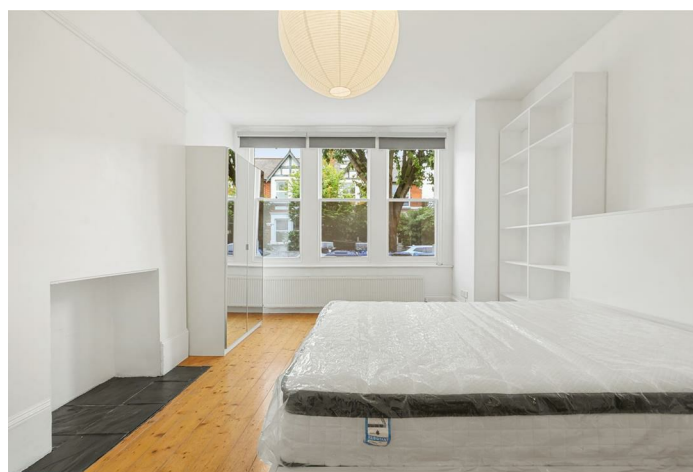


Harlesden Gardens, NW10

TO LET - £2,800 Per Month

Ideally positioned within easy reach of excellent local amenities and transport connections, this impressive three-bedroom ground floor apartment offers bright and spacious accommodation throughout. The property features a superb open-plan reception and dining area, a well-appointed kitchen, and direct access to a beautifully maintained private garden, creating an ideal setting for both everyday living and entertaining.

Harlesden High Street is just a short walk away, providing a vibrant selection of shops, cafés, and local conveniences, while Harlesden Station offers swift and convenient links into Central London and beyond.



020 8450 9377

rentals@cameronsstiff.co.uk

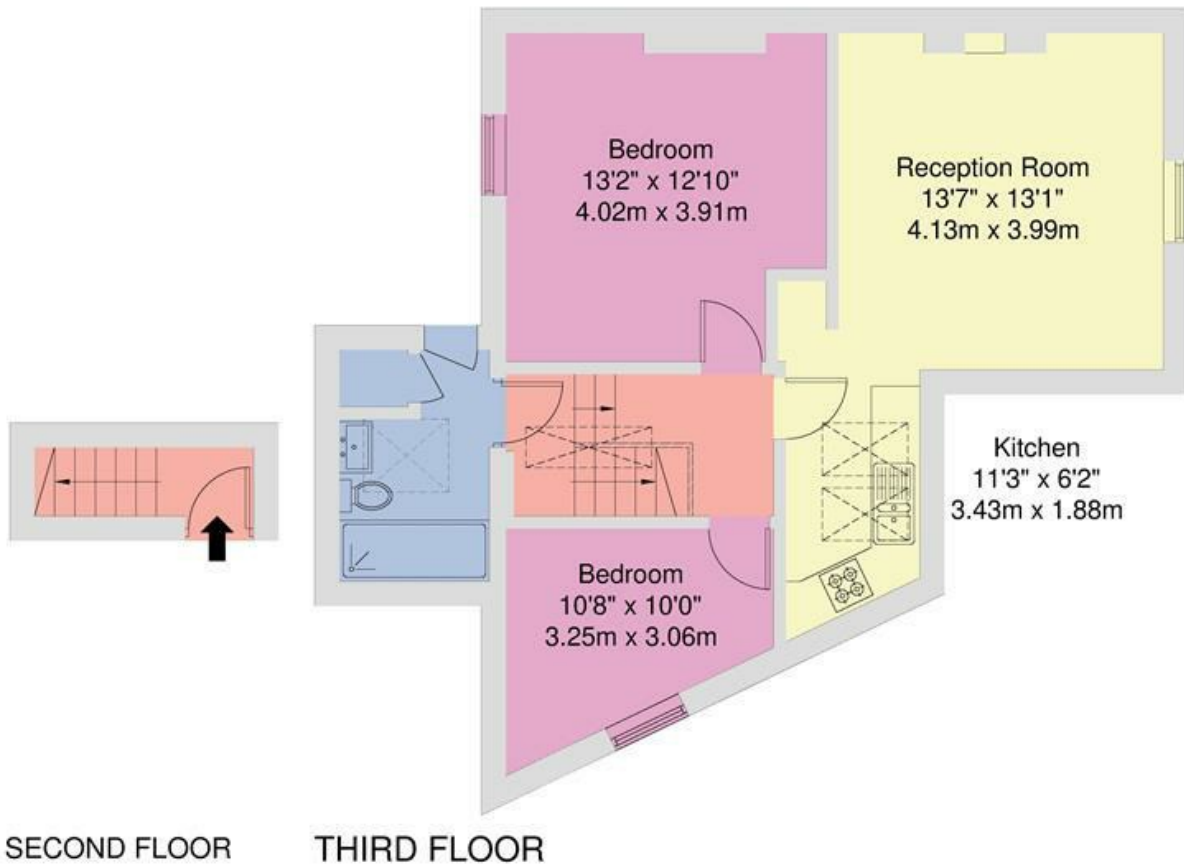
cameronsstiff.co.uk



Rutland Park, NW2

Approximate Area = 61 sq m / 656 sq ft

For Identification only - Not to Scale



Disclaimer: Floorplan produced in accordance with RICS guidelines. While we do not doubt the floorplan accuracy and completeness, you or your advisors should conduct a careful, independent investigation of the property in respect of monetary valuation. Produced for Camerons Stiff & Co.

EPC: D

Ref: 19759996

