



Hardinge Road, NW10

£4,500 Per Month

A newly refurbished five-bedroom semi-detached house available to let in a quiet, family-friendly road in Kensal Rise. The property offers 1,851 sq ft of living space, featuring three reception rooms, a study, a fully fitted eat-in kitchen, a utility room, five bedrooms (four doubles and one single), two bathrooms, and a separate WC. It also benefits from a private 43 ft rear garden, an integrated garage, and off-street parking for one car. Conveniently located close to Kensal Rise and Kensal Green stations, with excellent transport links and local bus routes.

- AVAILABLE TO LET
- Attractive five-bedroom family residence
- Spacious living areas including three reception rooms
- Generous private rear garden, ideal for outdoor enjoyment
- Excellent connectivity with nearby rail and Underground services
- COUNCIL: Brent (F) DEPOSIT £5,192.00



020 8450 9377 - 020 8459 1133
rentals@cameronsstiff.co.uk

Hardinge Road, NW10

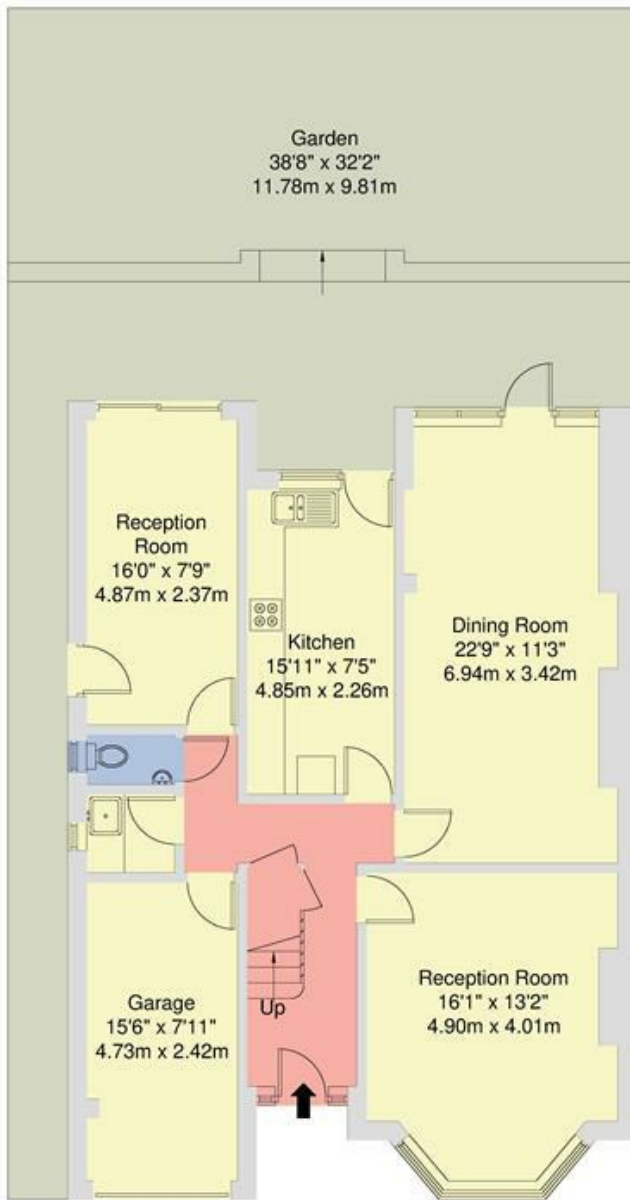
Approximate Area = 172.0 sq m / 1851 sq ft

For Identification only - Not to Scale

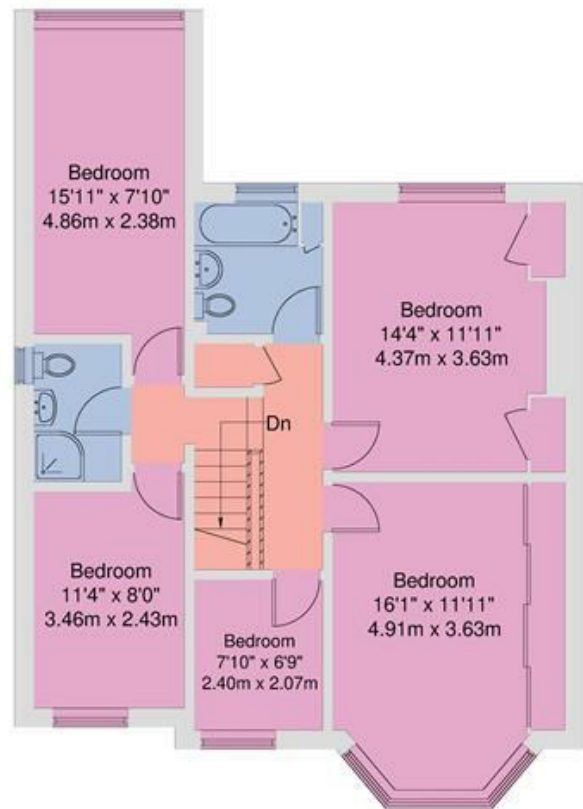


EPC: D

Ref: 19780501



GROUND FLOOR



FIRST FLOOR

Disclaimer : Floorplan measurements are approximate and are for illustrative purposes only. While we do not doubt the floorplan accuracy and completeness, you or your advisors should conduct a careful, independent investigation of the property in respect of monetary valuation.

