



CUMBERLAND STREET
PIMLICO

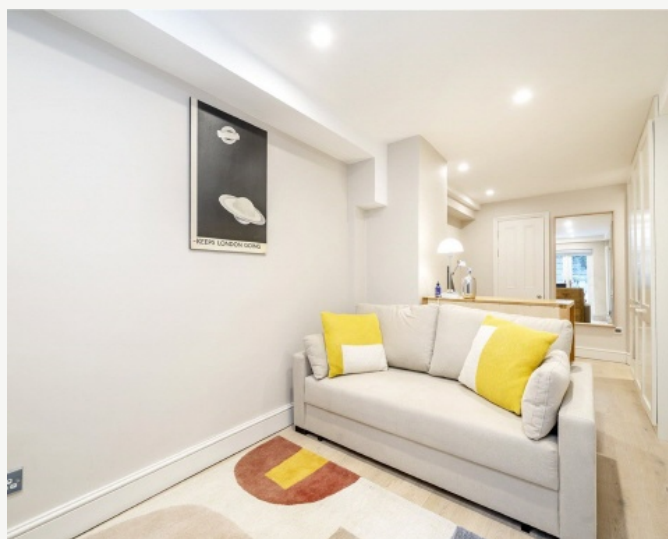
JACKSON-STOPS 

CUMBERLAND STREET PIMLICO, SW1V

ASKING PRICE: £4,250 PCM

SHORT LET. A recently refurbished, two-bedroom, garden flat in the heart of the Pimlico Grid.

The flat has been finished and furnished to a high standard. Bills included in the rent. Just 0.4 miles from Victoria Station, 0.5 miles from Pimlico Underground Station, 0.7 miles from Sloane Square Station and 0.6 miles from Battersea Park.



KEY FEATURES

- Two Double Bedrooms
- Two Bathrooms
- Wooden Floors
- Private Patio Terrace
- Private Entrance
- Tax Band: E





Total area (approx.): 78.3 sq. m (842.8 sq. ft)
Lightwell: 2.9 sq. m (31.2 sq. ft)

Energy Rating: C. We aim to make our particulars both accurate and reliable. However they are not guaranteed; nor do they form part of an offer or contract. If you require clarification on any points then please contact us, especially if you are travelling some distance to view. Please note that appliances and heating systems have not been tested and therefore no warranties can be given as to their good working order.

ASKING PRICE: £4,250 PCM

PIMLICO

020 7828 4243

pimlicolettings@jackson-stops.com

jackson-stops.co.uk

JACKSON-STOPS 