



**Connells**

Sheephouse Road  
Hemel Hempstead



## Property Description

An attractive and well-maintained three-bedroom staggered mid-terrace home, ideally positioned within the highly sought-after HP3 location, renowned for its excellent local schools and strong community appeal. The property enjoys a generous driveway providing ample off-road parking, complete with a dedicated EV charging point.

The ground floor accommodation comprises a stylish modern kitchen, a welcoming lounge featuring a fireplace and French doors opening onto the rear garden, and a convenient downstairs WC. Additional practicality is provided by shared side access to the garden.

Upstairs offers three well-proportioned bedrooms served by a contemporary family bathroom, while the landing provides access to the loft via a fitted ladder. Externally, the well-maintained rear garden features a patio area, lawn, and shed, creating an ideal space for relaxation and entertaining.

The location is particularly appealing, offering convenient access to local transport links, including nearby mainline stations and excellent road connections to the M1 and M25, making it ideal for commuters and families alike.

## Front Garden

Driveway with dropped curb for five cars as well as EV charger

## Entrance Porch

Double glazed door to the front and radiator

## Cloakroom

Double glazed window, part tiled, w/c and wash hand basin

## Lounge

Double glazed french door to access garden, radiator, fireplace and storage cupboard

## Kitchen

Fitted with wall and base units with work surfaces to compliment, sink/drainers with splashback, gas oven, dishwasher, washing machine and dishwasher, door with side access to garden

## Landing

Double glazed window, storage cupboard and airing cupboard

## Bedroom 1

Double glazed window, wardrobe and radiator

## Bedroom 2

Double glazed window, storage and radiator

### Bedroom 3

Double glazed window and radiator

### Bathroom

Floor to ceiling tiles, shower/bath, w/c, wash hand basin, double glazed window and heated towel rail

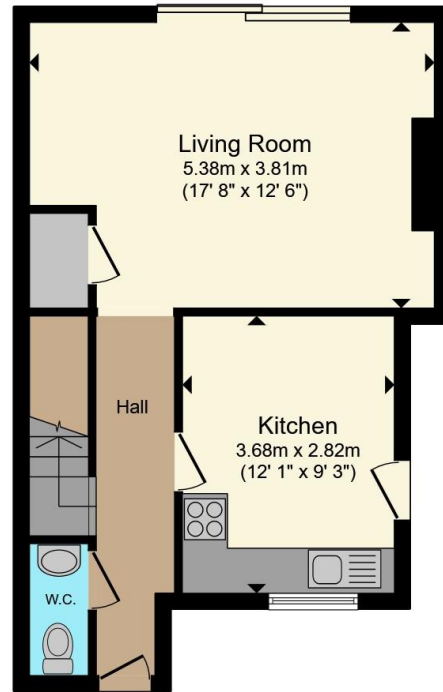
### Rear Garden

Patio area, manicured lawn, shed and shared side access

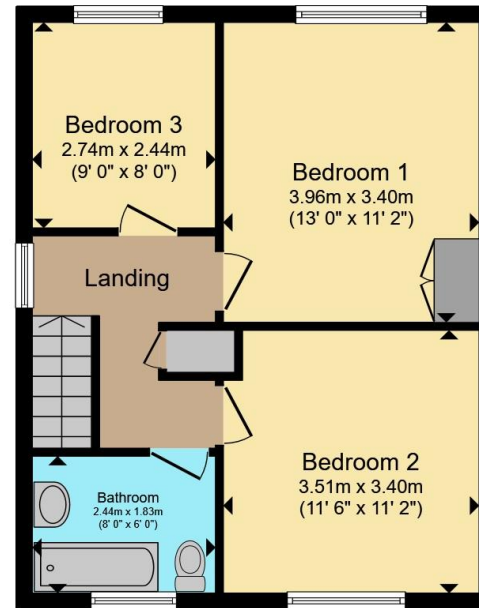








**Ground Floor**



**First Floor**

Total floor area 86.0 m<sup>2</sup> (925 sq.ft.) approx

This floor plan is for illustrative purposes only. It is not drawn to scale. Any measurements, floor areas (including any total floor area), openings and orientation are approximate. No details are guaranteed, they cannot be relied upon for any purpose and they do not form part of any agreement. No liability is taken for any error, omission or misstatement. A party must rely upon its own inspection(s). Powered by [www.propertybox.io](http://www.propertybox.io)



To view this property please contact Connells on

**T 01442 216 633**

**E [hemelhempstead@connells.co.uk](mailto:hemelhempstead@connells.co.uk)**

45 Marlowes  
HEMEL HEMPSTEAD HP1 1LD

EPC Rating: C Council Tax Band: C

Tenure: Freehold

**view this property online [connells.co.uk/Property/HEM312762](http://connells.co.uk/Property/HEM312762)**



1. MONEY LAUNDERING REGULATIONS Intending purchasers will be asked to produce identification documentation at a later stage and we would ask for your co-operation in order that there will be no delay in agreeing the sale. 2. These particulars do not constitute part or all of an offer or contract. 3. The measurements indicated are supplied for guidance only and as such must be considered incorrect. Potential buyers are advised to recheck measurements before committing to any expense. 4. We have not tested any apparatus, equipment, fixtures, fittings or services and it is in the buyers interest to check the working condition of any appliances.

Connells Residential is registered in England and Wales under company number 1489613, Registered Office is Cumbria House, 16-20 Hockliffe Street, Leighton Buzzard, Bedfordshire, LU7 1GN. VAT Registration Number is 500 2481 05.

**See all our properties at [www.connells.co.uk](http://www.connells.co.uk) | [www.rightmove.co.uk](http://www.rightmove.co.uk) | [www.zoopla.co.uk](http://www.zoopla.co.uk)**

Property Ref: HEM312762 - 0006