



**Lodgefield, Welwyn Garden City AL7 1SD**

**welcome to**

## **Lodgefield, Welwyn Garden City**

This CHAIN FREE three-bedroom terraced home is situated in the highly sought-after Haldens area of Welwyn Garden City. The ground floor comprises an entrance hall, a convenient downstairs cloakroom, a spacious lounge, and a fully fitted kitchen/dining room - ideal for both everyday family living and entertaining. To the first floor, the property offers three well-proportioned bedrooms, a family bathroom, and a separate W/C. Externally, the home benefits from front and rear gardens, along with on-street parking. Further benefits include double glazing and gas central heating throughout. Ideally located within walking distance of Welwyn Garden City town centre, the property provides easy access to a wide range of shops, amenities, and the mainline train station, offering direct services into London King's Cross and Moorgate—making it an excellent choice for commuters.

**Agents Note:** Please be aware that the information we have about this property is limited. If there is any point which is of particular importance to you, please contact the branch and we will endeavour to check for you, especially if you are contemplating travelling some distance to view the property.



### Cloakroom

Double glazed window, wash hand basin, W/C.

### Lounge

Double glazed window to front, carpet, fireplace.

### Dining Room

French doors to garden, carpet, radiator.

### Kitchen

Double glazed window to front, wall and base units, part tiled, sink/drain, hob/oven.

### Bedroom One

Double glazed window to front, carpet, fitted wardrobe.

### Bedroom Two

Double glazed window to front, carpet, storage.

### Bedroom Three

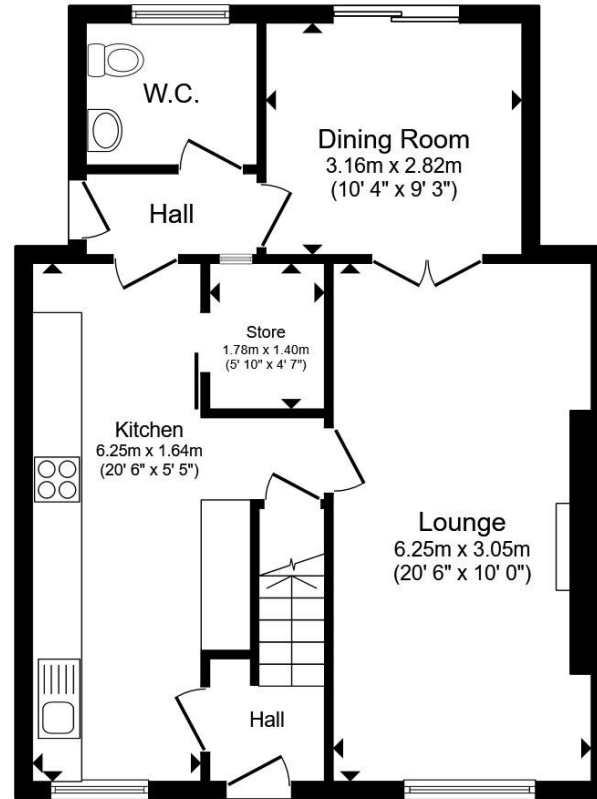
Double glazed window to rear, carpet, airing cupboard.

### Shower Room

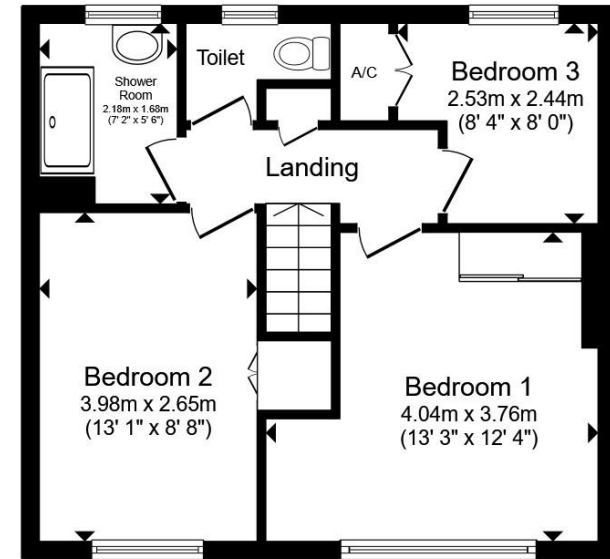
Double glazed window to rear, tiled walls, shower, wash hand basin, heated towel rail.

### Separate W/C

Double glazed window to rear, W/C.



**Ground Floor**



**First Floor**

Total floor area 101.0 m<sup>2</sup> (1,087 sq.ft.) approx

This floor plan is for illustrative purposes only. It is not drawn to scale. Any measurements, floor areas (including any total floor area), openings and orientation are approximate. No details are guaranteed, they cannot be relied upon for any purpose and they do not form part of any agreement. No liability is taken for any error, omission or misstatement. A party must rely upon its own inspection(s). Powered by [www.propertybox.io](http://www.propertybox.io)



**check out more properties at** [williamhbrown.co.uk](http://williamhbrown.co.uk)



welcome to

## Lodgefield, Welwyn Garden City

- CHAIN FREE
- Three Bedrooms
- Terraced House
- On Street Parking
- Downstairs Cloakroom

Tenure: Freehold EPC Rating: D  
Council Tax Band: D



£375,000



check out more properties at [williamhbrown.co.uk](http://williamhbrown.co.uk)

Please note the marker reflects the  
postcode not the actual property



Property Ref:  
WGN109807 - 0003

1. MONEY LAUNDERING REGULATIONS Intending purchasers will be asked to produce identification documentation at a later stage and we would ask for your co-operation in order that there is no delay in agreeing the sale. 2. These particulars do not constitute part or all of an offer or contract. 3. The measurements indicated are supplied for guidance only and as such must be considered incorrect. Potential buyers are advised to recheck measurements before committing to any expense. 4. We have not tested any apparatus, equipment, fixtures or services and it is in the buyers interest to check the working condition of any appliances. 5. Where an EPC, or a Home Report (Scotland only) is held for this property, it is available for inspection at the branch by appointment. If you require a printed version of a Home Report, you will need to pay a reasonable production charge reflecting printing and other costs. 6. We are not able to offer an opinion either written or verbal on the content of these reports and this must be obtained from your legal representative. 7. Whilst we take care in preparing these reports, a buyer should ensure that his/her legal representative confirms as soon as possible all matters relating to title including the extent and boundaries of the property and other important matters before exchange of contracts.

William H Brown is a trading name of Sequence (UK) Limited which is registered in England and Wales under company number 4268443, Registered Office is Cumbria House, 16-20 Hockliffe Street, Leighton Buzzard, Bedfordshire, LU7 1GN. VAT Registration Number is 500 2481 05.

  
william h brown



01707 324361



WelwynGardenCity@williamhbrown.co.uk



53 Wigmores North, WELWYN GARDEN CITY,  
Hertfordshire, AL8 6PG



[williamhbrown.co.uk](http://williamhbrown.co.uk)