



# 18 Groombridge House, Croydon Road

London, SE20 7AG

**Asking Price £210,000**

Welcome to Groombridge House, a charming first-floor flat located on Croydon Road in the vibrant area of Penge, London, SE20. This delightful one-bedroom property offers a wonderful opportunity for first-time buyers or investors looking to make their mark in the property market.

As you enter the flat, you will find a spacious reception room that provides a warm and inviting atmosphere, perfect for relaxing or entertaining guests. The separate kitchen offers the potential for modernisation, allowing you to create a culinary space that reflects your personal style and preferences.

The bedroom is well-proportioned, providing a comfortable retreat at the end of the day. The bathroom is conveniently located, ensuring ease of access for both residents and guests.

One of the standout features of this property is the included storage shed, which is perfect for stowing away outdoor equipment or personal belongings. Additionally, residents have the benefit of the communal courtyard.

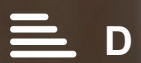
This flat is sold chain-free, making the purchasing process smoother and more straightforward. With its modernisation potential, this property presents an excellent opportunity for a buyer to truly make it their own.

Situated in a desirable location, Groombridge House is close to local amenities, transport links, and green spaces, making it an ideal choice for those seeking a balance of convenience and community. Don't miss the chance to view this promising flat and envision the possibilities it holds for you.

- ONE BEDROOM FLAT
- FIRST FLOOR
- PURPOSE BUILT
- SOLD CHAIN FREE
- SEPARATE KITCHEN
- STORAGE SHED INCLUDED
- COMMUNAL COURTYARD
- 11 MINUTE WALK TO KENT HOUSE STATION
- 1 MINUTE WALK TO PENGE HIGH STREET
- (ALL WALKING TIMES ARE ESTIMATED VIA GOOGLE MAPS)

## Viewing

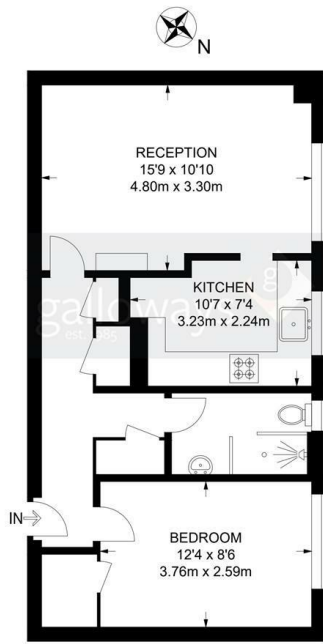
Please contact our Galloways Penge Office on 020 8778 1120 if you wish to arrange a viewing appointment for this property or require further information.



## Floor Plan

**Croydon Road, SE20**  
**1 Bedroom Flat**

APPROXIMATE GROSS INTERNAL AREA: 499 SQ FT / 46.3 SQ M

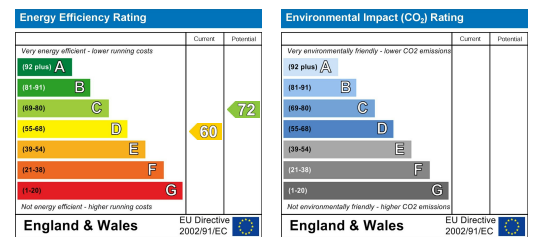


FIRST FLOOR

## Area Map



## Energy Efficiency Graph



These particulars, whilst believed to be accurate are set out as a general outline only for guidance and do not constitute any part of an offer or contract. Intending purchasers should not rely on them as statements of representation of fact, but must satisfy themselves by inspection or otherwise as to their accuracy. No person in this firm's employment has the authority to make or give any representation or warranty in respect of the property.