

Daventry

28 High Street, Daventry, NN11 4HU

T: 01327 879869

Offices also located in Northampton

stonhills.co.uk



7 Castle Hill, Daventry

NN11 4AQ

£249,995



Offered to the market with no upper chain, Stonhills are pleased to present this established three-bedroom semi-detached home, conveniently situated within walking distance of Daventry town centre and its excellent range of amenities.

Requiring a programme of modernisation and offering fantastic scope for improvement, this property presents an excellent opportunity for buyers looking to create a home tailored to their own tastes and requirements.

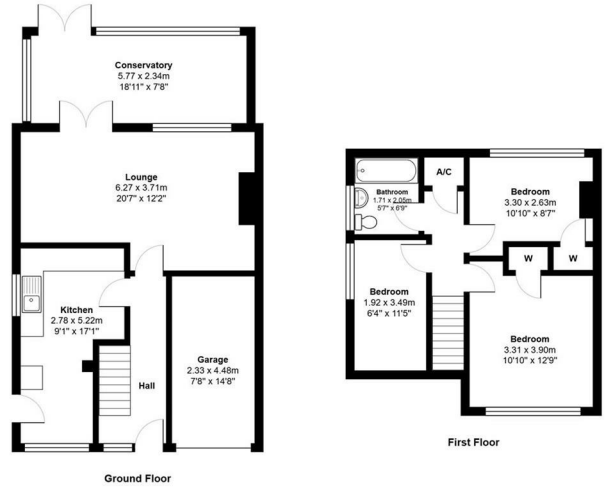
The accommodation briefly comprises a welcoming entrance hall, a spacious kitchen/dining room, and a generous lounge/dining room with patio doors leading through to a useful lean-to. To the first floor are three well-proportioned bedrooms and a family bathroom.

Externally, the property benefits from a pleasant rear garden, providing an outdoor space to enjoy. To the front, there is ample driveway parking leading to a single garage, which features a remote-controlled door for added convenience.

Offering excellent potential, a desirable location, and no onward chain, this is a property that must be viewed to fully appreciate the opportunity on offer.

Energy Efficiency Rating		Current	Potential
<i>Very energy efficient - lower running costs</i>			
(92 plus) A			
(81-91) B			
(69-80) C			
(55-68) D			
(39-54) E			
(21-38) F			
(1-20) G			
<i>Not energy efficient - higher running costs</i>			
England & Wales	EU Directive 2002/91/EC		

Environmental Impact (CO ₂) Rating		Current	Potential
<i>Very environmentally friendly - lower CO2 emissions</i>			
(92 plus) A			
(81-91) B			
(69-80) C			
(55-68) D			
(39-54) E			
(21-38) F			
(1-20) G			
<i>Not environmentally friendly - higher CO2 emissions</i>			
England & Wales	EU Directive 2002/91/EC		



Total Area: 104.6 m² ... 1126 ft²



Appliances: Stonhills have not tested any equipment, fittings for services and so cannot verify they are in working order. The buyer is advised to obtain verification from their Solicitor or Surveyor. Measurements are for guidance only and are approximate. The buyer is therefore advised to check measurements if they are required for any other purpose e.g. fitted carpets, furniture, etc.