



Connells

Tower Lodge Clock Tower View
Wordsley Stourbridge

Tower Lodge Clock Tower View Wordsley Stourbridge DY8 5TJ

for sale
£170,000



Property Description

SITUATED IN THE HISTORIC FORMER WORDSLEY HOSPITAL. TOWER LODGE IS A BEAUTIFUL PERIOD BUILDING TUCKED AWAY IN AN ATTRACTIVE PART OF THE DEVELOPMENT. THE APARTMENT BENEFITS FROM HIGH CEILINGS & SASH WINDOWS. AN INTERNAL VIEWING IS HIGHLY RECOMMENDED. Briefly comprising; Entrance Hallway, open plan living and kitchen area, two bedroom (bedroom two used currently as lounge and shower room. Apartment 9 is situated on the ground floor to the rear of the building with lovely views over the attractive greenery, ideal for working from home.

Outside

The property is on the ground floor of a period building set in stunning grounds with inset pathway leading to the security entrance with intercom system. Allocated parking spaces.

Communal Hallway

Security intercom system gives access to communal hallway with stairs off to first floor landing and leading to apartment 9.

Hallway

Door to the front elevation, wood effect flooring, electric heater and doors to;

Open Plan Lounge/Kitchen

Double glazed tall sash windows to rear and side elevations overlooking green space. Lounge/Dining Area with electric heater. Kitchen area comprising; a range of wall and base units, draws, worksurfaces with tiled splashbacks and stainless steel sink inset, electric oven, hob and extractor hood and integrated washing machine.

Bedroom One

Double glazed tall sash windows to front and side elevations. Electric heater and mirrored fitted wardrobes.

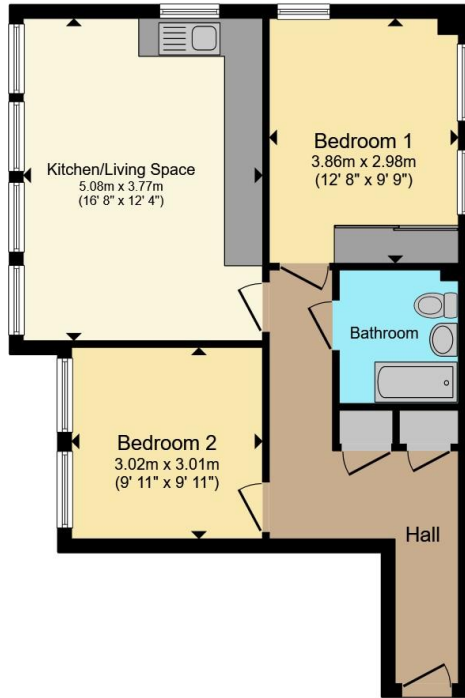
Bedroom Two

Double glazed tall sash windows to rear and side elevations. Electric heater. Currently used as lounge.

Shower Room

Electric towel rail heater, shower area, wash hand basin and low flush wc.





Ground Floor

Total floor area 56.1 m² (603 sq.ft.) approx

This floor plan is for illustrative purposes only. It is not drawn to scale. Any measurements, floor areas (including any total floor area), openings and orientation are approximate. No details are guaranteed, they cannot be relied upon for any purpose and they do not form part of any agreement. No liability is taken for any error, omission or misstatement. A party must rely upon its own inspection(s). Powered by www.propertybox.io

Connells



To view this property please contact Connells on

T 01384 374 545
E stourbridge@connells.co.uk

11B St. Johns Road
 STOURBRIDGE DY8 1EJ

EPC Rating: D

Council Tax
 Band: A

Service Charge: Ask
 Agent

Ground Rent:
 Ask Agent

Tenure: Leasehold

view this property online connells.co.uk/Property/SBR313561

This is a Leasehold property. We are awaiting further details about the Term of the lease. For further information please contact the branch. Please note additional fees could be incurred for items such as Leasehold packs.



1. MONEY LAUNDERING REGULATIONS Intending purchasers will be asked to produce identification documentation at a later stage and we would ask for your co-operation in order that there will be no delay in agreeing the sale. 2. These particulars do not constitute part or all of an offer or contract. 3. The measurements indicated are supplied for guidance only and as such must be considered incorrect. Potential buyers are advised to recheck measurements before committing to any expense. 4. We have not tested any apparatus, equipment, fixtures, fittings or services and it is in the buyers interest to check the working condition of any appliances.

Connells Residential is registered in England and Wales under company number 1489613, Registered Office is Cumbria House, 16-20 Hockliffe Street, Leighton Buzzard, Bedfordshire, LU7 1GN. VAT Registration Number is 500 2481 05.

See all our properties at www.connells.co.uk | www.rightmove.co.uk | www.zoopla.co.uk

Property Ref: SBR313561 - 0004