



Connells

Ashbourne Road
Eastfield Wolverhampton



Property Description

Connells Wolverhampton are pleased to present to market this fully renovated end-terraced home being sold with NO UPWARD CHAIN. Well located to nearby amenities and transport links this home promises to be the ideal choice for first time buyers.

Internally the property comprises of an entrance hall, lounge with feature bay window, fitted kitchen, downstairs shower room. On the first floor there are two double bedrooms and a stylish family bathroom. Externally the property continues to impress with a block paved driveway to front providing off road parking, large garden to rear.

Viewing is highly recommended to appreciate the accommodation on offer.

Location And Area

Situated close to Deans Road which links to the main Wednesfield Road with further links to Wednesfield and Bentley Bridge retail park as well as Wolverhampton City centre. New Cross Hospital is also nearby. There are bus routes to the City centre just a stone's throw away.

Entrance Hall

Composite door to side, stairs to first floor landing, double glazed window to side.

Lounge

14' 2" into bay x 12' 10" max (4.32m into bay x 3.91m max)

Double glazed bay window to front, radiator.

Kitchen

6' 10" x 7' 10" (2.08m x 2.39m)

Double glazed window to rear, range of wall and base units with work surfaces above, stainless steel sink drainer, electric oven, electric hob, radiator, access to a rear porch.

Rear Porch

Double glazed door to rear with access to the garden and access to downstairs shower room.

Shower Room

Single glazed window to rear, wc, wash hand basin, shower cubicle, extractor fan, tiled walls and flooring.



First Floor Landing

Double glazed window to side, loft access, radiator, doors to various rooms.

Bedroom One

15' 10" max x 8' 5" (4.83m max x 2.57m)

Double glazed window to front, radiator, airing cupboard.

Bedroom Two

11' 10" x 9' 11" max (3.61m x 3.02m max)

Double glazed window to rear, radiator.

Bathroom

Double glazed window to rear, wc, wash hand basin, bath with mixer taps and shower head attached, extractor fan, heated towel rail, tiled walls and flooring.

Outside Front

Block paved driveway, lawn area.

Outside Rear

Patio, ample lawn, borders and shrubs, storage shed, gated side access.

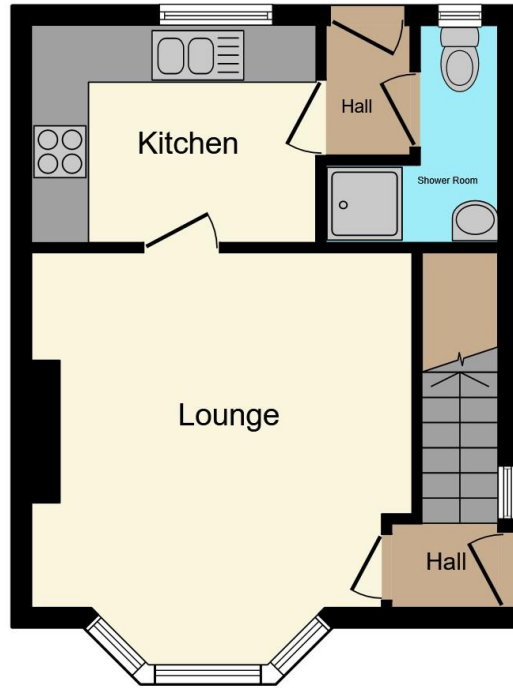
Agents Note

The Land Registry title has yet to be updated with the Vendor's details. Please ask the branch for more details.

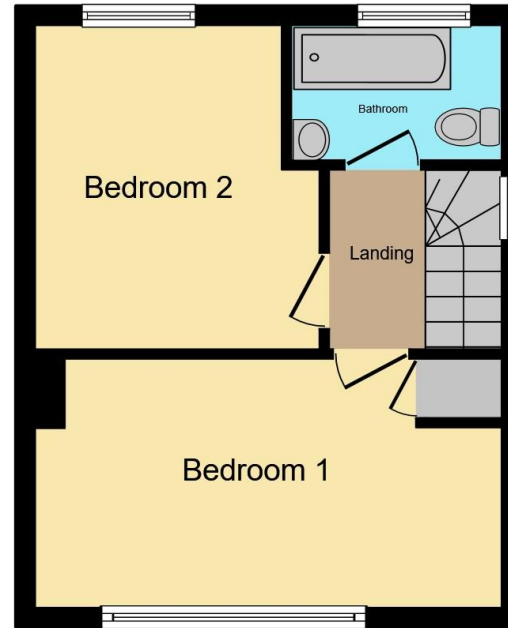








Ground Floor



First Floor

Total floor area 61.2 m² (658 sq.ft.) approx

This floor plan is for illustrative purposes only. It is not drawn to scale. Any measurements, floor areas (including any total floor area), openings and orientation are approximate. No details are guaranteed, they cannot be relied upon for any purpose and they do not form part of any agreement. No liability is taken for any error, omission or misstatement. A party must rely upon its own inspection(s). Powered by www.propertybox.io



To view this property please contact Connells on

T 01902 710 170
E wolverhampton@connells.co.uk

81-83 Darlington Street
 WOLVERHAMPTON WV1 4EX

EPC Rating: D Council Tax Band: A

Tenure: Freehold

view this property online connells.co.uk/Property/WVH335602



1. MONEY LAUNDERING REGULATIONS Intending purchasers will be asked to produce identification documentation at a later stage and we would ask for your co-operation in order that there will be no delay in agreeing the sale. 2. These particulars do not constitute part or all of an offer or contract. 3. The measurements indicated are supplied for guidance only and as such must be considered incorrect. Potential buyers are advised to recheck measurements before committing to any expense. 4. We have not tested any apparatus, equipment, fixtures, fittings or services and it is in the buyers interest to check the working condition of any appliances.

Connells Residential is registered in England and Wales under company number 1489613, Registered Office is Cumbria House, 16-20 Hockliffe Street, Leighton Buzzard, Bedfordshire, LU7 1GN. VAT Registration Number is 500 2481 05.

See all our properties at www.connells.co.uk | www.rightmove.co.uk | www.zoopla.co.uk

Property Ref: WVH335602 - 0002