



**Connells**

Tarn Rise  
Nuneaton



## Property Description

This well-maintained four-bedroom detached home offers spacious and versatile accommodation, ideal for modern family living. Situated in a popular residential area, the property benefits from a superb layout, contemporary interiors, and well-proportioned rooms throughout.

The ground floor comprises a welcoming entrance hall, a convenient cloakroom/WC, and a generous living room with a bay window, providing plenty of natural light and a comfortable space to relax.

To the rear, the impressive open-plan kitchen/dining area spans the width of the property, offering a stylish and sociable space with modern units and integrated appliances, plus ample room for dining and entertaining with French doors opening onto the rear garden.

To the first floor, the property continues to impress with four well-proportioned bedrooms. The master bedroom benefits from fitted storage and a private en-suite shower room.

Bedrooms two and three are both doubles, while bedroom four offers flexibility as a single room, nursery, or home office. A contemporary family bathroom serves the remaining bedrooms.

Externally, the property boasts a well-kept rear garden, mainly laid to lawn with paved seating areas, perfect for outdoor entertaining. To the front, there is a neatly presented frontage with a driveway providing off-road parking and access to a detached garage.

Making it an excellent choice for growing families or anyone seeking a move-in ready property in a convenient location.

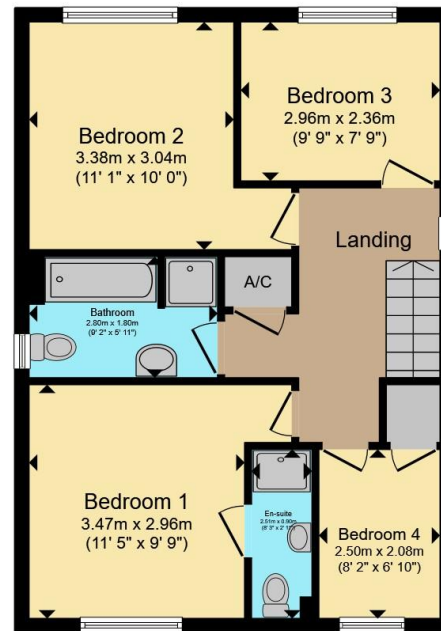




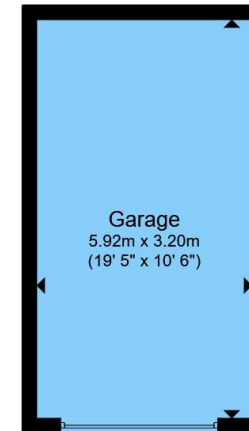




**Ground Floor**



**First Floor**



**Garage**

Total floor area 128.1 m<sup>2</sup> (1,379 sq.ft.) approx

This floor plan is for illustrative purposes only. It is not drawn to scale. Any measurements, floor areas (including any total floor area), openings and orientation are approximate. No details are guaranteed, they cannot be relied upon for any purpose and they do not form part of any agreement. No liability is taken for any error, omission or misstatement. A party must rely upon its own inspection(s). Powered by [www.propertybox.io](http://www.propertybox.io)



To view this property please contact Connells on

**T 01455 230523**  
**E [hinckley@connells.co.uk](mailto:hinckley@connells.co.uk)**

88 Castle Street  
 HINCKLEY LE10 1DD

EPC Rating: B Council Tax  
 Band: E

Tenure: Freehold

**view this property online [connells.co.uk/Property/HIN313856](http://connells.co.uk/Property/HIN313856)**



1. MONEY LAUNDERING REGULATIONS Intending purchasers will be asked to produce identification documentation at a later stage and we would ask for your co-operation in order that there will be no delay in agreeing the sale. 2. These particulars do not constitute part or all of an offer or contract. 3. The measurements indicated are supplied for guidance only and as such must be considered incorrect. Potential buyers are advised to recheck measurements before committing to any expense. 4. We have not tested any apparatus, equipment, fixtures, fittings or services and it is in the buyers interest to check the working condition of any appliances.

Connells Residential is registered in England and Wales under company number 1489613, Registered Office is Cumbria House, 16-20 Hockliffe Street, Leighton Buzzard, Bedfordshire, LU7 1GN. VAT Registration Number is 500 2481 05.

**See all our properties at [www.connells.co.uk](http://www.connells.co.uk) | [www.rightmove.co.uk](http://www.rightmove.co.uk) | [www.zoopla.co.uk](http://www.zoopla.co.uk)**

Property Ref: HIN313856 - 0003