



Connells

Belt Road
Hednesford, Cannock



Ground Floor

Entrance Hall

Having a UPVC front entrance door, ceiling light point, stairs to first floor, door to lounge/diner, downstairs WC and study, storage cupboard

Lounge/Diner

Being a L shaped room and having wooden flooring, ceiling spot lights, double glazed sliding doors leading to the rear garden, media wall with electric fire and access into the kitchen

Kitchen

Being a fully fitted kitchen with a range of wall, base and drawer units with laminate worktops over, sink with drainer, integrated oven, space and plumbing for appliances, gas hob, tiled splashbacks, laminate flooring, ceiling light point and door to the side aspect leading to the rear garden

Guest WC

Having a WC, hand wash basin, ceiling light point, tiled flooring, double glazed window to the front aspect and chrome heated towel rail

Study

The garage being partially converted to create an additional room, having carpeted flooring and storage cupboards

First Floor

Landing

Having carpeted flooring, ceiling light point, doors to bedrooms and bathroom.

Bedroom 1

Having carpeted flooring, built in wardrobes, radiator, ceiling light point, double glazed window to the front aspect

Bedroom 2

Having carpeted flooring, ceiling light point, radiator, double glazed window and fitted wardrobes

Bedroom 3

Having carpeted flooring, ceiling light point, radiator, double glazed window and fitted wardrobes

Bathroom

Having a WC, hand wash basin, bathtub with shower above, tiled flooring, tiled walls, ceiling light point, double glazed window and chrome heated towel rail

Outside

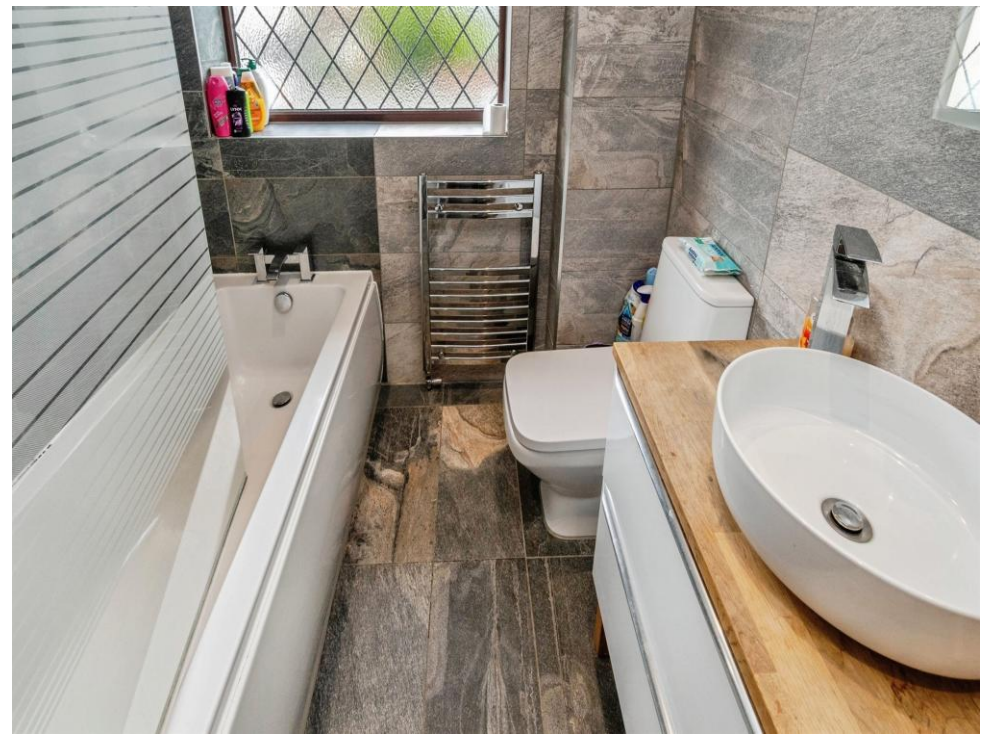
Front

Having a brick paved driveway suitable for multiple vehicles, access to the garage storage via up and over door- this has been partially converted to create the additional reception room and side access to the rear garden

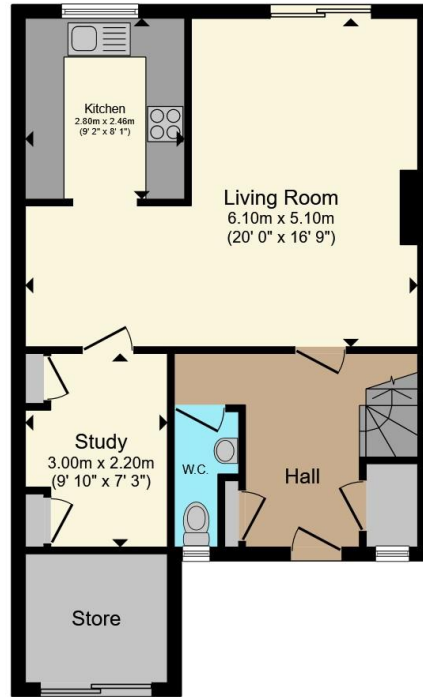
Rear

Having a laid to lawn and partially sectioned to create a childrens play area with rubber bark

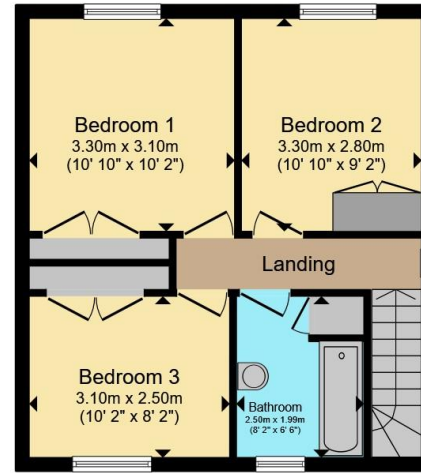








Ground Floor



First Floor

Total floor area 95.5 m² (1,028 sq.ft.) approx

This floor plan is for illustrative purposes only. It is not drawn to scale. Any measurements, floor areas (including any total floor area), openings and orientation are approximate. No details are guaranteed, they cannot be relied upon for any purpose and they do not form part of any agreement. No liability is taken for any error, omission or misstatement. A party must rely upon its own inspection(s). Powered by www.propertybox.io



To view this property please contact Connells on

T 01543 500923
E cannock@connells.co.uk

10-12 Wolverhampton Road
CANNOCK WS11 1AH

EPC Rating: Council Tax
Awaited Band: C

view this property online connells.co.uk/Property/CNK108938

Tenure: Freehold



1. MONEY LAUNDERING REGULATIONS Intending purchasers will be asked to produce identification documentation at a later stage and we would ask for your co-operation in order that there will be no delay in agreeing the sale. 2. These particulars do not constitute part or all of an offer or contract. 3. The measurements indicated are supplied for guidance only and as such must be considered incorrect. Potential buyers are advised to recheck measurements before committing to any expense. 4. We have not tested any apparatus, equipment, fixtures, fittings or services and it is in the buyers interest to check the working condition of any appliances.

Connells Residential is registered in England and Wales under company number 1489613, Registered Office is Cumbria House, 16-20 Hockliffe Street, Leighton Buzzard, Bedfordshire, LU7 1GN. VAT Registration Number is 500 2481 05.

See all our properties at www.connells.co.uk | www.rightmove.co.uk | www.zoopla.co.uk

Property Ref: CNK108938 - 0001