



Connells

Century Park
Yeovil



Property Description

This well-presented two-bedroom home offers comfortable and practical accommodation, including a bright lounge with garden access, a fitted kitchen/diner, cloakroom, and a family bathroom. Upstairs provides two bedrooms, while outside there is an enclosed rear garden with patio and a shed, along with one allocated parking space to the rear of the property.

The property is situated in a popular residential part of Yeovil, conveniently placed for access to local shops, schools, and everyday amenities. Yeovil town centre, leisure facilities, and transport links are within easy reach, making this a practical and well-connected location for a range of buyers.

Live West Housing Association have advised that they would be prepared to staircase a purchase transaction to enable 100% Freehold ownership on completion. This would

mean that any potential purchaser would buy the vendors 40%

share plus the remaining 60% share of the property from

Live West Housing Association. The advertised price is for the

100% Freehold. Your conveyancer will advise with regard to the timescales

involved and you should satisfy yourself in regard to lending ability.

Entrance Hall

Entrance hall with a fitted radiator and stairs rising to the first floor, providing a practical and welcoming introduction to the home.

Cloakroom

Cloakroom fitted with a WC, wash hand basin and radiator, with the added benefit of an extractor fan for ventilation.

Lounge

Lounge with a double-glazed window to the rear, a door opening out to the garden, a useful under-stairs storage cupboard, and a fitted radiator.

Kitchen/Diner

Kitchen/diner with a double-glazed window to the front, fitted with a range of wall and base units with work surfaces over, a stainless-steel sink and drainer, boiler, and a fitted radiator. The kitchen also offers designated space for a washing machine, fridge freezer, and electric oven, making it a practical and functional family space.

Landing

Landing with a useful airing cupboard and doors providing access to the bedrooms and family bathroom.

Bedroom One

Bedroom One features two double-glazed windows to the front, allowing plenty of natural light, along with loft access complete with a ladder and lighting. The room also benefits from a useful storage nook, making it a practical and well-proportioned bedroom.

Bedroom Two

Bedroom Two features a double-glazed window to the rear, a fitted radiator, TV point, and a deep single built-in wardrobe with hanging rail, providing practical storage.

Bathroom

Bathroom fitted with a bath featuring a shower over, WC, wash hand basin, and a fitted radiator,

Outside

Rear Garden

The rear garden features a patio seating area, a useful storage shed, and is enclosed by a combination of fencing and brick walls. A side access gate provides convenient additional access.

Parking

The property benefits from rear parking with one allocated parking space, providing convenient off-street parking.

Agents Note

Live West Housing Association have advised that

they would be prepared to staircase a purchase transaction to

enable 100% Freehold ownership on completion. This would

mean that any potential purchaser would buy the vendors 40%

share plus the remaining 60% share of the property from

Live West Housing Association. The advertised price is for the

100% Freehold. Your conveyancer will advise with regard to the timescales

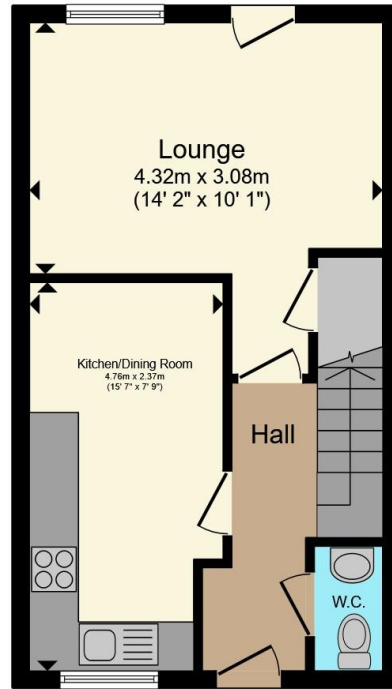
involved and you should satisfy yourself in regard to lending

ability.

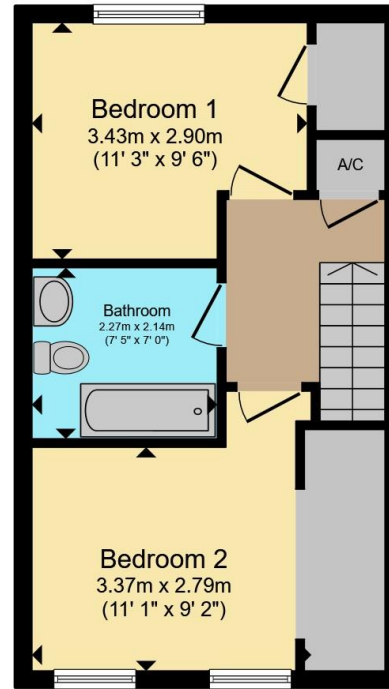








Ground Floor



First Floor

Total floor area 68.6 m² (739 sq.ft.) approx

This floor plan is for illustrative purposes only. It is not drawn to scale. Any measurements, floor areas (including any total floor area), openings and orientation are approximate. No details are guaranteed, they cannot be relied upon for any purpose and they do not form part of any agreement. No liability is taken for any error, omission or misstatement. A party must rely upon its own inspection(s). Powered by www.propertybox.io



To view this property please contact Connells on

T 01935 431 129
E yeovil@connells.co.uk

1-3 Princes Street
 YEOVIL BA20 1EW

EPC Rating: C Council Tax
 Band: C

Tenure: Freehold

view this property online connells.co.uk/Property/YOV314235



1. MONEY LAUNDERING REGULATIONS Intending purchasers will be asked to produce identification documentation at a later stage and we would ask for your co-operation in order that there will be no delay in agreeing the sale. 2. These particulars do not constitute part or all of an offer or contract. 3. The measurements indicated are supplied for guidance only and as such must be considered incorrect. Potential buyers are advised to recheck measurements before committing to any expense. 4. We have not tested any apparatus, equipment, fixtures, fittings or services and it is in the buyers interest to check the working condition of any appliances.

Connells Residential is registered in England and Wales under company number 1489613, Registered Office is Cumbria House, 16-20 Hockliffe Street, Leighton Buzzard, Bedfordshire, LU7 1GN. VAT Registration Number is 500 2481 05.

See all our properties at www.connells.co.uk | www.rightmove.co.uk | www.zoopla.co.uk

Property Ref: YOY314235 - 0005