



SQUAREY STREET, SW17

£525,000

- Victorian maisonette
- Ground floor
- Private garden
- Good condition
- Sought after location
- Energy rating: D





ABOUT THE HOME

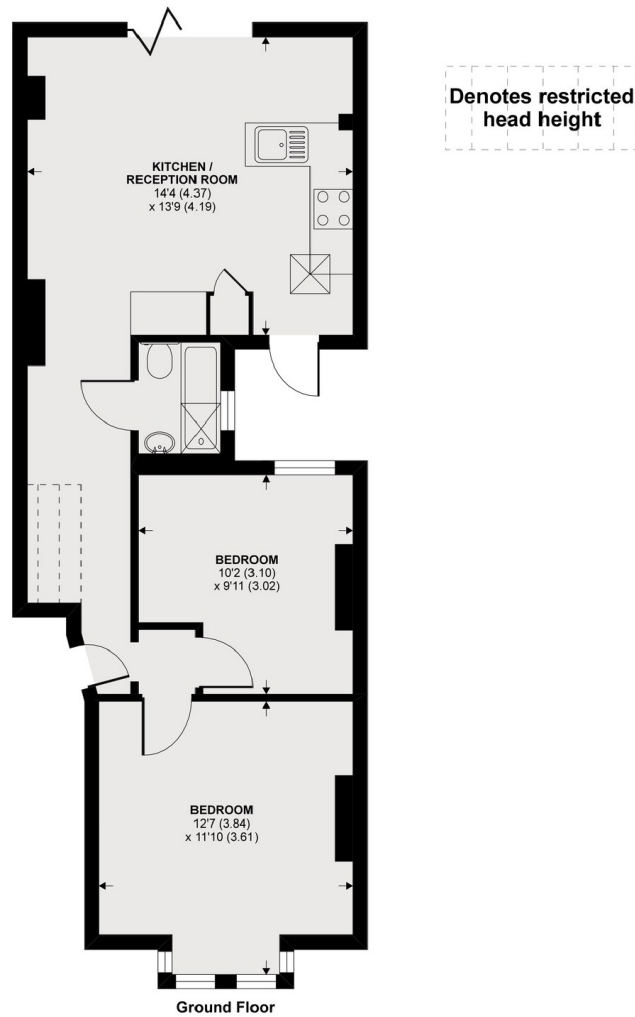
A ground floor Victorian maisonette with private garden and has been refurbished to a good standard.

The property benefits from it's own entrance and low maintenance garden. The property comprises; master bedroom with large bay window, generous second double bedroom, well presented modern bathroom and beautiful kitchen which is open plan to the reception area; offering a good entertaining space and bi fold doors onto the garden.

The property is situated in a sought after residential enclave of streets offering easy access to Earlsfield mainline railway station, Tooting Broadway tube station and Wandsworth Common.







APPROX FLOOR AREA 552 SQ.FT 51.2 SQ.M (INCLUDES RESTRICTED HEAD HEIGHT)

Copyright nichecom.co.uk 2020 REF : 568223

JACKSONS EARLSFIELD

372-374 Garratt Lane,
Earlsfield, London, SW18 4ES
Sales: 020 8971 7979
Lettings: 020 8971 7070

Energy Rating: D We aim to make our particulars both accurate and reliable. However they are not guaranteed; nor do they form part of an offer or contract. If you require clarification on any points then please contact us, especially if you're traveling some distance to view. Please note that appliances and heating systems have not been tested and therefore no warranties can be given as to their good working order.