

SNELLERS

ESTATE AGENTS



Staines Road, TW2

£650,000

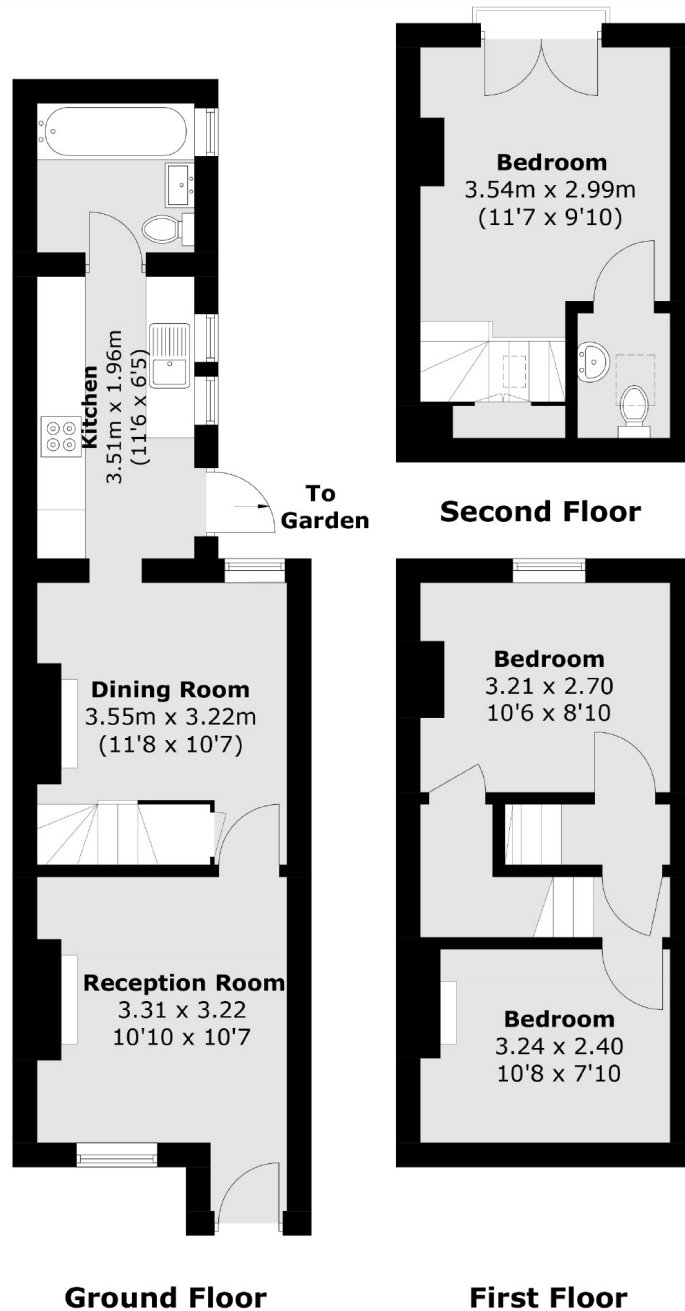
A charming three bedroom Victorian house which offers generous living space including a front reception room which connects to a dining area and kitchen, three bedrooms and a south facing garden. Further benefits include further potential to extend and no onward chain.

Staines Road runs adjacent to the picturesque Twickenham Green which in turn leads into the high street where you will find a vast array of shops, pubs and restaurants. There are also many great schools nearby including Waldegrave Girls School.

- Three Bedrooms • Popular Location • No Chain •
- Period Features • Excellent School Catchment • Sunny Garden •

SNELLERS

ESTATE AGENTS



Total area (approx.): 70.9 sq. m (763.5 sq. ft)

Snellers Twickenham Sales
64-66 Heath Road
Twickenham
TW1 4BX
020 8892 5555
twickenhamsales@snellers.co.uk

Energy Rating: D We aim to make our particulars both accurate and reliable. However they are not guaranteed; nor do they form part of an offer or contract. If you require clarification on any points then please contact us, especially if you're traveling some distance to view. Please note that appliances and heating systems have not been tested and therefore no warranties can be given as to their good working order