



Woodview Rise, Blythe Valley Park Shirley B90 8DQ

welcome to

Woodview Rise, Blythe Valley Park Shirley

A modern and stylish two-bedroom apartment located in the desirable Woodview Rise development at Blythe Valley Park, Shirley. Featuring a spacious open-plan kitchen/living area, principal bedroom with en-suite, contemporary bathroom, and excellent transport links. SHARED OWNERSHIP.

Agent Note

Council Tax Band is C. 25% Shared Ownership

Lounge/Kitchen

Juliette Balcony, laminate flooring and central heating radiator.

Kitchen

Laminated flooring, gas hob, electric oven, space for washing machine and fridge freezer.

Hall

Storage cupboard used as an Utility and central heating radiator.

Bedroom One

Juliette Balcony, carpet, built in wardrobe and central heating radiator.

En Suite

Shower, wc, hand wash basin, vinyl flooring and central heating radiator.

Bedroom Two

Big window, carpet and central heating radiator.

Bathroom

Shower over bath, hand wash basin, wc, vinyl flooring and heated towel radiator.





view this property online shipways.co.uk/Property/SLY112444



welcome to

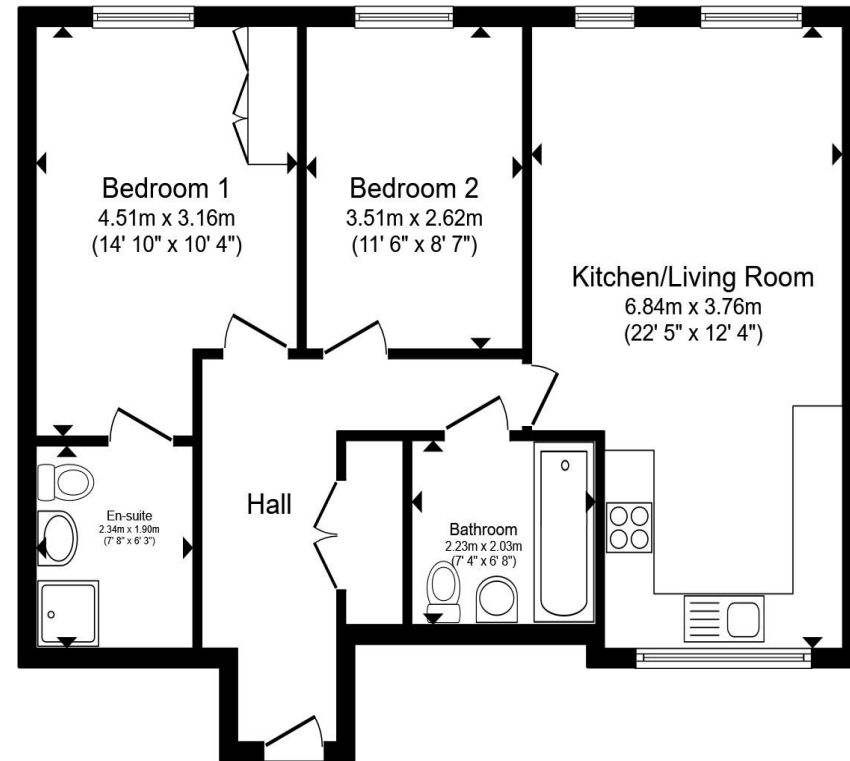
Woodview Rise, Blythe Valley Park Shirley

- First floor Apartment
- Two bedrooms
- En-Suite
- Family bathroom
- Modern fitted kitchen

Tenure: Freehold EPC Rating: B
Council Tax Band: C

from

£55,000



Total floor area 67.0 m² (721 sq.ft.) approx

This floor plan is for illustrative purposes only. It is not drawn to scale. Any measurements, floor areas (including any total floor area), openings and orientation are approximate. No details are guaranteed, they cannot be relied upon for any purpose and they do not form part of any agreement. No liability is taken for any error, omission or misstatement. A party must rely upon its own inspection(s). Powered by www.propertybox.io



view this property online shipways.co.uk/Property/SLY112444



Property Ref:
SLY112444 - 0011

1. MONEY LAUNDERING REGULATIONS Intending purchasers will be asked to produce identification documentation at a later stage and we would ask for your co-operation in order that there is no delay in agreeing the sale. 2. These particulars do not constitute part or all of an offer or contract. 3. The measurements indicated are supplied for guidance only and as such must be considered incorrect. Potential buyers are advised to recheck measurements before committing to any expense. 4. We have not tested any apparatus, equipment, fixtures or services and it is in the buyers interest to check the working condition of any appliances. 5. Where an EPC, or a Home Report (Scotland only) is held for this property, it is available for inspection at the branch by appointment. If you require a printed version of a Home Report, you will need to pay a reasonable production charge reflecting printing and other costs. 6. We are not able to offer an opinion either written or verbal on the content of these reports and this must be obtained from your legal representative. 7. Whilst we take care in preparing these reports, a buyer should ensure that his/her legal representative confirms as soon as possible all matters relating to title including the extent and boundaries of the property and other important matters before exchange of contracts.



0121 744 4595



shirley@shipways.co.uk



208 Stratford Road, Shirley, SOLIHULL, West Midlands, B90 3AG



shipways.co.uk