



Clare Close, Papworth Everard CAMBRIDGE  
**£350,000** Freehold

**Sharman  
Quinney**

# Key Features



- Three-Bedroom End-of-Terrace Home
- En-suite to Principal Bedroom
- Stylish Open-Plan Kitchen/Dining Space
- Sought-After Residential Location
- Garage and Parking

This beautifully presented three-bedroom end-of-terrace home offers well-balanced and thoughtfully designed accommodation, extending to approximately 1,041 sq ft, making it an ideal choice for families or professional tenants seeking both space and modern convenience.

Upon entering, a welcoming entrance hall provides access to a convenient ground floor cloakroom/WC. To the front of the property, a well-proportioned living room, offers an excellent space for relaxing and entertaining, benefitting from a pleasant dual aspect feel.

To the rear, the property boasts a generous kitchen/dining room, forming the true heart of the home. This impressive space offers ample room for both dining and everyday living, with direct



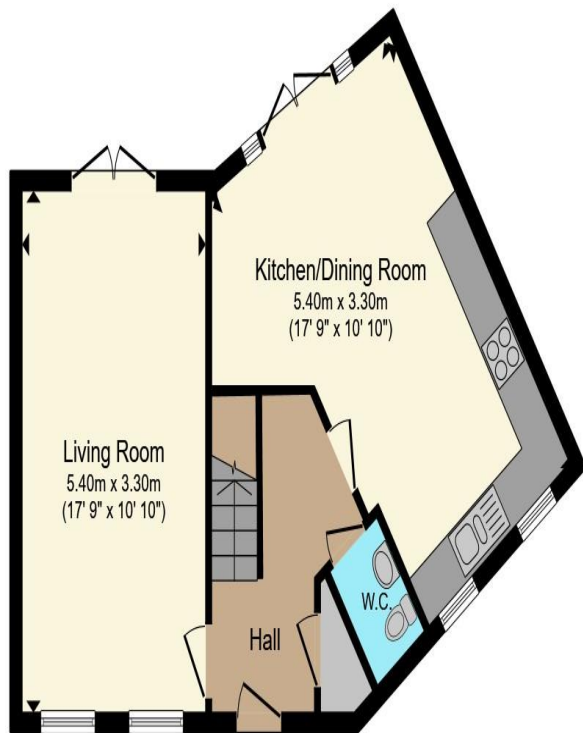
access to the garden, creating a practical and sociable layout ideal for modern lifestyles.

The first floor continues to impress with three bedrooms, including a spacious principal bedroom complete with a stylish en-suite shower room. Bedroom two is a particularly generous double, while bedroom three provides a perfect single bedroom, nursery or home office. A contemporary family bathroom serves the remaining rooms.

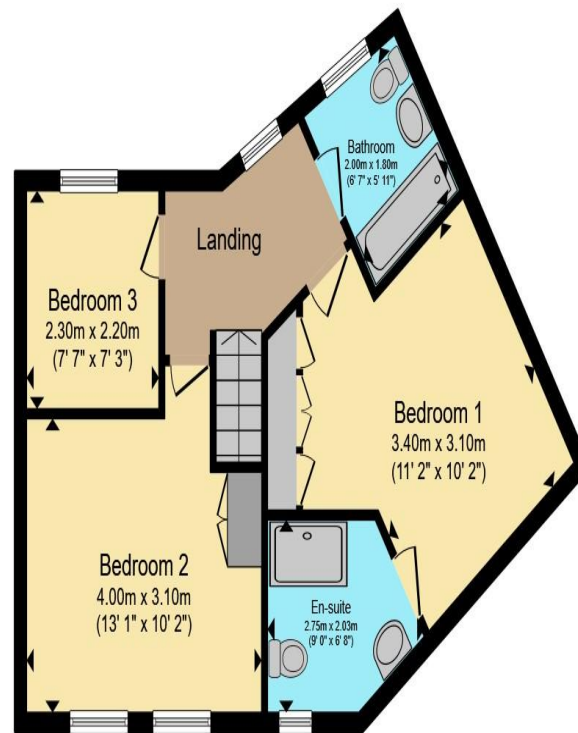
Externally, the property benefits from its end-of-terrace position, offering additional privacy, alongside a manageable rear garden ideal for outdoor dining and relaxation.

Combining a well-considered layout with generous room proportions and modern fittings throughout, this home presents a superb opportunity in a desirable and convenient residential location.





**Ground Floor**



**First Floor**

Total floor area 96.7 m<sup>2</sup> (1,041 sq.ft.) approx

This floor plan is for illustrative purposes only. It is not drawn to scale. Any measurements, floor areas (including any total floor area), openings and orientation are approximate. No details are guaranteed, they cannot be relied upon for any purpose and they do not form part of any agreement. No liability is taken for any error, omission or misstatement. A party must rely upon its own inspection(s). Powered by [www.propertybox.io](http://www.propertybox.io)

**Sharman  
Quinney**

To view this property call Sharman Quinney on:  
**01954 710620**

# Selling your property?

Contact us to arrange a **FREE** home valuation.

 01954 710620

 13 High Street, Cambourne, CAMBRIDGE,  
Cambridgeshire, CB23 6JX

 [cambourne@sharmanquinney.co.uk](mailto:cambourne@sharmanquinney.co.uk)

 [www.sharmanquinney.co.uk](http://www.sharmanquinney.co.uk)



 SCAN ME



Sharman Quinney Holdings Limited is registered in England and Wales under company number 4174227, Registered Office is Cumbria House, 16-20 Hockliffe Street, Leighton Buzzard, Bedfordshire, LU7 1GN. VAT Registration Number is 500 2481 05.

1: These particulars do not constitute part or all of an offer or contract. 2: The measurements indicated are supplied for guidance only and as such must be considered incorrect. 3: Potential buyers are advised to recheck the measurements before committing to any expense. 4: Sharman Quinney has not tested any apparatus, equipment, fixtures, fittings or services and it is the buyers interests to check the working condition of any appliances. 5: Sharman Quinney has not sought to verify the legal title of the property and buyers must obtain verification from their legal representative. 6: Intending purchasers will be asked to produce identification documentation at a later stage and we would ask your co-operation in order that there will be no delay in agreeing the sale. Ref: CSQ202792 - 0002

