



Connells

Queen Street  
Market Harborough



### Property Description

An Exceptional First-Time Buy or Downsizing Opportunity !

This beautifully extended and recently renovated two-bedroom semi-detached home is a hidden gem, perfectly positioned in the heart of Little Bowden and within walking distance of Market Harborough town centre. Finished to a high standard throughout, the property effortlessly combines original character with contemporary comfort.

### Entrance Hall

Bright and welcoming hallway with tiled floor, exposed brick feature wall and understairs storage cupboard.

### Kitchen/Living Room

The stunning open-plan kitchen and living space is the heart of the home. Skylight windows and patio doors flood the room with natural light and provide direct access to the courtyard garden. Under-floor heating add warmth and comfort, while air-conditioning with thermostat control ensures year-round usability.

The kitchen is beautifully fitted with a range of base and wall units topped with co-ordinating solid wood worktops, a stylish tiled splashback, Belfast sink and exposed wooden ceiling beams. Integrated appliances include a washing machine, tumble dryer, fridge freezer, built-in oven, induction hob and extractor fan.

The living area offers ample space for both seating and dining and features a striking wooden feature wall with built-in display shelving and storage units, creating a stylish yet practical layout.

### Bathroom

Accessed from the entrance hall, the

bathroom has been finished to an exceptional standard. Features include a terrazzo tiled floor, floor-to-ceiling contrasting splashback, countertop basin with wall-mounted vanity, bath with rainfall and mixer shower, folding shower screen, heated towel rail, brushed brass fittings, wooden ceiling beams and a useful linen cupboard.

### Bedroom 1

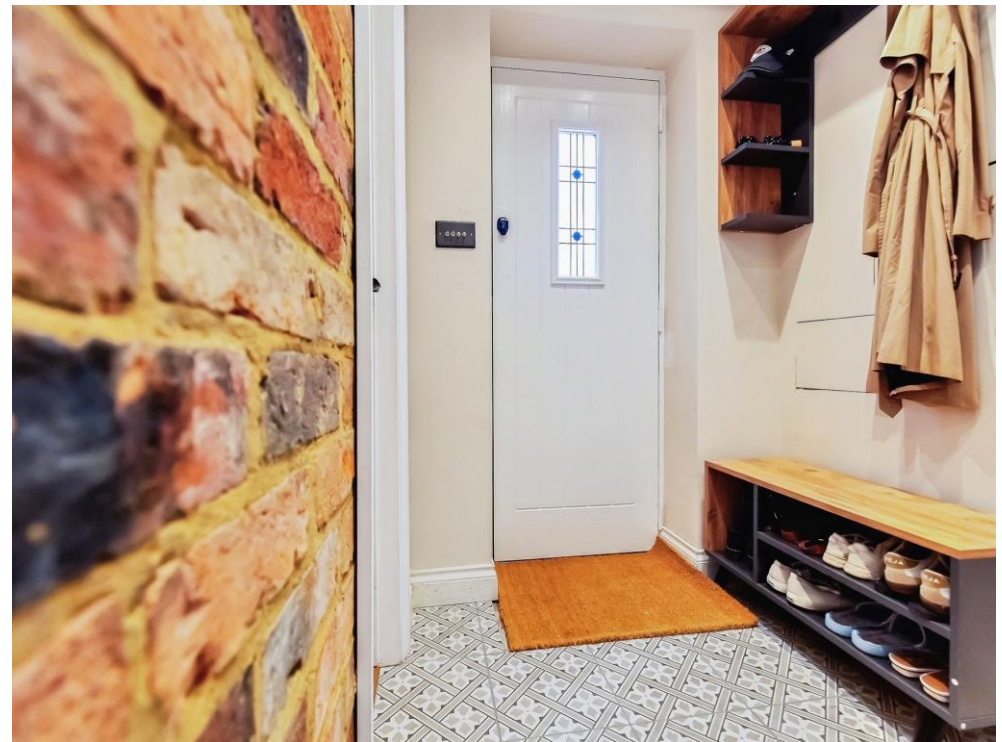
A well-proportioned double bedroom located at the front of the property, showcasing an original cast-iron fireplace.

### Bedroom 2

A single bedroom, complete with an access hatch to the loft.

### Outside

The property is approached via a charming courtyard garden laid with stone-effect flagstones. With access directly from the kitchen/living room, this private outdoor space is ideal for entertaining and relaxing on long summer evenings. On street parking.





To view this property please contact Connells on

**T 01858 465 921**

**E [marketharborough@connells.co.uk](mailto:marketharborough@connells.co.uk)**

11 St. Marys Road  
MARKET HARBOROUGH LE16 7DS

EPC Rating: D Council Tax  
Band: A

**view this property online [connells.co.uk/Property/MKH308331](https://connells.co.uk/Property/MKH308331)**

Tenure: Freehold



1. MONEY LAUNDERING REGULATIONS Intending purchasers will be asked to produce identification documentation at a later stage and we would ask for your co-operation in order that there will be no delay in agreeing the sale. 2. These particulars do not constitute part or all of an offer or contract. 3. The measurements indicated are supplied for guidance only and as such must be considered incorrect. Potential buyers are advised to recheck measurements before committing to any expense. 4. We have not tested any apparatus, equipment, fixtures, fittings or services and it is in the buyers interest to check the working condition of any appliances.

Connells Residential is registered in England and Wales under company number 1489613, Registered Office is Cumbria House, 16-20 Hockliffe Street, Leighton Buzzard, Bedfordshire, LU7 1GN. VAT Registration Number is 500 2481 05.

**See all our properties at [www.connells.co.uk](http://www.connells.co.uk) | [www.rightmove.co.uk](http://www.rightmove.co.uk) | [www.zoopla.co.uk](http://www.zoopla.co.uk)**

Property Ref: MKH308331 - 0008