



## Heath Place, E3

£529,999

 2  1  2  C

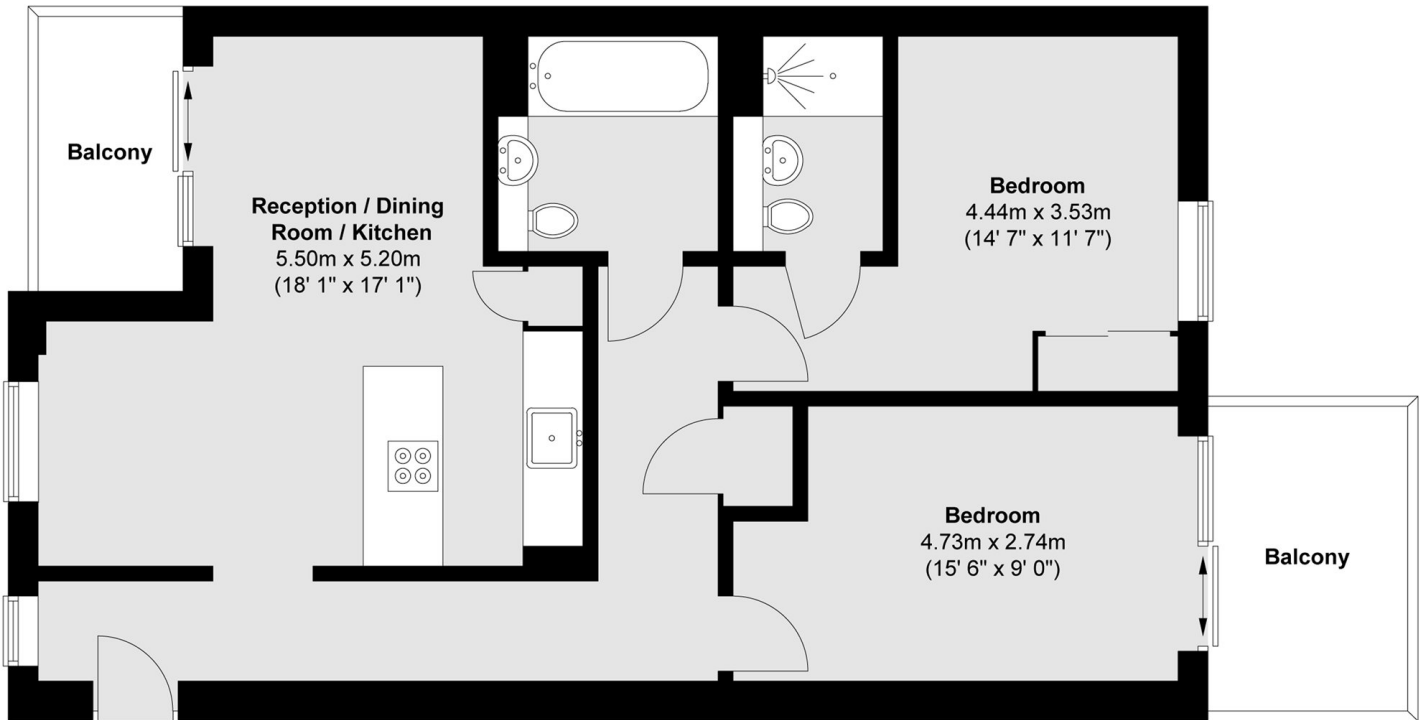
- Open Plan Reception
- Two Balconies
- Well Presented Throughout
- Two Double Bedrooms
- Two Bathrooms
- Communal Garden



We're delighted to offer this charming two bedroom two bathroom home in the sought after development, Fielder Apartments. Features to include two balconies, open plan reception room, wooden flooring throughout, communal garden and bike storage.

Mile End Station is just 0.1 miles from Fielder Apartments, offering excellent links around the City. Bow Road station is also just a short walk away.





Total area (approx.) : 69.6 sq. m (749 sq. ft)  
 Total balcony area (approx.) : 10.8 sq. m (116 sq. ft)

35A Wapping High Street,  
 London, E1W 1NR  
 020 7665 5589  
 ea2group.com



Energy Rating: C We aim to make our particulars both accurate and reliable. However they are not guaranteed; nor do they form part of an offer or contract. If you require clarification on any points then please contact us, especially if you're travelling some distance to view. Please note that appliances and heating systems have not been tested and therefore no warranties can be given as to their good working order.