

Colin Dean Residential

in partnership with Dexters



Shaftesbury Avenue, HA2

£1,700 pcm

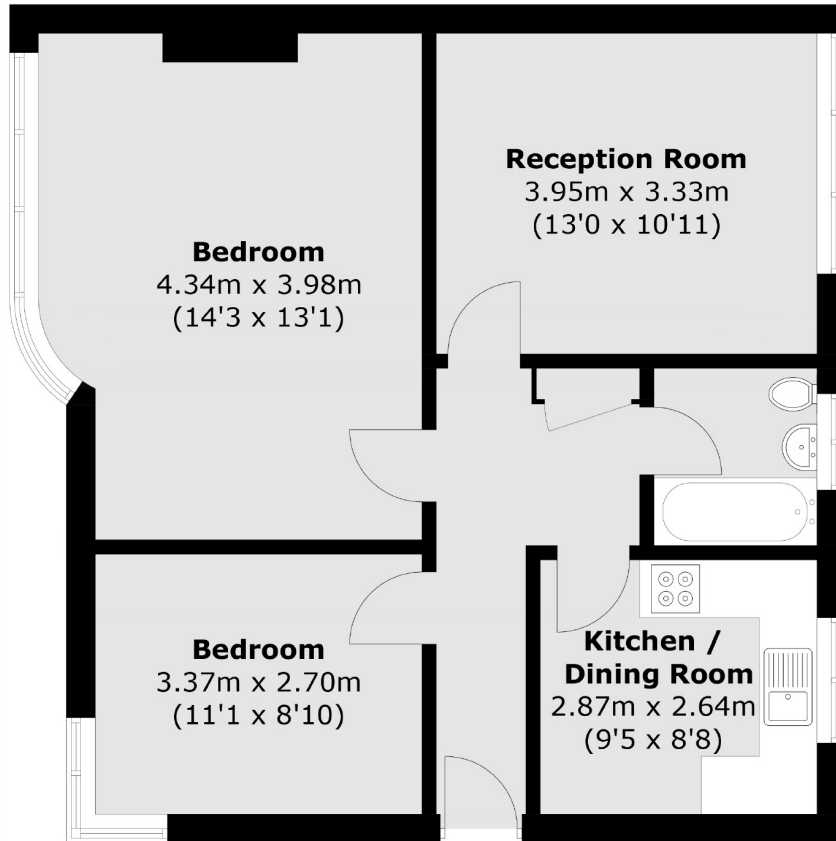
This spacious and contemporary two bedroom, first-floor maisonette is situated in a highly sought-after location. The property features a spacious reception room, perfect for relaxing or entertaining and a separate kitchen with integrated appliances. Ideal for a professional couple or small family in need of additional space. Energy Rating: C.

The property is situated on a residential road and has local shops, bus stops and popular schools nearby. Both Rayners Lane and South Harrow train stations are approximately a mile away.

- First Floor Maisonette • Two Double Bedrooms • Large Living Room •
- Separate Kitchen • Gas Central Heating • Unfurnished •

Colin Dean Residential

in partnership with Dexters



Total area (approx.): 62.9 sq. m (677.0 sq. ft)

Colin Dean Residential

350 Pinner Road,
Harrow, HA1 4LB

020 8515 7929

daniel.murray@colindean.com

Energy Rating: C We aim to make our particulars both accurate and reliable. However they are not guaranteed; nor do they form part of an offer or contract. If you require clarification on any points then please contact us, especially if you're travelling some distance to view. Please note that appliances and heating systems have not been tested and therefore no warranties can be given as to their good working order.