



High Road, NW10

£1,850 Per Month

AVAILABLE TO LET is this bright and spacious two bedroom Flat, set on the Top Floor within this well maintained block situated between Willesden Green and Dollis Hill.

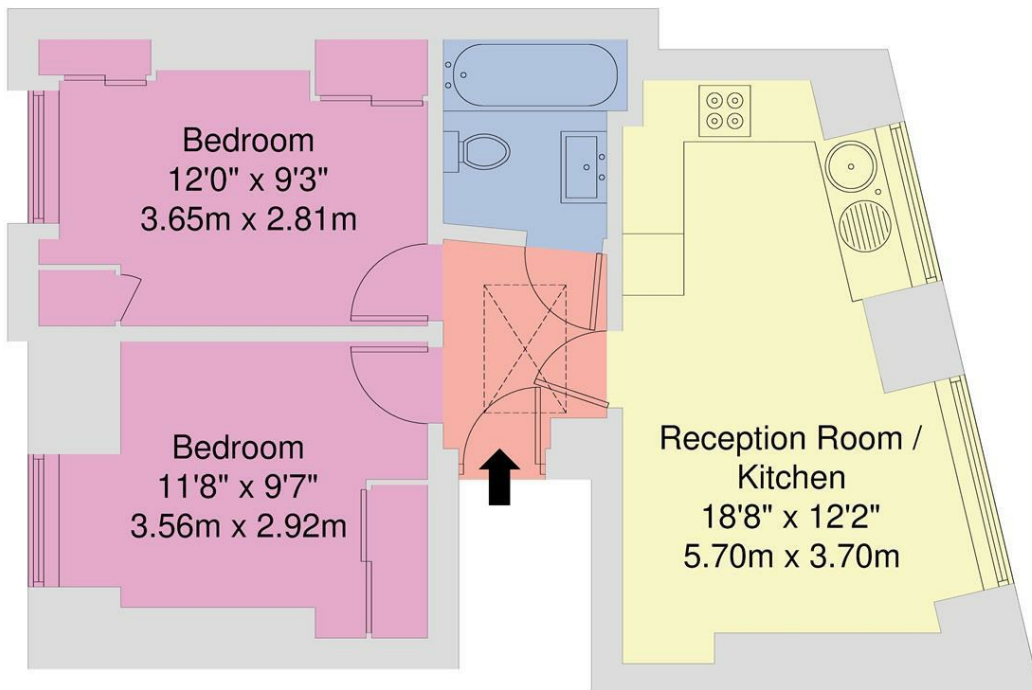
- AVAILABLE TO LET NOW
- Bright 2 bedroom, 1 bathroom Third Floor Flat
- Open plan modern kitchen/reception
- Within walking distance to local amenities
- Transport: Willesden Green (Jubilee-Zone 2)
- COUNCIL: Brent (B)
- Deposit: £2,134
- Viewing is highly recommended



020 8450 9377 - 020 8459 1133
rentals@cameronsstiff.co.uk



High Road, NW10
Approximate Area = 43.5 sq m / 468 sq ft
For Identification only - Not to Scale



THIRD FLOOR

Disclaimer : Floorplan measurements are approximate and are for illustrative purposes only. While we do not doubt the floorplan accuracy and completeness, you or your advisors should conduct a careful, independent investigation of the property in respect of monetary valuation.

EPC: D
Ref: 19772781

