



Connells

Davies Road
Longhedge Salisbury



Property Description

This one bedroom, top floor apartment in Longhedge, Salisbury. Benefiting from a balcony, allocated parking space, open plan living and a modern finish throughout. A fantastic opportunity to purchase in this established estate with access to Salisbury City centre and the A303.

Entrance Hall

Access to bedroom, bathroom and kitchen/living room and three storage cupboards.

Bedroom

15' 1" x 8' 11" (4.60m x 2.72m)

Side aspect.

Bathroom

Comprising a panel enclosed bath with mixer taps, shower head attachment and glass screen, pedestal wash hand basin with mixer taps and WC.

Kitchen/ Living

19' 8" x 10' 6" (5.99m x 3.20m)

Kitchen - Comprising wall and base units with worksurfaces over, drainer sink unit with mixer tap, inset hob unit with stainless steel hood over, integrated oven, space for washing machine and fridge/freezer, side aspect, open to.

Living Room - French doors to balcony.

Outside

Allocated Parking

One allocated parking space.

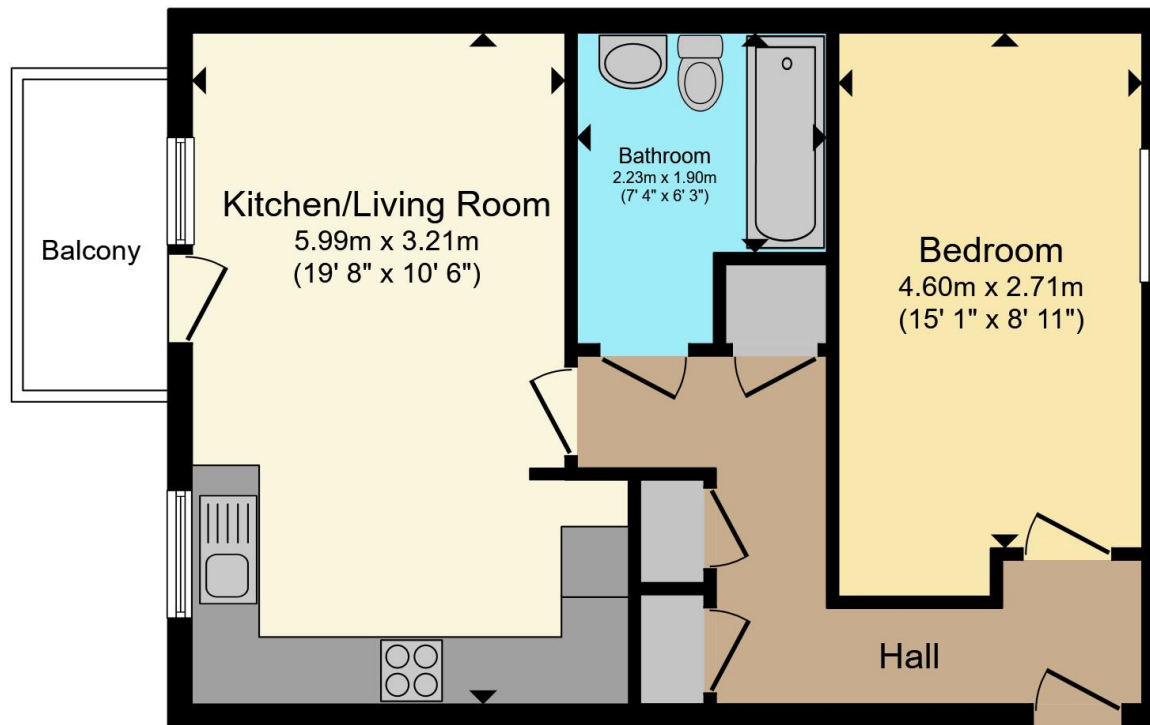
Agents Note

Sold as a 40% share with the current costs of
Rent: £288.40 pcm Service Charge: £90.54 pcm Building Insurance: £13.00 pcm Management: £12.00 pcm Total: £403.94 pcm









Total floor area 50.7 m² (546 sq.ft.) approx

This floor plan is for illustrative purposes only. It is not drawn to scale. Any measurements, floor areas (including any total floor area), openings and orientation are approximate. No details are guaranteed, they cannot be relied upon for any purpose and they do not form part of any agreement. No liability is taken for any error, omission or misstatement. A party must rely upon its own inspection(s). Powered by www.propertybox.io



To view this property please contact Connells on

T 01722 328 562
E salisbury@connells.co.uk

46-50 Castle Street
 Salisbury SP1 3TS

EPC Rating: B Council Tax
 Band: A

Service Charge:
 1086.46

Ground Rent:
 Ask Agent

Tenure: Leasehold

view this property online connells.co.uk/Property/SAL308479

This is a Leasehold property with details as follows; Term of Lease 125 years from 01 Feb 2017. Should you require further information please contact the branch. Please Note additional fees could be incurred for items such as



1. MONEY LAUNDERING REGULATIONS Intending purchasers will be asked to produce identification documentation at a later stage and we would ask for your co-operation in order that there will be no delay in agreeing the sale. 2. These particulars do not constitute part or all of an offer or contract. 3. The measurements indicated are supplied for guidance only and as such must be considered incorrect. Potential buyers are advised to recheck measurements before committing to any expense. 4. We have not tested any apparatus, equipment, fixtures, fittings or services and it is in the buyers interest to check the working condition of any appliances.

Connells Residential is registered in England and Wales under company number 1489613, Registered Office is Cumbria House, 16-20 Hockliffe Street, Leighton Buzzard, Bedfordshire, LU7 1GN. VAT Registration Number is 500 2481 05.

See all our properties at www.connells.co.uk | www.rightmove.co.uk | www.zoopla.co.uk

Property Ref: SAL308479 - 0003